

April 2017

Total traded volume on BSP Southpool for April 2017 exceeded 608 GWh

11% of all trades were closed on Intraday trading segment

- 42% of those on Intraday Continuous Trading Segment and
- 58% through Intraday Implicit Auctions MI2 & MI6 ([more info](#))

April Overall

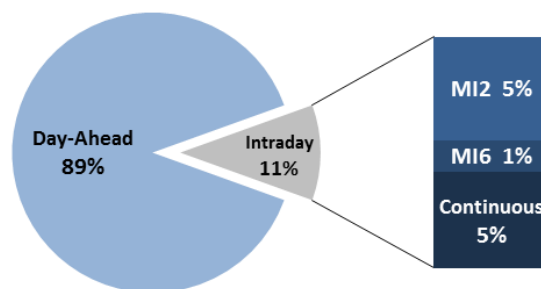
Day-Ahead

Volume (MWh)		Price (€/MWh)				
Total	541.945 ▼ 18,0%					
Avg. daily	18.065 ▼ 15,2%	Avg. Daily	Max. Daily	Min. Daily	Spec. Daily Volatility	
Max. daily	21.949 ▼ 34,2%	Base	50,71	20,93	9,3%	
Min. daily	11.615 ▼ 15,8%	Euro-Peak	40,31 ▼ 1,4%	55,21	22,76	12,2%

[Further Day-Ahead Auction Info.](#) (BSP website)

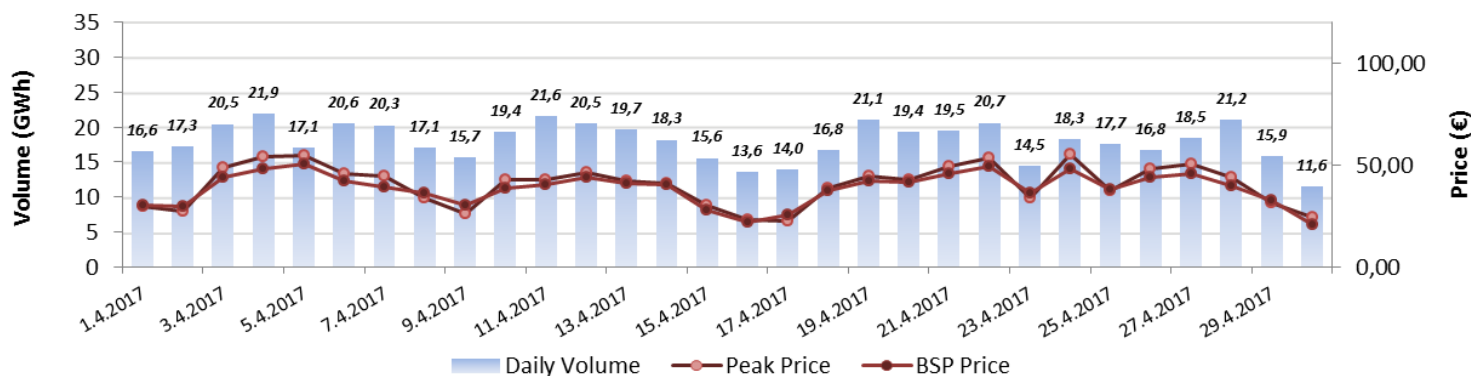
Intraday

	Volume (MWh)	Avg. Price (€/MWh)
MI2	29.853 ▲ 70,4%	35,77 ▲ 0,6%
MI6	9.325 ▲ 69,4%	38,14 ▲ 0,0%
Continuous	27.822 ▲ 5,9%	/

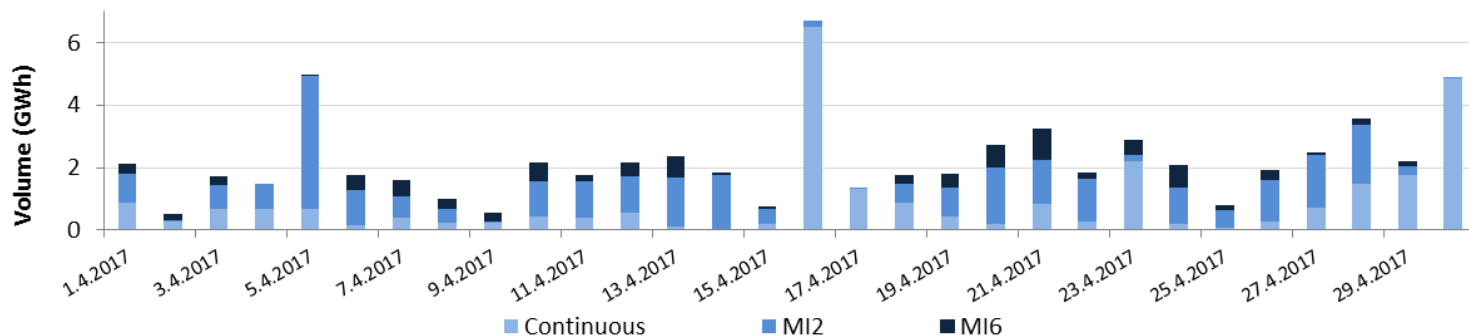


[Further Intraday Trading info.](#) (BSP website)

Day-Ahead Volumes and Prices



Intraday Daily Volumes



Day-Ahead Auction

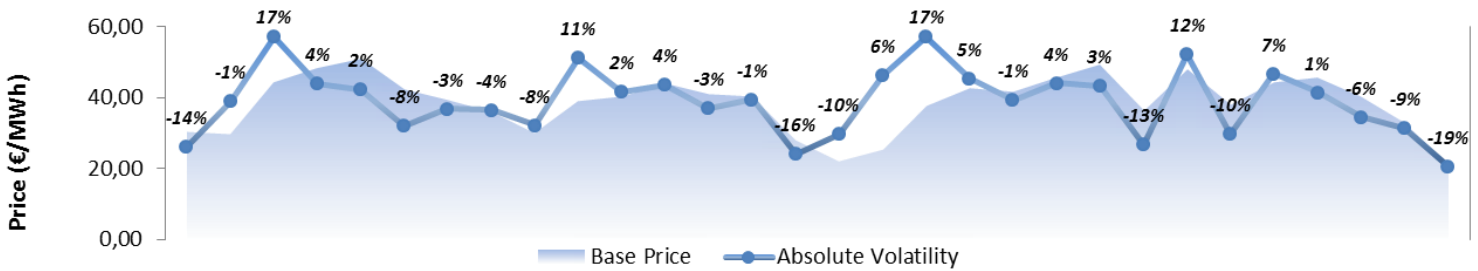
Average Hourly Prices

Hour (AM)	1	2	3	4	5	6	7	8	9	10	11	12
Volume (MWh)	688	677	690	692	670	678	686	728	780	796	748	804
Base price (€/MWh)	35,71	32,79	29,24	27,56	28,55	31,78	37,54	42,60	46,37	45,67	43,08	42,14
Hour (PM)	13	14	15	16	17	18	19	20	21	22	23	24
Volume (MWh)	882	875	800	746	689	681	721	855	857	827	764	732
Base price (€/MWh)	39,93	36,05	34,39	34,87	36,31	38,57	40,78	45,57	50,28	44,35	40,05	35,95

Cross-Zonal Capacities

	SI→IT	IT→SI	SI→AT	AT→SI	Total
Offered (MWh)	369.463	482.240	1.010.080	237.270	2.099.053
Allocated (MWh)	141.184	85.176	19.021	167.570	412.951
% Allocated	38,21%	17,66%	1,88%	70,62%	/

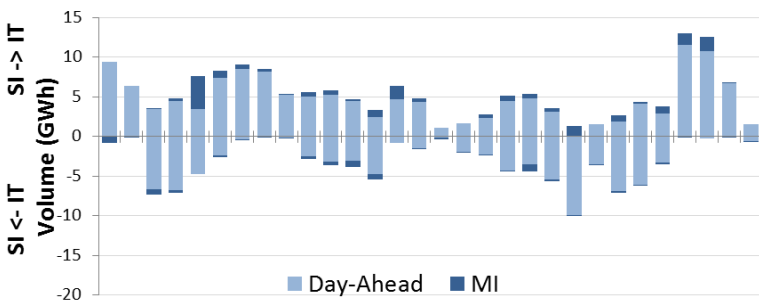
Daily Volatility of Base Price



[Methodology used for calculation of volatility.](#)

MI2 & MI6 Implicit Auctions

Allocated CZC Values on Slovenian-Italian Border

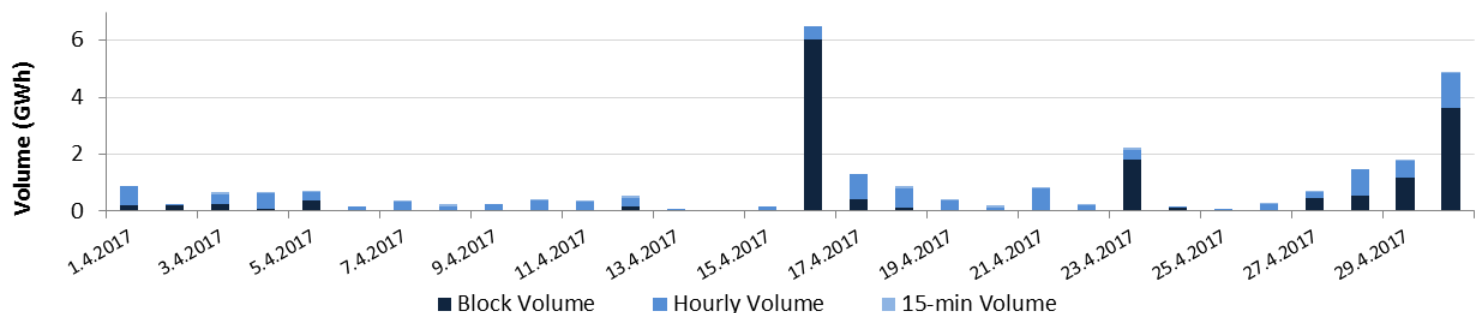


Cross-Zonal-Capacities

	SI-IT	IT-SI	Total
Offered (MWh)	298.403	339.448	637.851
Allocated (MWh)	19.541	6.964	26.505
% Allocated	6,55%	2,05%	/

Intraday Continuous Trading

Volumes by Products



Past 12 Months Trade Information

Day-Ahead Auction

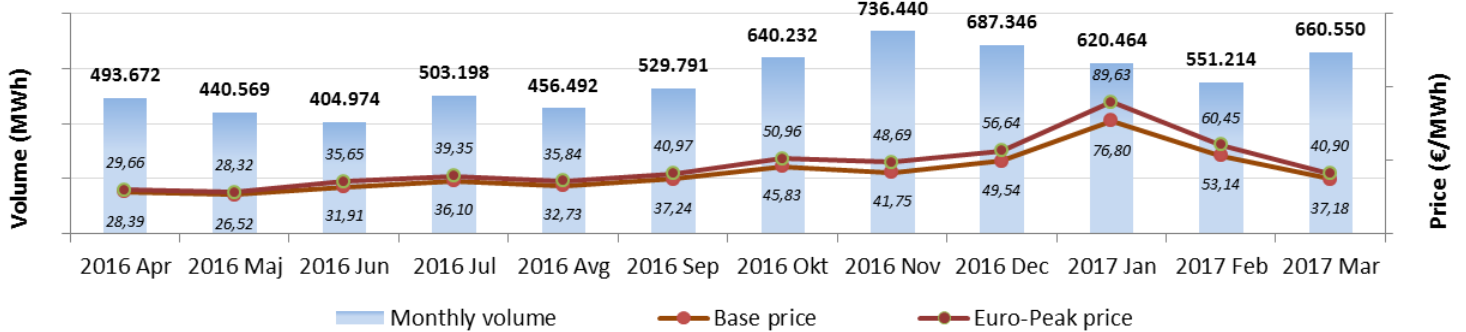
Intraday Continuous Trading

Avg. Monthly Volume (MWh)	560.412	Avg. Monthly volume (MWh)	24.906
Avg. Daily Volume (MWh)	18.411	Avg. Nbr. Of Transactions	404
Avg. Base Price (€/MWh)	41,43	MI2 & MI6 Implicit Auctions	
Avg. Euro-Peak Price (€/MWh)	46,42		
Avg. SI-IT offered (MWh)/Avg. % Allocated	404.788 / 67,9%	Avg. Monthly volume MI2 (MWh)	27.584
Avg. IT-SI offered (MWh)/Avg.% Allocated	473.765 / 8,5%	Avg. Monthly volume MI6 (MWh)	8.456
Avg. SI-AT offered (MWh)/Avg. % Allocated	941.747 / 3,7%	Avg. SI-IT offered (MWh)/Avg. % Allocated	157.711 / 7,1%
Avg. AT-SI offered (MWh)/Avg. % Allocated	224.584 / 60,9%	Avg. IT-SI offered (MWh)/Avg.% Allocated	387.651 / 2,8%

*Day-ahead coupling on SI-AT border was launched on 22nd July 2016. Therefore for average calculation, data from August is being used.

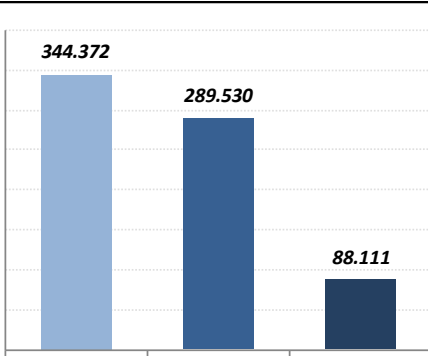
**Intraday coupling on SI-IT border was launched on 21st June 2016. Therefore for average calculation, data from July is being used.

Day-Ahead Market Volumes and Prices



Intraday Volumes (MWh)

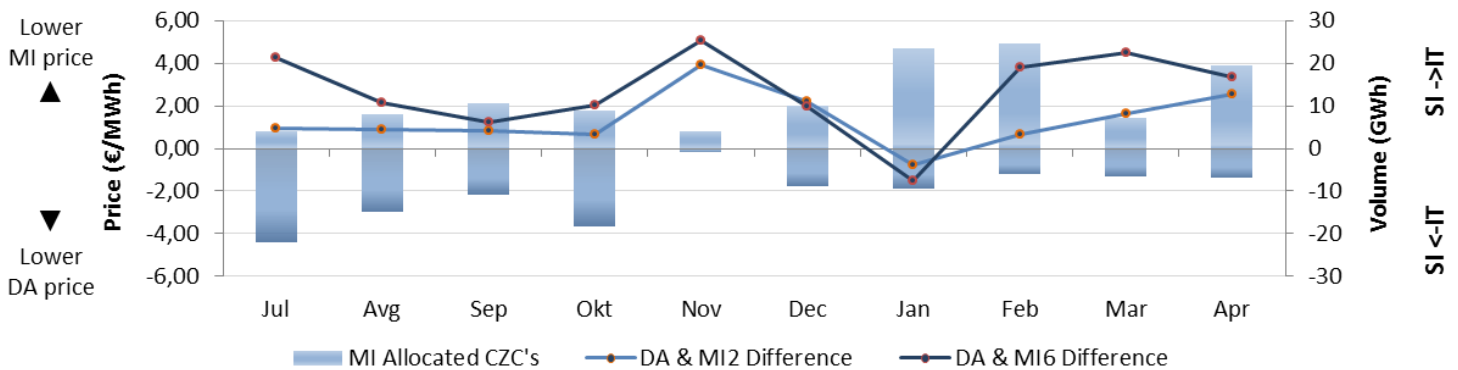
Total Volume from April 2016



	Continuous	MI2	MI6
Apr	53.887	*	*
Maj	29.850	*	*
Jun	29.045	11.418	2.679
Jul	13.309	33.515	5.582
Avg	31.659	29.657	8.309
Sep	9.212	27.861	10.493
Okt	17.377	34.984	9.566
Nov	16.342	8.964	1.444
Dec	12.541	23.301	9.464
Jan	40.356	37.490	13.914
Feb	19.024	34.970	11.829
Mar	26.133	17.516	5.505

*MI Auctions were launched on 22nd June 2016.

Absolute Difference Between MI and Day-Ahead Prices & MI Offered Cross-Zonal Capacities



*Cross-Zonal Capacities not allocated on Day-Ahead Auction are later offered for MI2 and MI6 Auctions.