

- Yearly trading volume exceeded 5 TWh on August 30th
- More than 600 GWh have been traded on Day-Ahead in August
- 18% rise in Y/Y trading volume

## August Overall

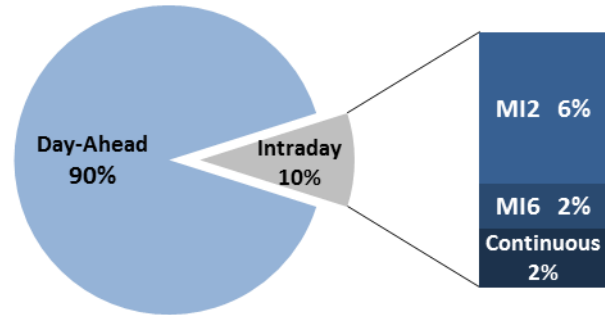
### Day-Ahead

Volume (MWh)		Price (€/MWh)			
Total	541.383 ▲ 5,4%	<b>Avg. Daily</b>	Max. Daily	Min. Daily	Spec. Daily Volatility
Avg. daily	17.464 ▲ 5,4%	Base	111,87	26,74	15,2%
Max. daily	22.271 ▲ 9,4%	Euro-Peak	66,58 ▲ 19,1%	35,15	19,5%
Min. daily	13.549 ▲ 9,9%				

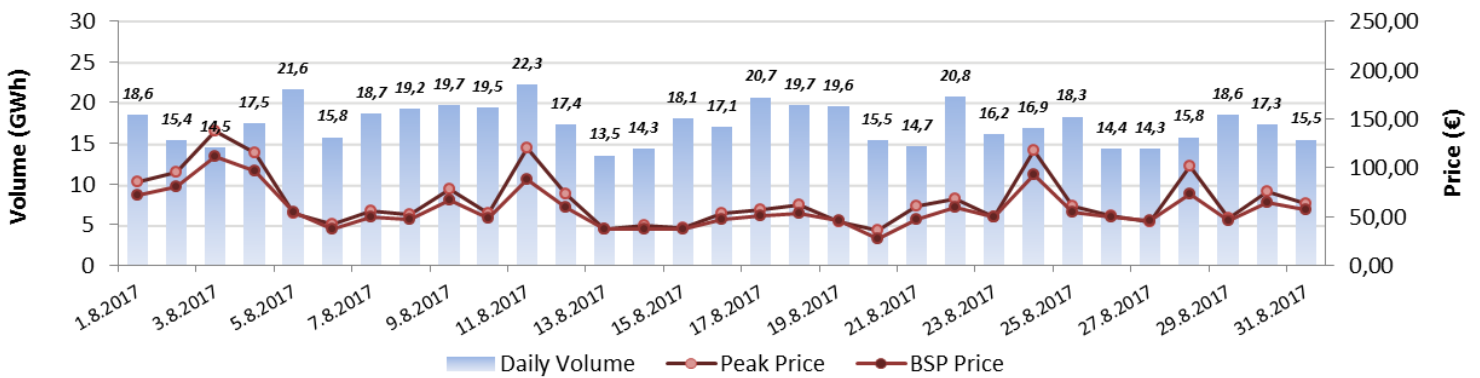
[Further Day-Ahead Auction Info.](#) (BSP website)

Intraday		
	Volume (MWh)	Avg. Price (€/MWh)
<b>MI2</b>	34.912 ▼ 23,9%	51,04 ▲ 2,4%
<b>MI6</b>	10.123 ▼ 10,2%	60,02 ▲ 18,5%
<b>Continuous</b>	13.612 ▼ 40,9%	/

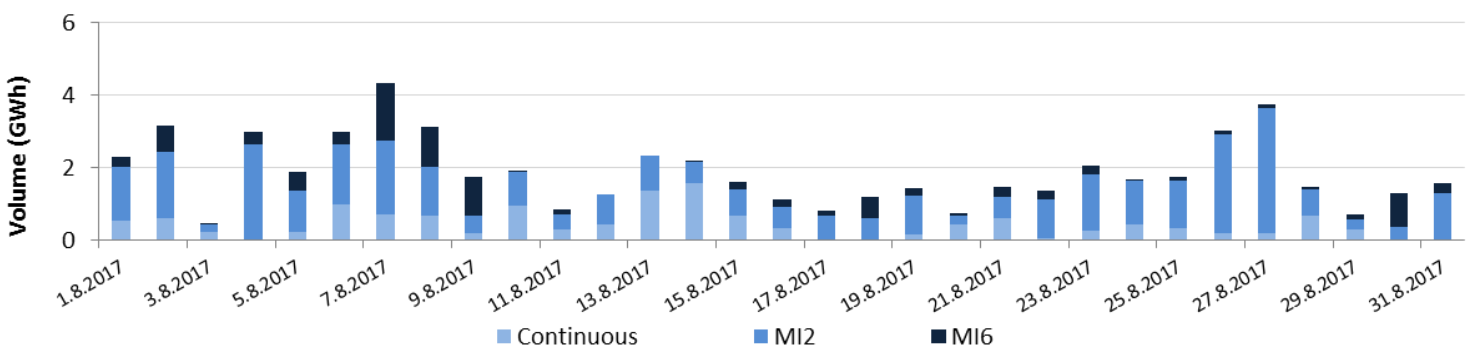
[Further Intraday Trading info.](#) (BSP website)



### Day-Ahead Volumes and Prices



### Intraday Daily Volumes



# Day-Ahead Auction

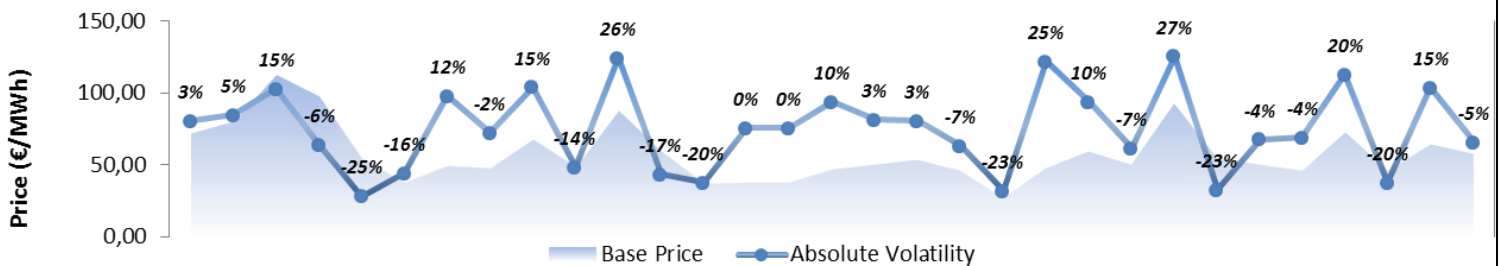
## Average Hourly Prices

Hour (AM)	1	2	3	4	5	6	7	8	9	10	11	12
Volume (MWh)	748	725	712	716	701	664	637	696	706	722	741	746
Base price (€/MWh)	44,28	39,53	36,07	34,56	36,03	37,18	43,50	55,56	61,80	63,77	62,78	66,23
Hour (PM)	13	14	15	16	17	18	19	20	21	22	23	24
Volume (MWh)	765	737	726	728	728	742	758	743	806	753	743	719
Base price (€/MWh)	66,75	66,02	69,38	68,76	66,97	66,97	68,42	71,16	78,78	67,92	56,24	50,19

## Cross-Zonal Capacities

	SI→IT	IT→SI	SI→AT	AT→SI	Total
Offered (MWh)	341.791	469.480	978.133	143.877	1.933.281
Allocated (MWh)	133.777	155.286	1.375	131.259	421.697
% Allocated	39,14%	33,08%	0,14%	91,23%	/

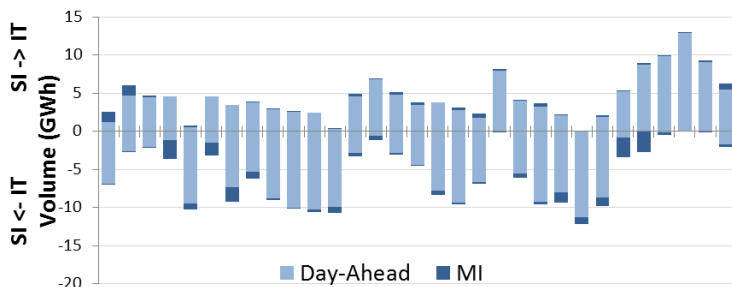
## Daily Volatility of Base Price



[Methodology used for calculation of volatility.](#)

# MI2 & MI6 Implicit Auctions

## Allocated CZC Values on Slovenian-Italian Border



## Cross-Zonal-Capacities

	SI-IT	IT-SI	Total
Offered (MWh)	356.026	265.386	621.412
Allocated (MWh)	7.556	21.980	29.536
% Allocated	2,12%	8,28%	/

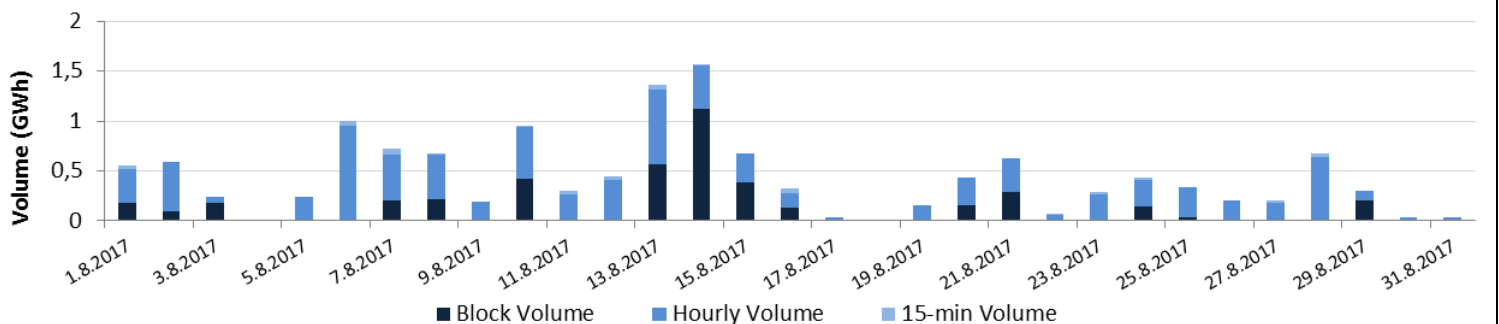


Read more about European Pilot Project

[Implicit Intraday Auctions \(MI2 & MI6\)](#)

# Intraday Continuous Trading

## Volumes by Products



# Past 12 Months Trade Information

## Day-Ahead Auction

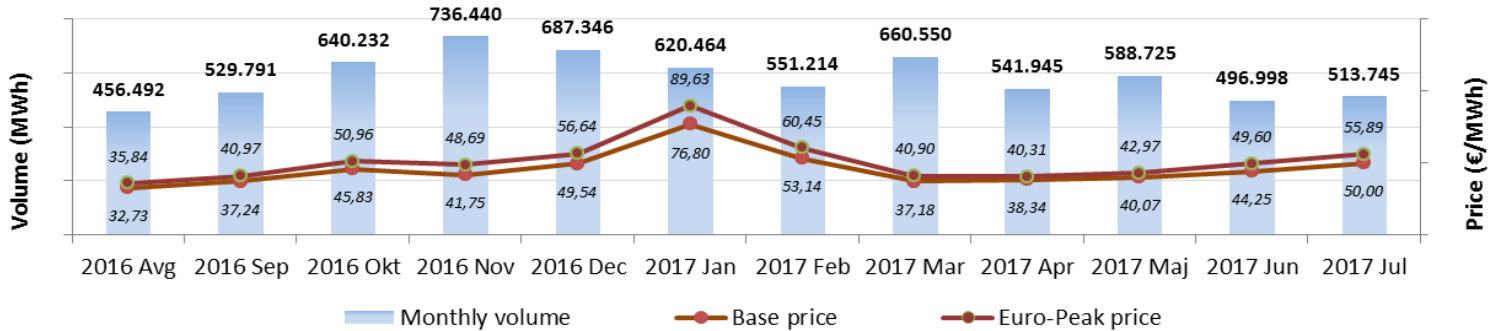
## Intraday Continuous Trading

Avg. Monthly Volume (MWh)	585.328	Avg. Monthly volume (MWh)	21.366
Avg. Daily Volume (MWh)	19.244	Avg. Nbr. Of Transactions	419
Avg. Base Price (€/MWh)	45,57	<b>MI2 &amp; MI6 Implicit Auctions</b>	
Avg. Euro-Peak Price (€/MWh)	51,07		
Avg. SI-IT offered (MWh)/Avg. % Allocated	397.482 / 61,7%	Avg. Monthly volume MI2 (MWh)	30.529
Avg. IT-SI offered (MWh)/Avg.% Allocated	474.373 / 13,0%	Avg. Monthly volume MI6 (MWh)	8.938
Avg. SI-AT offered (MWh)/Avg. % Allocated	973.278 / 2,6%	Avg. SI-IT offered (MWh)/Avg. % Allocated	212.720 / 6,9%
Avg. AT-SI offered (MWh)/Avg. % Allocated	209.176 / 67,0%	Avg. IT-SI offered (MWh)/Avg.% Allocated	347.305 / 3,0%

\*Day-ahead coupling on SI-AT border was launched on 22<sup>nd</sup> July 2016. Therefore for average calculation, data from August is being used.

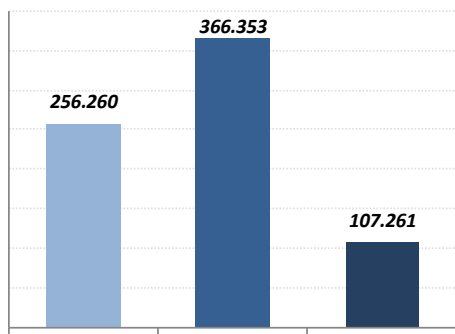
\*\*Intraday coupling on SI-IT border was launched on 21<sup>st</sup> June 2016. Therefore for average calculation, data from July is being used.

## Day-Ahead Market Volumes and Prices



## Intraday Volumes (MWh)

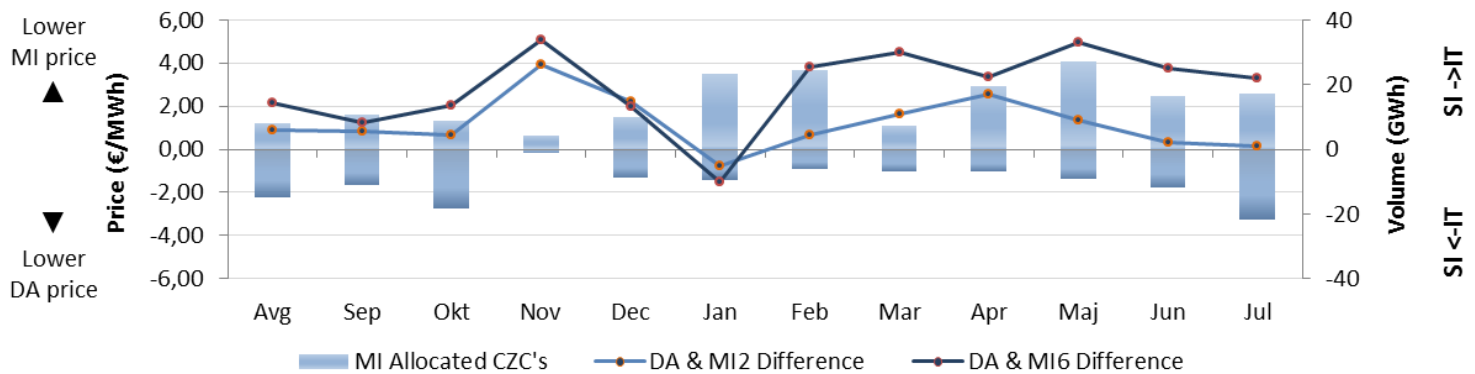
### Total Volume in past 12 months



	Continuous	MI2	MI6
Avg	31.659	29.657	8.309
Sep	9.212	27.861	10.493
Okt	17.377	34.984	9.566
Nov	16.342	8.964	1.444
Dec	12.541	23.301	9.464
Jan	40.356	37.490	13.914
Feb	19.024	34.970	11.829
Mar	26.133	17.516	5.505
Apr	27.822	29.853	9.325
Maj	19.354	41.953	5.891
Jun	13.404	33.927	10.241
Jul	23.037	45.876	11.279


\*MI Auctions were launched on 22<sup>nd</sup> June 2016.


## Absolute Difference Between MI and Day-Ahead Prices & MI Offered Cross-Zonal Capacities




\*Cross-Zonal Capacities not allocated on Day-Ahead Auction are later offered for MI2 and MI6 Auctions.

**BSP Energy Exchange LL C**  
**Dunajska 156**  
**SI-1000 Ljubljana**  
**Slovenija**

 **+386 1 620 76 76**

 **+386 1 620 76 77**

 **[www.bsp-southpool.com](http://www.bsp-southpool.com)**

 **[info@bsp-southpool.com](mailto:info@bsp-southpool.com)**

