

February 2017

Trading Volume for February 2017 reached 617 GWh

Members from 14 different countries now trade via BSP

February Overall

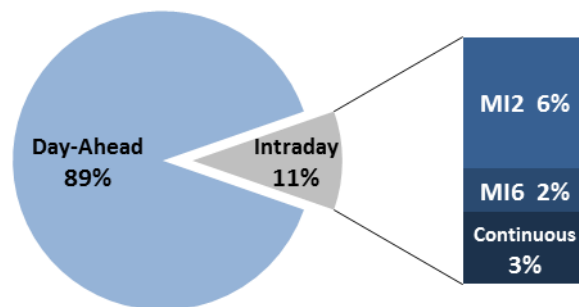
Day-Ahead

Volume (MWh)		Price (€/MWh)			
Total	551.214 ▼ 11,2%				
Avg. daily	19.686 ▼ 1,6%	Avg. Daily	Max. Daily	Min. Daily	Spec. Daily Volatility
Max. daily	24.361 ▼ 5,7%	Base	89,43	26,51	11,2%
Min. daily	15.535 ▲ 3,9%	Euro-Peak	60,45 ▼ 32,6%	112,10	18,78
					15,9%

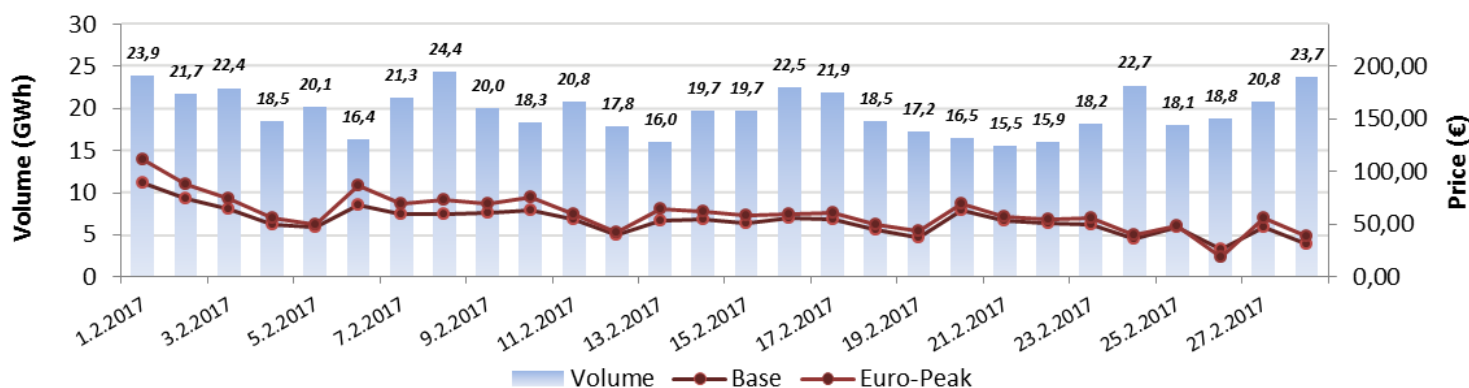
[Further Day-Ahead Auction Info.](#) (BSP website)

Intraday		
	Volume (MWh)	Avg. Price (€/MWh)
MI2	34.970 ▼ 6,7%	52,47 ▼ 32,4%
MI6	11.829 ▼ 15,0%	55,10 ▼ 36,0%
Continuous	19.024 ▼ 112,1%	/

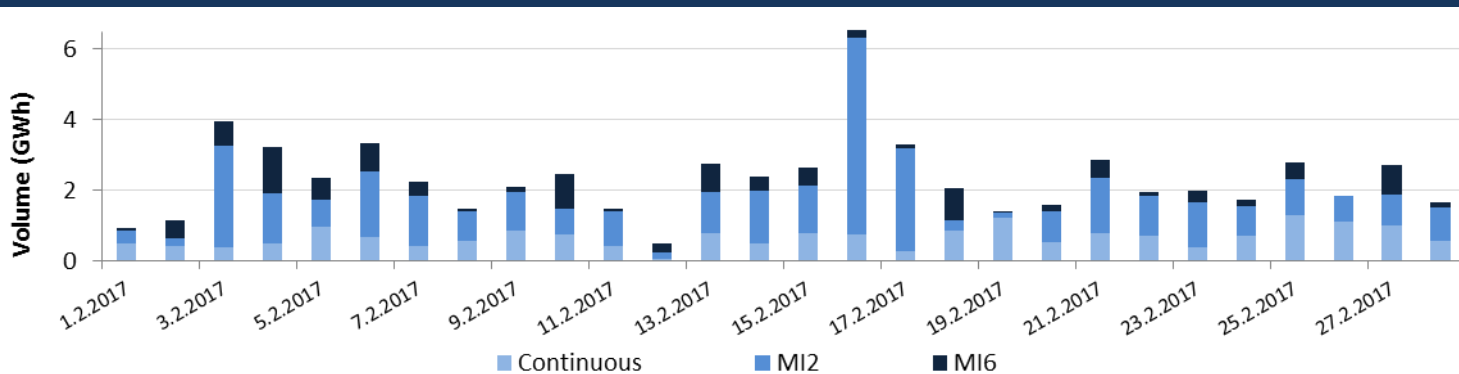
[Further Intraday Trading info.](#) (BSP website)



Day-Ahead Volumes and Prices



Intraday Daily Volumes



Day-Ahead Auction

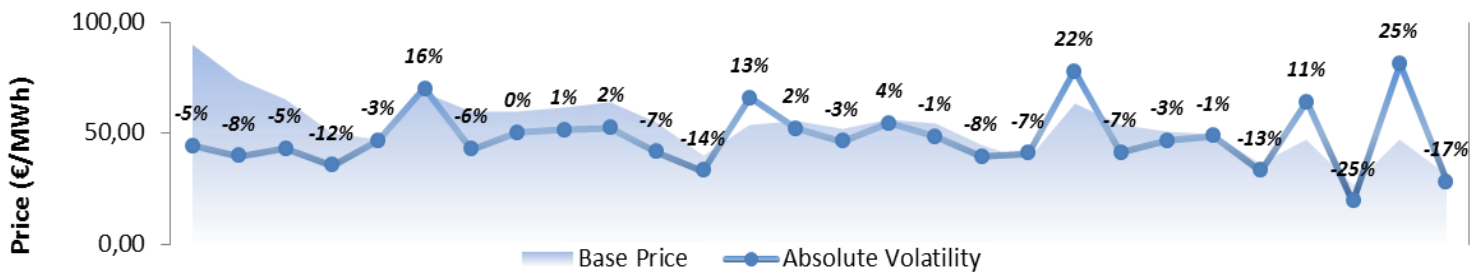
Average Hourly Prices

Hour (AM)	1	2	3	4	5	6	7	8	9	10	11	12
Volume (MWh)	735	728	775	810	779	752	834	868	910	871	831	810
Base price (€/MWh)	42,36	40,48	37,96	34,33	34,48	41,01	48,65	58,17	63,66	62,63	61,04	61,51
Hour (PM)	13	14	15	16	17	18	19	20	21	22	23	24
Volume (MWh)	810	777	806	863	873	844	886	897	805	788	810	824
Base price (€/MWh)	56,92	53,76	53,21	53,84	57,79	62,62	69,52	68,91	61,99	55,71	51,57	43,22

Cross-Zonal Capacities

	SI→IT	IT→SI	SI→AT	AT→SI	Total
Offered (MWh)	480.898	449.280	961.536	198.714	2.090.428
Allocated (MWh)	261.914	51.593	8.633	162.460	484.600
% Allocated	54,46%	11,48%	0,90%	81,76%	/

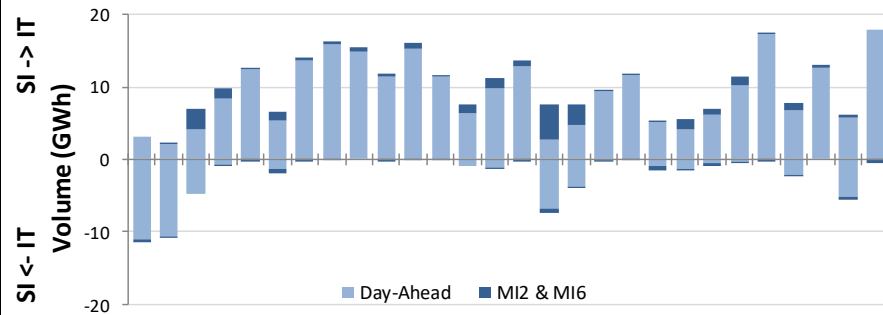
Daily Volatility of Base Price



[Methodology used for calculation of volatility.](#)

MI2 & MI6 Implicit Auctions

Allocated CZC Values on Slovenian-Italian Border

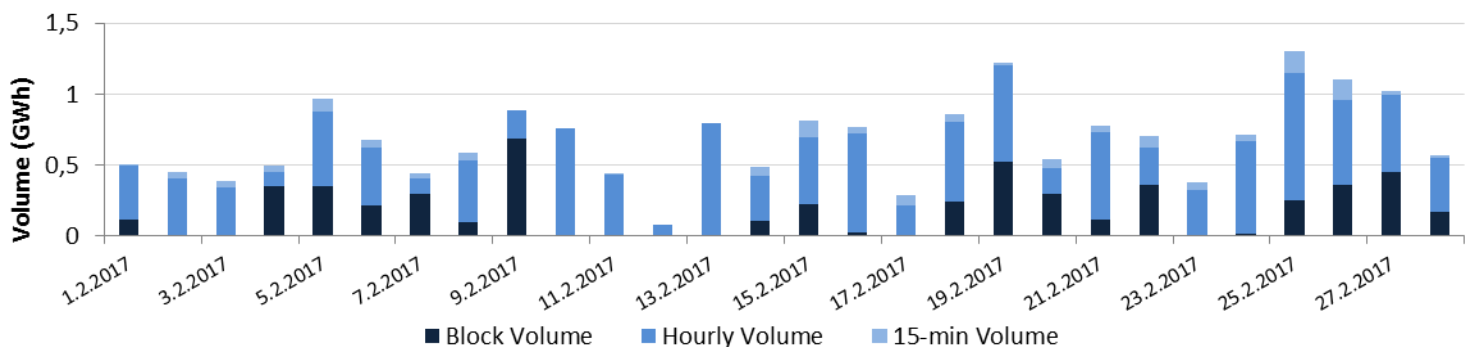


Cross-Zonal-Capacities

	SI-IT	IT-SI	Total
Offered (MWh)	270.577	326.768	597.345
Allocated (MWh)	24.630	5.990	30.620
% Allocated	9,10%	1,83%	

Intraday Continuous Trading

Volumes by Products



For informational purposes only.

Past 12 Months Trade Information

Day-Ahead Auction

Avg. Monthly Volume (MWh)	555.306
Avg. Daily Volume (MWh)	18.207
Avg. Base Price (€/MWh)	38,36
Avg. Euro-Peak Price (€/MWh)	43,10

Intraday Continuous Trading

Avg. Monthly volume (MWh)	24.305
Avg. Nbr. Of Transactions	386

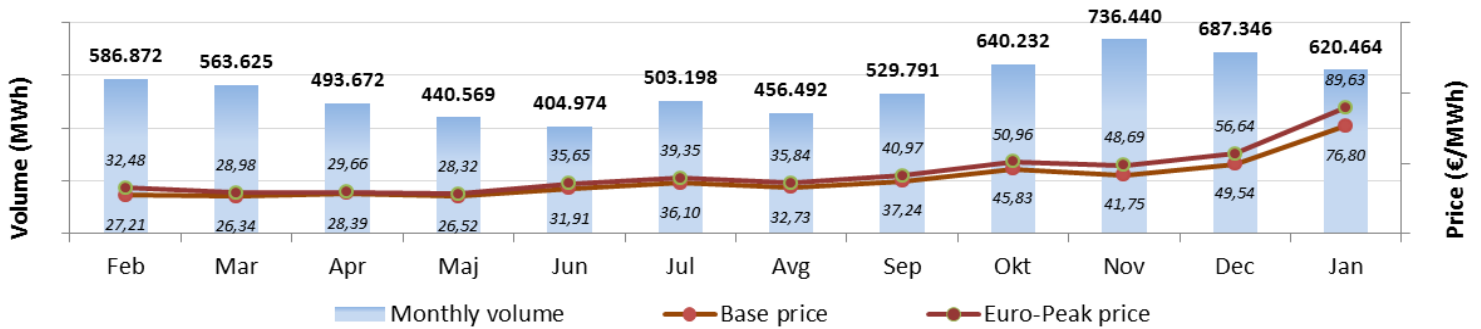
MI2 & MI6 Implicit Auctions

Avg. SI-IT offered (MWh)/Avg. % Allocated	400.347 / 73,1%	Avg. Monthly volume MI2 (MWh)	27.967
Avg. IT-SI offered (MWh)/Avg.% Allocated	475.125 / 7,2%	Avg. Monthly volume MI6 (MWh)	8.396
Avg. SI-AT offered (MWh)/Avg. % Allocated	924.918 / 4,0%	Avg. SI-IT offered (MWh)/Avg. % Allocated	148.170 / 6,7%
Avg. AT-SI offered (MWh)/Avg. % Allocated	218.041 / 58,9%	Avg. IT-SI offered (MWh)/Avg.% Allocated	385.767 / 3,2%

*Day-ahead coupling on SI-AT border was launched on 22nd July 2016. Therefore for average calculation, data from August is being used.

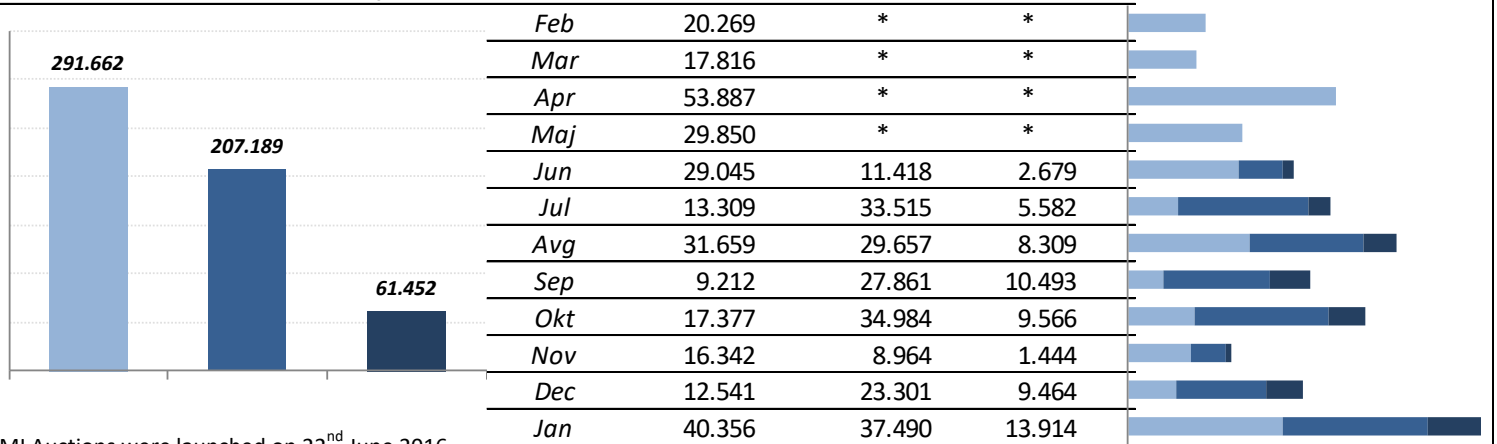
**Intraday coupling on SI-IT border was launched on 21st June 2016. Therefore for average calculation, data from July is being used.

Day-Ahead Market Volumes and Prices



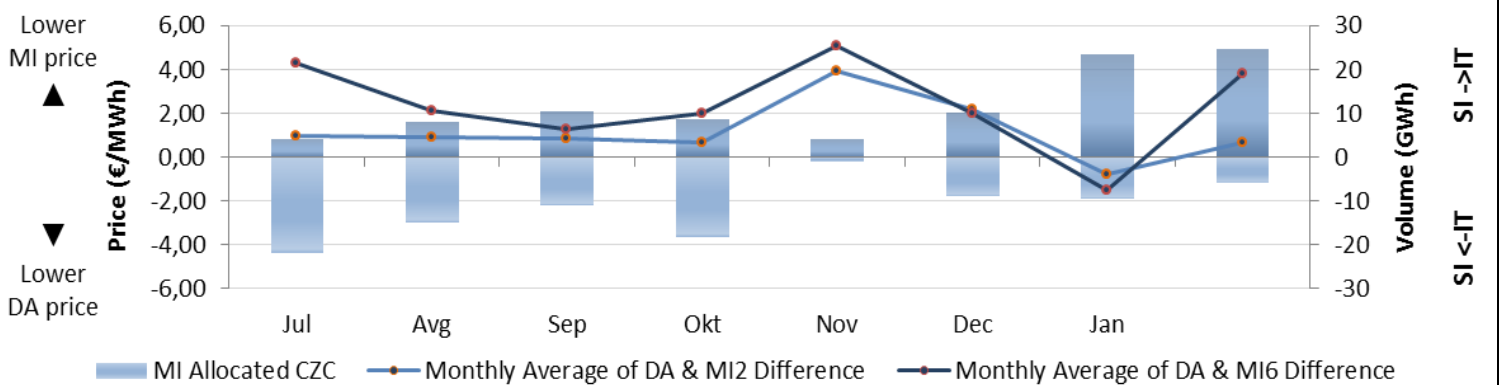
Intraday Volumes (MWh)

Total Volume from February 2016



*MI Auctions were launched on 22nd June 2016.

Absolute Difference Between MI and Day-Ahead Prices & MI Offered Cross-Zonal Capacities



*Cross-Zonal Capacities not allocated on Day-Ahead Auction are later offered for MI2 and MI6 Auctions.