

January 2017

🌐 Record start on all trading segments for BSP in 2017

🌐 More than 7 TWh traded in 2016 – 12,4% annual rise

January Overall

Day-Ahead

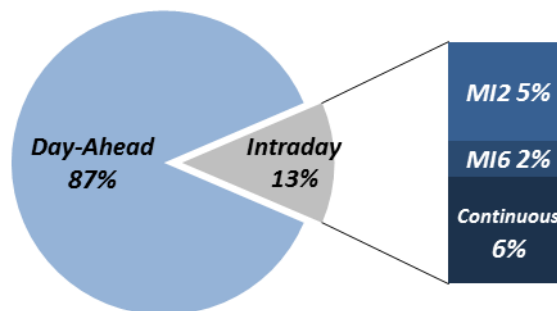
Volume (MWh)	
Total	620.464 ▼ 9,7%
Avg. daily	20.015 ▼ 9,7%
Max. daily	25.831 ▼ 4,4%
Min. daily	14.948 ▼ 14,8%

Price (€/MWh)				
	Avg. Daily	Max. Daily	Min. Daily	Spec. Daily Volatility
Base	76,80 ▲ 55,0%	114,25	44,35	9,4%
Euro-Peak	89,63 ▲ 58,3%	144,48	46,19	11,6%

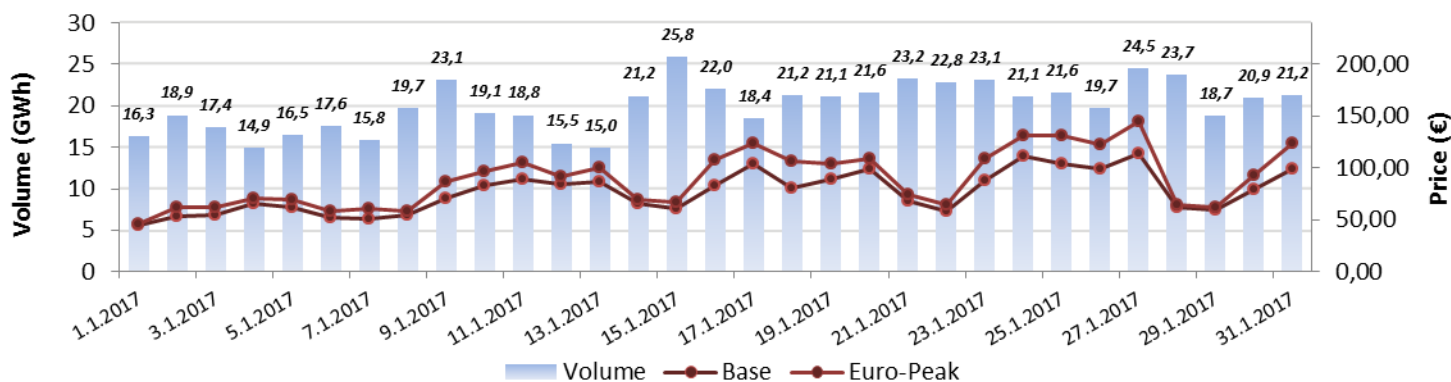
[Further Day-Ahead Auction Info.](#) (BSP website)

Intraday		
	Volume (MWh)	Avg. Price (€/MWh)
MI2	37.490 ▲ 60,9%	77,57 ▲ 63,8%
MI6	13.914 ▲ 47,0%	86,07 ▲ 63,9%
Continuous	40.356 ▲ 221,6%	/

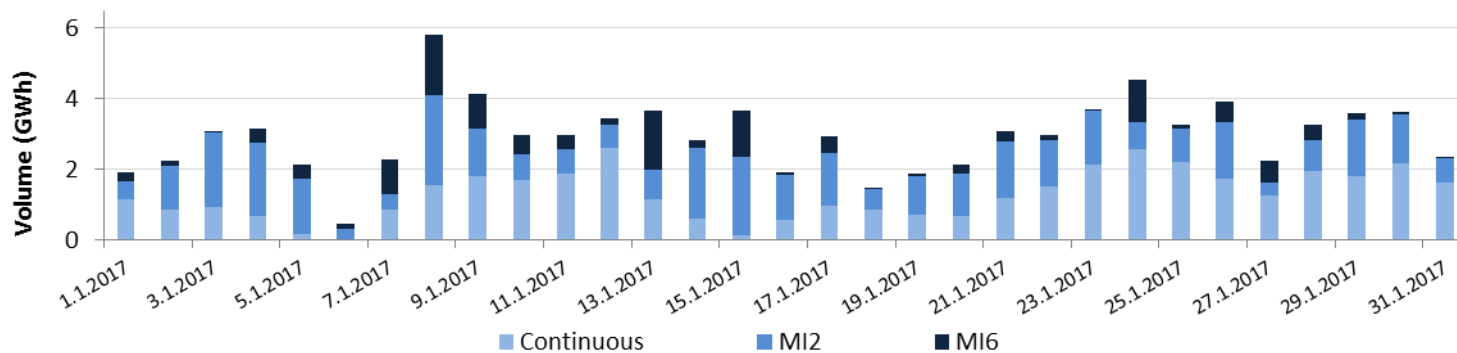
[Further Intraday Trading info.](#) (BSP website)



Day-Ahead Volumes and Prices



Intraday Daily Volumes



Day-Ahead Auction

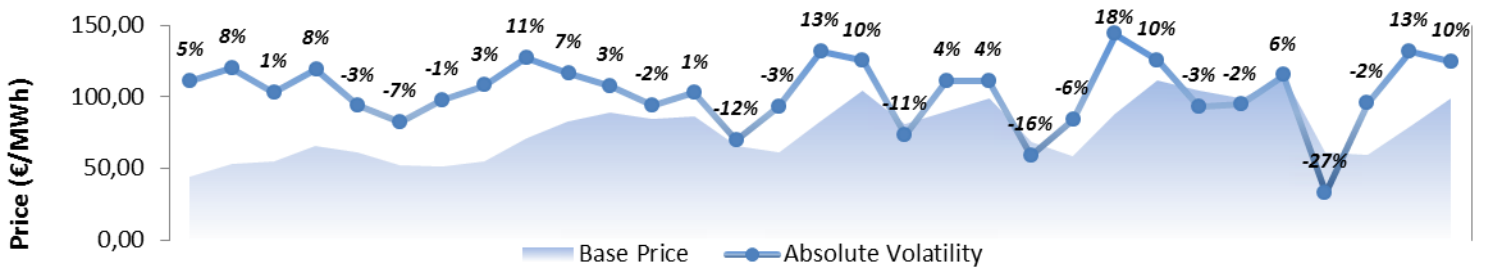
Average Hourly Prices

Hour (AM)	1	2	3	4	5	6	7	8	9	10	11	12
Volume (MWh)	776	746	746	772	767	751	782	819	895	899	862	868
Base price (€/MWh)	58,36	56,66	50,26	47,38	47,69	53,07	67,71	86,66	91,51	93,60	93,71	90,95
Hour (PM)	13	14	15	16	17	18	19	20	21	22	23	24
Volume (MWh)	897	870	874	877	901	890	918	876	843	806	774	805
Base price (€/MWh)	84,61	81,10	79,86	83,94	85,43	95,74	100,39	94,71	87,08	75,39	72,20	65,31

Cross-Zonal Capacities

	SI→IT	IT→SI	SI→AT	AT→SI	Total
Offered (MWh)	483.892	492.996	1.070.292	229.858	2.277.038
Allocated (MWh)	175.736	128.262	4.404	206.984	515.386
% Allocated	36,32%	26,02%	0,41%	90,05%	/

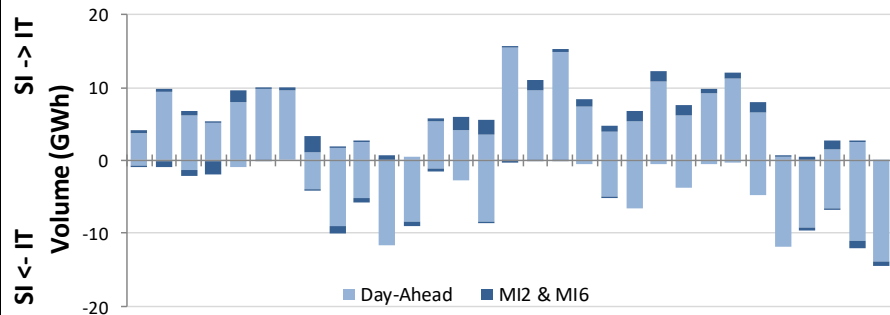
Daily Volatility of Base Price



[Methodology used for calculation of volatility.](#)

MI2 & MI6 Implicit Auctions

Allocated CZC Values on Slovenian-Italian Border

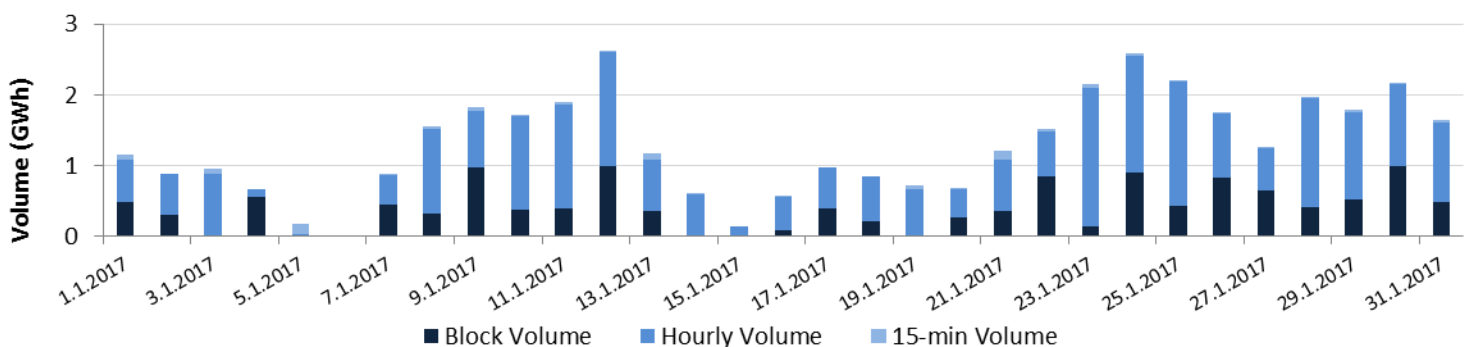


Cross-Zonal-Capacities

	SI-IT	IT-SI	Total
Offered (MWh)	436.421	278.324	714.745
Allocated (MWh)	23.460	9.404	32.863
% Allocated	5,38%	3,38%	

Intraday Continuous Trading

Volumes by Products



For informational purposes only.

Past 12 Months Trade Information

Day-Ahead Auction

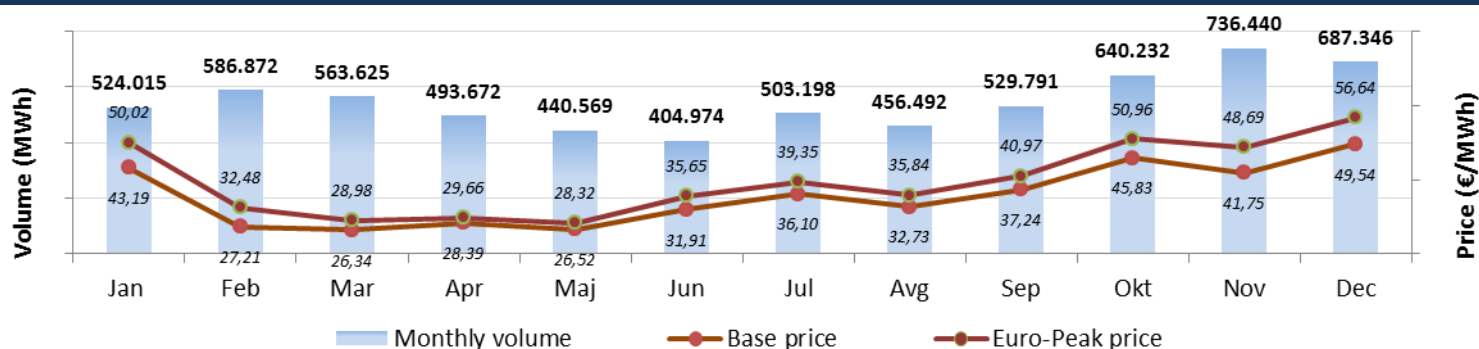
Intraday Continuous Trading

Avg. Monthly Volume (MWh)	547.269	Avg. Monthly volume (MWh)	22.668
Avg. Daily Volume (MWh)	17.943	Avg. Nbr. Of Transactions	362
Avg. Base Price (€/MWh)	35,56	MI2 & MI6 Implicit Auctions	
Avg. Euro-Peak Price (€/MWh)	39,80		
Avg. SI-IT offered (MWh)/Avg. % Allocated	400.050 / 75,7%	Avg. Monthly volume MI2 (MWh)	26.380
Avg. IT-SI offered (MWh)/Avg. % Allocated	475.562 / 5,5%	Avg. Monthly volume MI6 (MWh)	7.476
Avg. SI-AT offered (MWh)/Avg. % Allocated	895.843 / 4,8%	Avg. SI-IT offered (MWh)/Avg. % Allocated	100.128 / 7,6%
Avg. AT-SI offered (MWh)/Avg. % Allocated	215.677 / 52,2%	Avg. IT-SI offered (MWh)/Avg. % Allocated	403.675 / 3,1%

*Day-ahead coupling on SI-AT border was launched on 22nd July 2016. Therefore for average calculation, data from August is being used.

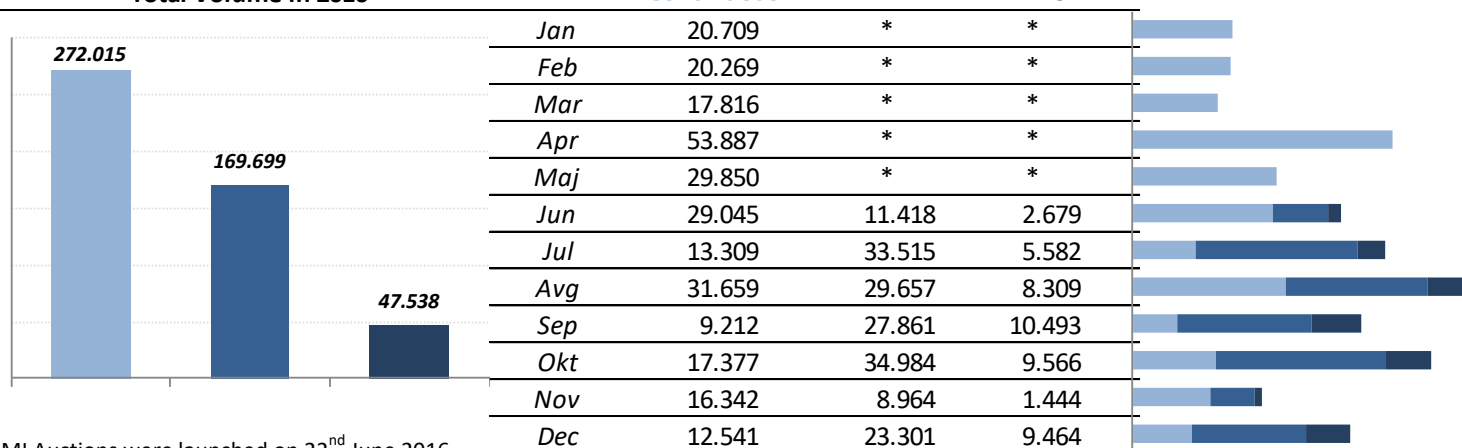
**Intraday coupling on SI-IT border was launched on 21st June 2016. Therefore for average calculation, data from July is being used.

Day-Ahead Market Volumes and Prices



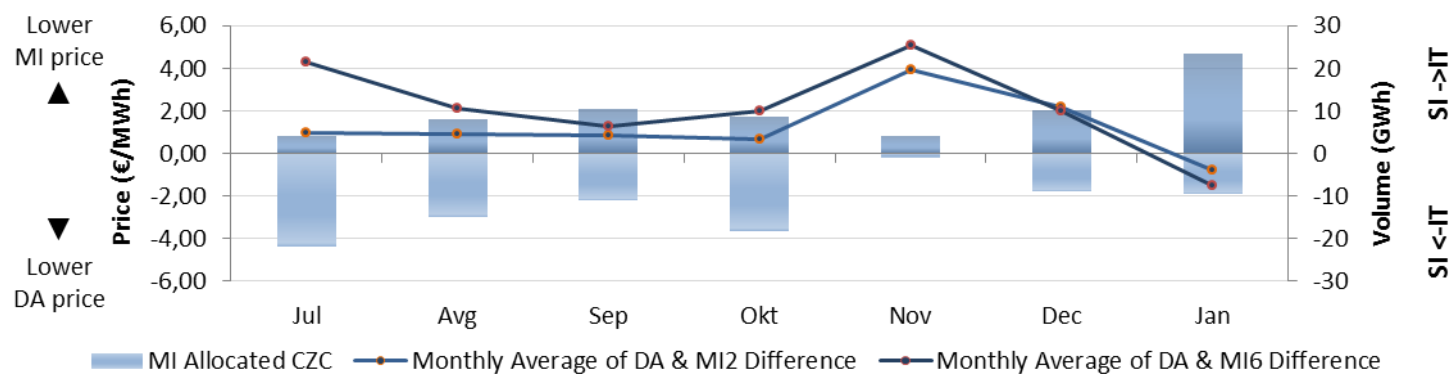
Intraday Volumes (MWh)

Total Volume in 2016 *



*MI Auctions were launched on 22nd June 2016.

Absolute Difference Between MI and Day-Ahead Prices & MI Offered Cross-Zonal Capacities



*Cross-Zonal Capacities not allocated on Day-Ahead Auction are later offered for MI2 and MI6 Auctions.