

- Record trading month on [MI Auctions](#) – 57 GWh
- Total trading volume for July reached 594 GWh
- A 19% Y/Y increase in trading volume for the first 7 months

## July Overall

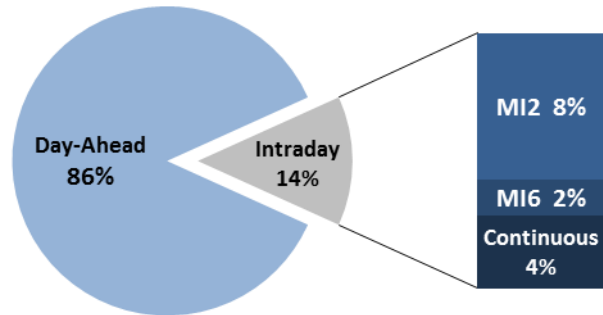
### Day-Ahead

Volume (MWh)		Price (€/MWh)				
Total	513.745 ▲ 3,4%					
Avg. daily	16.572 ▲ 0,0%	<b>Avg. Daily</b>	Max. Daily	Min. Daily	Spec. Daily Volatility	
Max. daily	20.356 ▼ 11,8%	Base	50,00 ▲ 13,0%	66,79	31,67	7,7%
Min. daily	12.323 ▲ 0,0%	Euro-Peak	55,89 ▲ 12,7%	83,49	32,96	11,6%

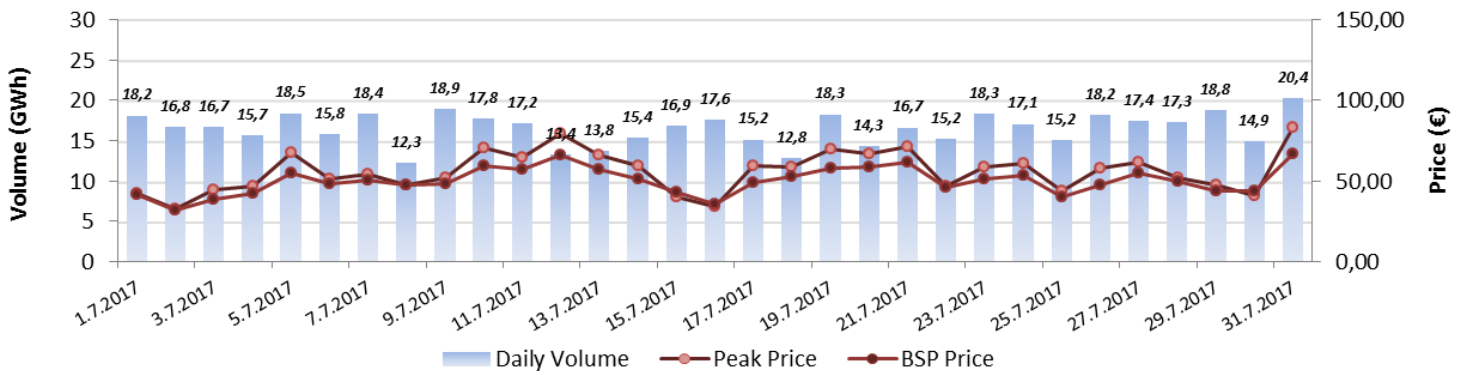
[Further Day-Ahead Auction Info.](#) (BSP website)

Intraday		
	Volume (MWh)	Avg. Price (€/MWh)
<b>MI2</b>	45.876 ▲ 35,2%	49,84 ▲ 13,5%
<b>MI6</b>	11.279 ▲ 10,1%	50,64 ▲ 12,7%
<b>Continuous</b>	23.037 ▲ 71,9%	/

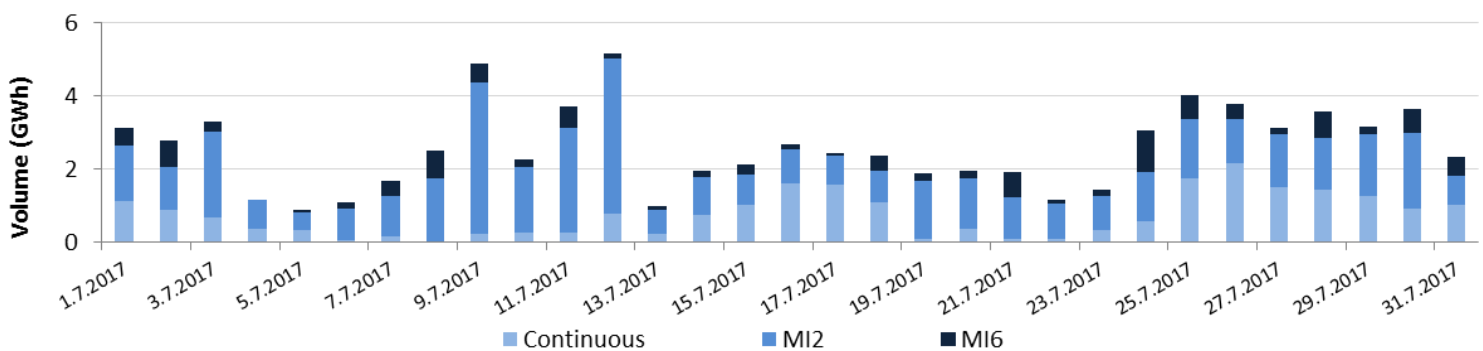
[Further Intraday Trading info.](#) (BSP website)



### Day-Ahead Volumes and Prices



### Intraday Daily Volumes



# Day-Ahead Auction

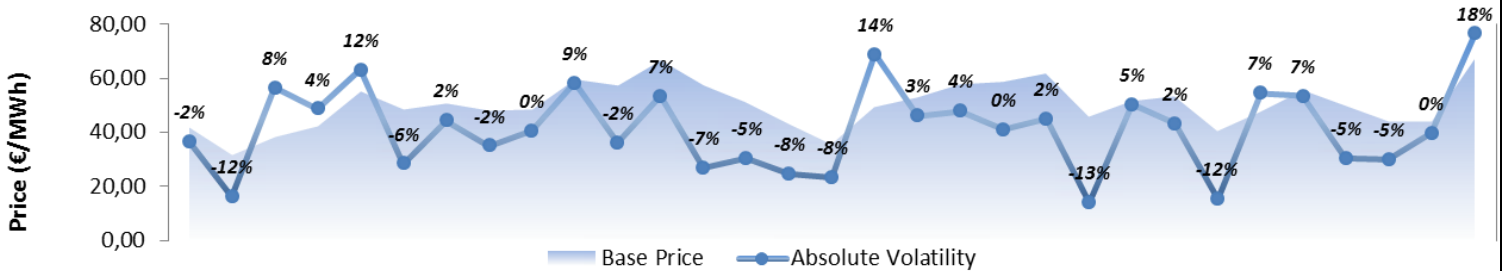
## Average Hourly Prices

Hour (AM)	1	2	3	4	5	6	7	8	9	10	11	12
Volume (MWh)	641	630	640	634	616	642	610	621	675	731	726	749
Base price (€/MWh)	44,13	40,46	36,72	34,81	35,05	36,79	42,21	49,49	54,73	56,64	55,50	56,55
Hour (PM)	13	14	15	16	17	18	19	20	21	22	23	24
Volume (MWh)	786	766	766	765	753	724	691	702	695	706	702	599
Base price (€/MWh)	56,00	55,89	56,44	57,30	56,29	54,95	54,57	55,78	56,18	57,02	50,60	45,89

## Cross-Zonal Capacities

	SI→IT	IT→SI	SI→AT	AT→SI	Total
Offered (MWh)	359.273	469.480	996.308	115.592	1.940.653
Allocated (MWh)	114.770	150.896	1.203	106.912	373.781
% Allocated	31,95%	32,14%	0,12%	92,49%	/

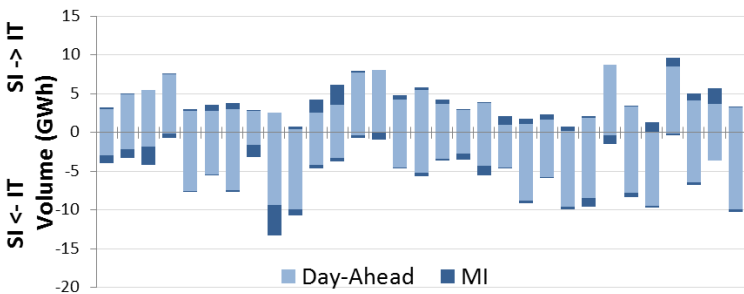
## Daily Volatility of Base Price



[Methodology used for calculation of volatility.](#)

# MI2 & MI6 Implicit Auctions

## Allocated CZC Values on Slovenian-Italian Border



## Cross-Zonal-Capacities

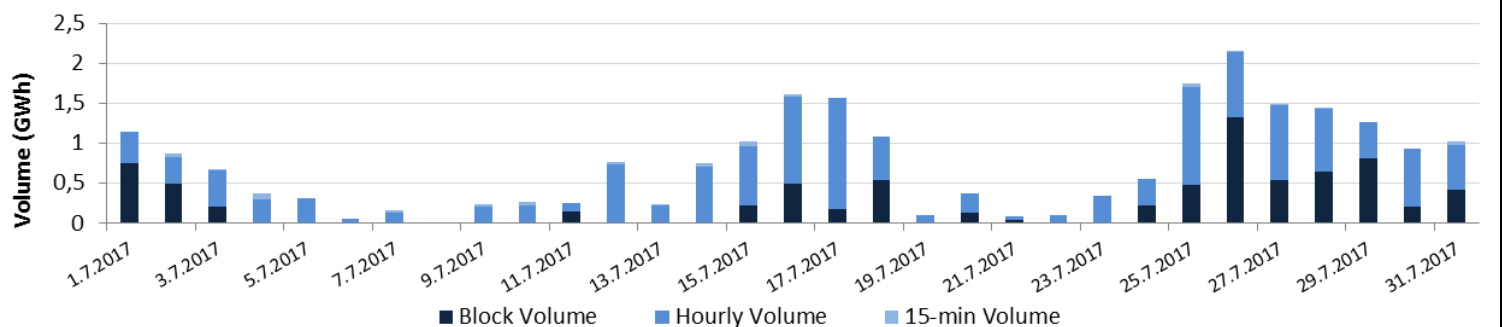
	SI-IT	IT-SI	Total
Offered (MWh)	395.398	251.794	647.192
Allocated (MWh)	17.279	21.790	39.069
% Allocated	4,37%	8,65%	/



Read more about European Pilot Project [Implicit Intraday Auctions \(MI2 & MI6\)](#)

# Intraday Continuous Trading

## Volumes by Products



# Past 12 Months Trade Information

## Day-Ahead Auction

Avg. Monthly Volume (MWh)	584.450
Avg. Daily Volume (MWh)	19.215
Avg. Base Price (€/MWh)	44,41
Avg. Euro-Peak Price (€/MWh)	49,69

## Intraday Continuous Trading

Avg. Monthly volume (MWh)	20.556
Avg. Nbr. Of Transactions	405

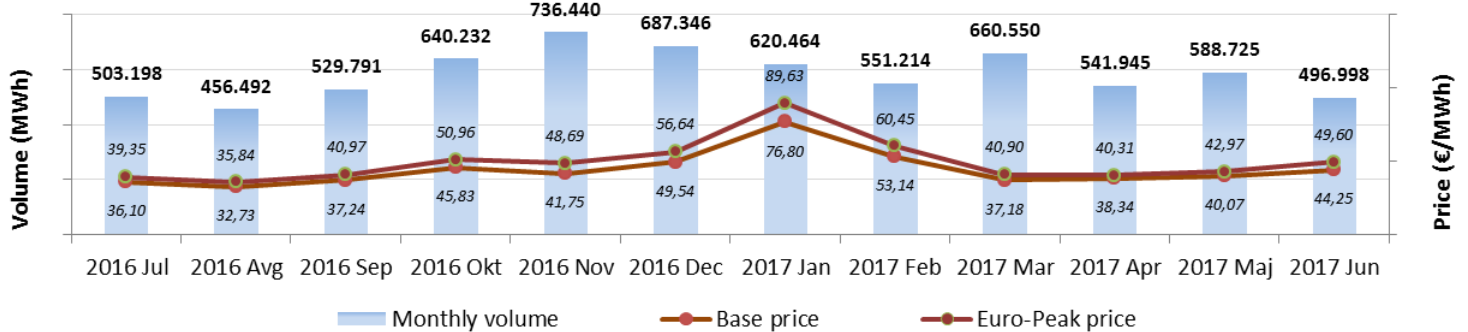
## MI2 & MI6 Implicit Auctions

Avg. SI-IT offered (MWh)/Avg. % Allocated	397.935 / 65,3%	Avg. Monthly volume MI2 (MWh)	29.499
Avg. IT-SI offered (MWh)/Avg.% Allocated	473.868 / 10,7%	Avg. Monthly volume MI6 (MWh)	8.464
Avg. SI-AT offered (MWh)/Avg. % Allocated	971.184 / 2,8%	Avg. SI-IT offered (MWh)/Avg. % Allocated	186.875 / 7,3%
Avg. AT-SI offered (MWh)/Avg. % Allocated	217.684 / 65,8%	Avg. IT-SI offered (MWh)/Avg.% Allocated	362.712 / 2,9%

\*Day-ahead coupling on SI-AT border was launched on 22<sup>nd</sup> July 2016. Therefore for average calculation, data from August is being used.

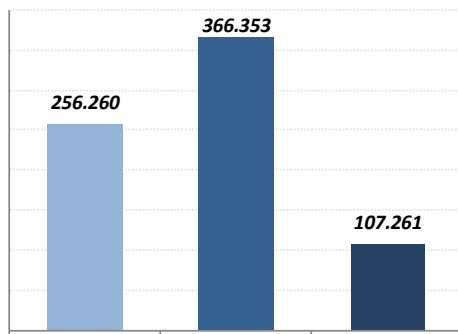
\*\*Intraday coupling on SI-IT border was launched on 21<sup>st</sup> June 2016. Therefore for average calculation, data from July is being used.

## Day-Ahead Market Volumes and Prices



## Intraday Volumes (MWh)

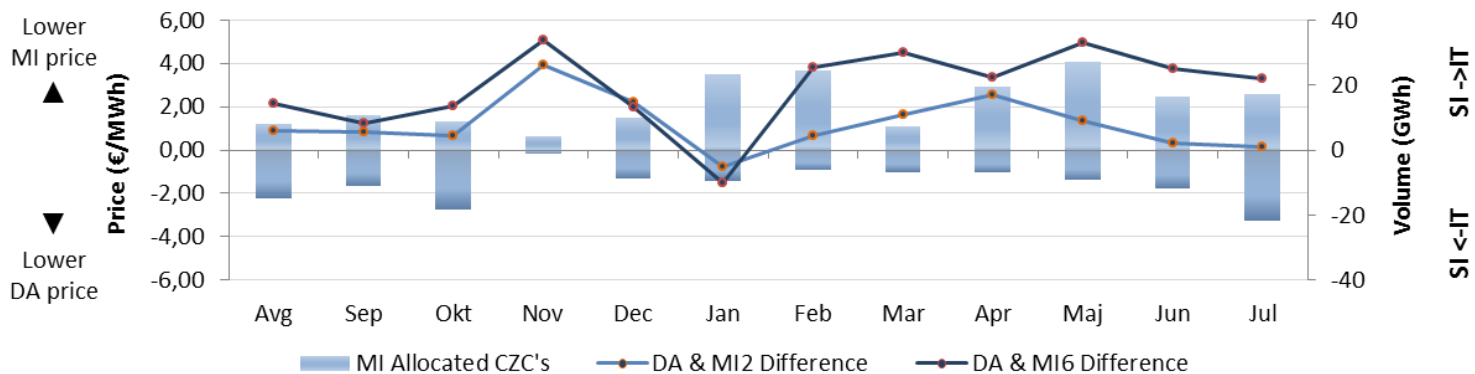
### Total Volume from August 2016



	Continuous	MI2	MI6
Avg	31.659	29.657	8.309
Sep	9.212	27.861	10.493
Okt	17.377	34.984	9.566
Nov	16.342	8.964	1.444
Dec	12.541	23.301	9.464
Jan	40.356	37.490	13.914
Feb	19.024	34.970	11.829
Mar	26.133	17.516	5.505
Apr	27.822	29.853	9.325
Maj	19.354	41.953	5.891
Jun	13.404	33.927	10.241
Jul	23.037	45.876	11.279


\*MI Auctions were launched on 22<sup>nd</sup> June 2016.


## Absolute Difference Between MI and Day-Ahead Prices & MI Offered Cross-Zonal Capacities



\*Cross-Zonal Capacities not allocated on Day-Ahead Auction are later offered for MI2 and MI6 Auctions.

**BSP Energy Exchange LL C**  
**Dunajska 156**  
**SI-1000 Ljubljana**  
**Slovenija**

 **+386 1 620 76 76**

 **+386 1 620 76 77**

 **[www.bsp-southpool.com](http://www.bsp-southpool.com)**

 **[info@bsp-southpool.com](mailto:info@bsp-southpool.com)**

