

- 🌐 First half 2017 – 20% increase in comparison to 1H 2016
- 🌐 Total trading volume for 1H 2017 reached 3,86 TWh

June Overall

Day-Ahead

Volume (MWh)

Total	496.998 ▼ 15,6%
Avg. daily	16.567 ▼ 12,8%
Max. daily	23.084 ▼ 5,7%
Min. daily	12.320 ▼ 6,5%

Price (€/MWh)

	Avg. Daily	Max. Daily	Min. Daily	Spec. Daily Volatility
Base	44,25 ▲ 10,4%	61,92	30,17	8,2%
Euro-Peak	49,60 ▲ 15,4%	71,14	28,91	11,3%

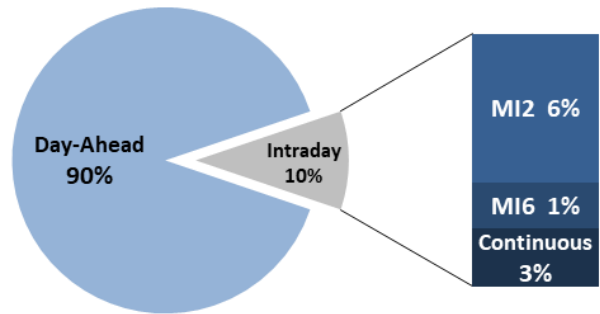
[Further Day-Ahead Auction Info.](#) (BSP website)

Intraday

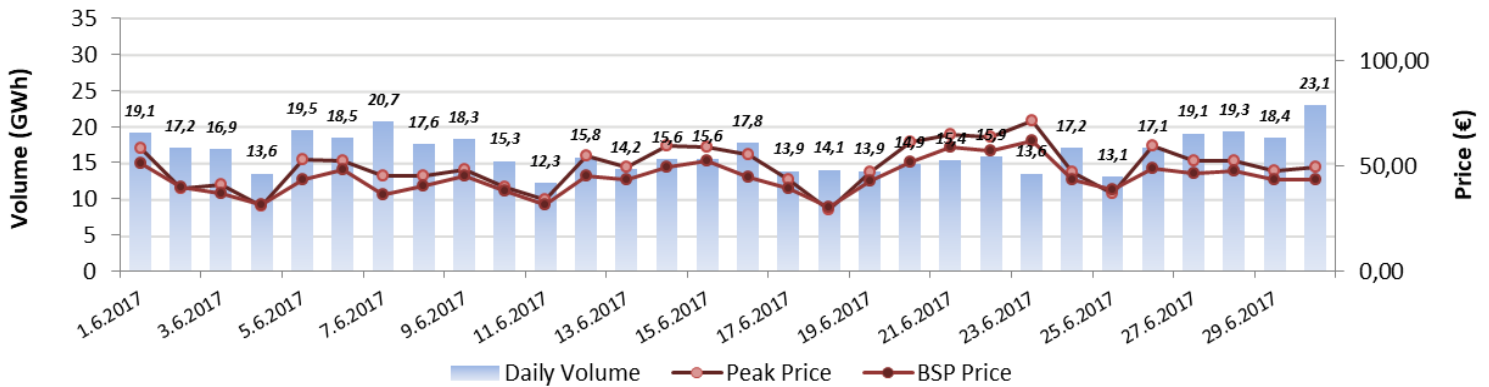
Volume (MWh) Avg. Price (€/MWh)

	Volume (MWh)	Avg. Price (€/MWh)
MI2	33.927 ▼ 19,1%	43,92 ▲ 13,4%
MI6	10.241 ▲ 73,9%	44,92 ▲ 13,1%
Continuous	13.404 ▼ 30,7%	/

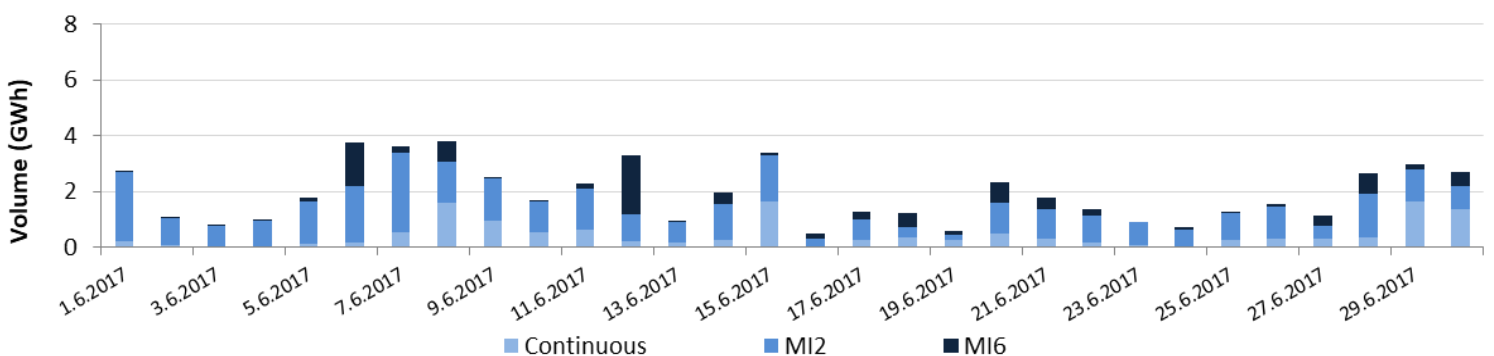
[Further Intraday Trading info.](#) (BSP website)



Day-Ahead Volumes and Prices



Intraday Daily Volumes



Day-Ahead Auction

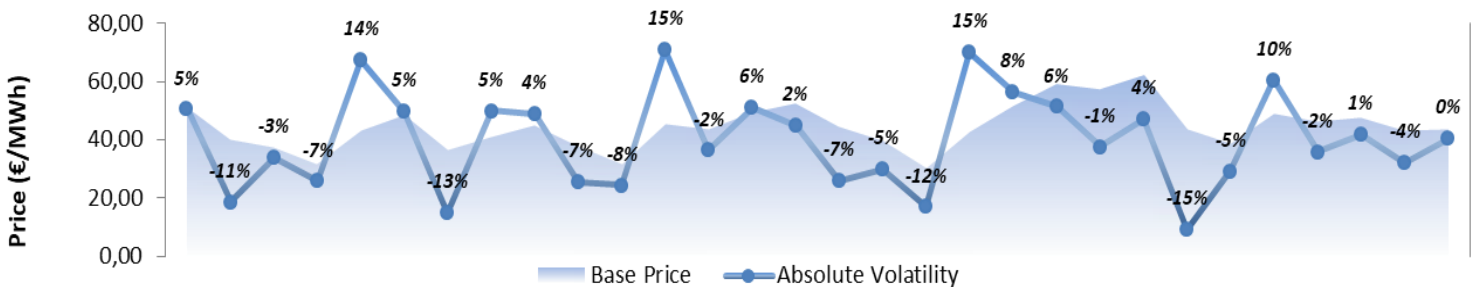
Average Hourly Prices

Hour (AM)	1	2	3	4	5	6	7	8	9	10	11	12
Volume (MWh)	702	664	656	647	638	634	650	680	700	694	653	693
Base price (€/MWh)	37,93	34,65	31,75	30,69	29,76	30,30	37,75	44,52	51,34	50,61	49,77	49,84
Hour (PM)	13	14	15	16	17	18	19	20	21	22	23	24
Volume (MWh)	766	755	665	654	645	655	724	746	729	739	755	723
Base price (€/MWh)	48,64	46,79	48,31	49,85	51,44	49,13	48,85	50,59	51,64	51,83	46,31	39,59

Cross-Zonal Capacities

	SI→IT	IT→SI	SI→AT	AT→SI	Total
Offered (MWh)	292.648	454.400	1.050.497	128.353	1.925.898
Allocated (MWh)	163.877	56.556	4.559	109.047	334.039
% Allocated	56,00%	12,45%	0,43%	84,96%	/

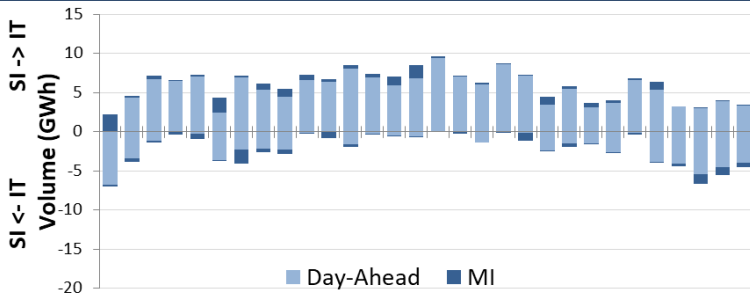
Daily Volatility of Base Price



[Methodology used for calculation of volatility.](#)

MI2 & MI6 Implicit Auctions

Allocated CZC Values on Slovenian-Italian Border

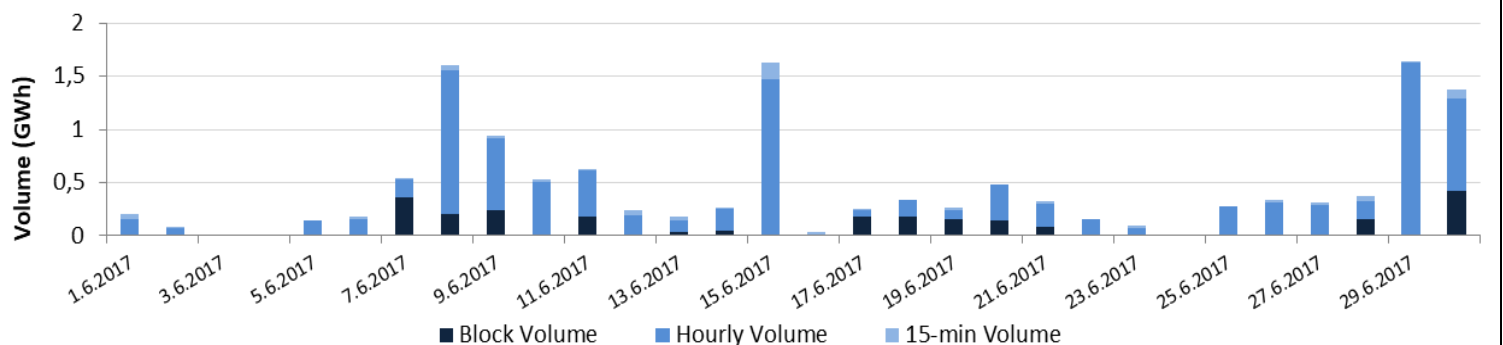


Cross-Zonal-Capacities

	SI-IT	IT-SI	Total
Offered (MWh)	185.329	280.002	465.331
Allocated (MWh)	16.292	11.626	27.918
% Allocated	8,79%	4,15%	/

Intraday Continuous Trading

Volumes by Products



For informational purposes only.

Past 12 Months Trade Information

Day-Ahead Auction

Avg. Monthly Volume (MWh)	561.353
Avg. Daily Volume (MWh)	18.455
Avg. Base Price (€/MWh)	42,24
Avg. Euro-Peak Price (€/MWh)	47,16

Intraday Continuous Trading

Avg. Monthly volume (MWh)	21.826
Avg. Nbr. Of Transactions	393

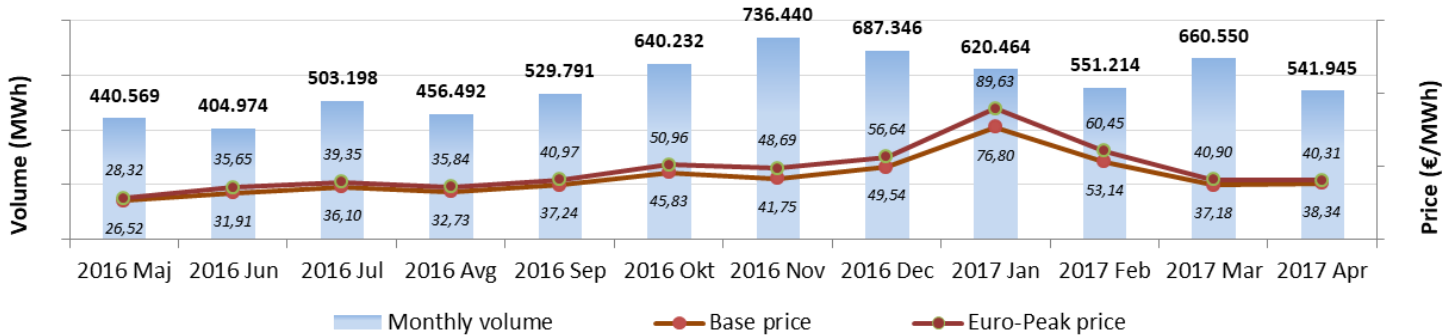
MI2 & MI6 Implicit Auctions

Avg. SI-IT offered (MWh)/Avg. % Allocated	388.308 / 64,1%	Avg. Monthly volume MI2 (MWh)	29.499
Avg. IT-SI offered (MWh)/Avg. % Allocated	472.121 / 10,6%	Avg. Monthly volume MI6 (MWh)	8.464
Avg. SI-AT offered (MWh)/Avg. % Allocated	971.184 / 2,8%	Avg. SI-IT offered (MWh)/Avg. % Allocated	186.875 / 7,3%
Avg. AT-SI offered (MWh)/Avg. % Allocated	217.684 / 65,8%	Avg. IT-SI offered (MWh)/Avg. % Allocated	362.712 / 2,9%

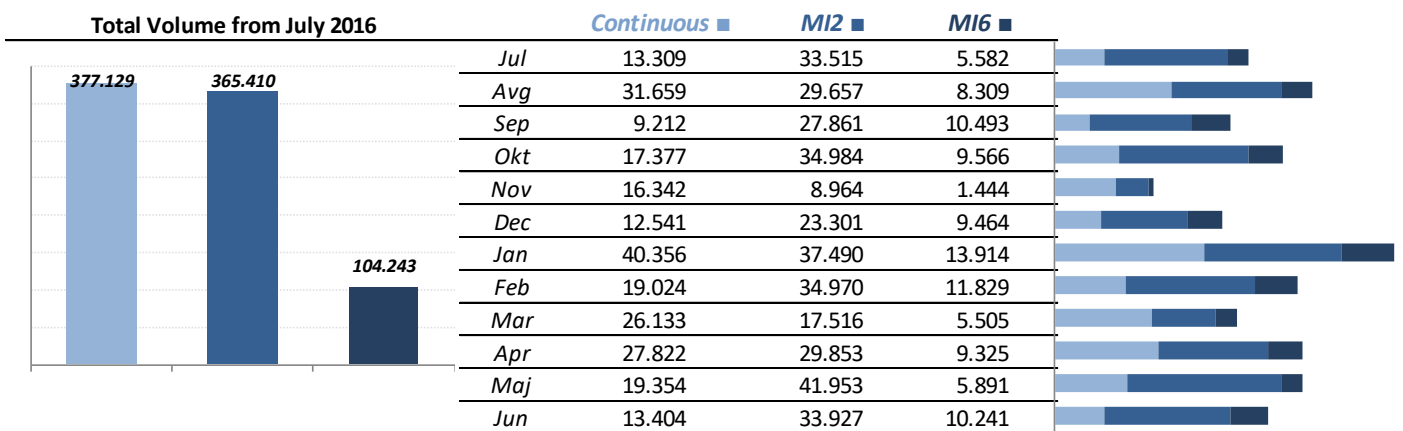
*Day-ahead coupling on SI-AT border was launched on 22nd July 2016. Therefore for average calculation, data from August is being used.

**Intraday coupling on SI-IT border was launched on 21st June 2016. Therefore for average calculation, data from July is being used.

Day-Ahead Market Volumes and Prices

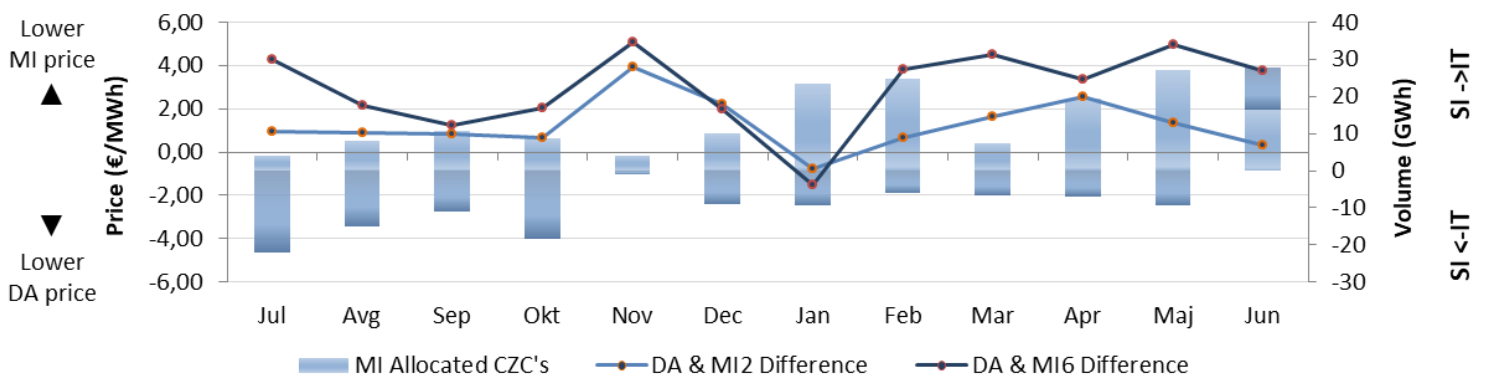


Intraday Volumes (MWh)




*MI Auctions were launched on 22nd June 2016.


Absolute Difference Between MI and Day-Ahead Prices & MI Offered Cross-Zonal Capacities




*Cross-Zonal Capacities not allocated on Day-Ahead Auction are later offered for MI2 and MI6 Auctions.

BSP Energy Exchange LL C
Dunajska 156
SI-1000 Ljubljana
Slovenija

 **+386 1 620 76 76**

 **+386 1 620 76 77**

 **www.bsp-southpool.com**

 **info@bsp-southpool.com**

