

March 2017

🌐 Exceptional Q1 – 18% higher trading volume in comparison to Q1 2016

🌐 Intraday trading segment 3,5-times more active in Q1 2017

March Overall

Day-Ahead

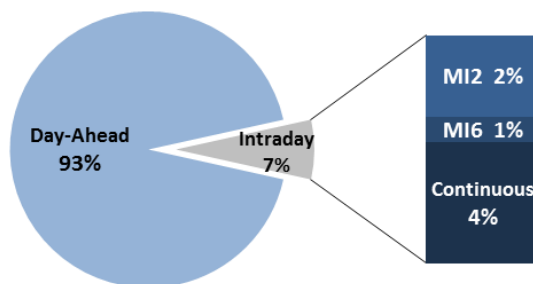
Volume (MWh)		Price (€/MWh)			
Total	660.550 ▲ 19,8%	Avg. Daily	Max. Daily	Min. Daily	Spec. Daily Volatility
Avg. daily	21.308 ▲ 8,2%	Base	47,05	17,84	12,4%
Max. daily	33.337 ▲ 36,8%	Euro-Peak	58,46	16,68	15,7%
Min. daily	13.802 ▼ 11,2%				

[Further Day-Ahead Auction Info.](#) (BSP website)

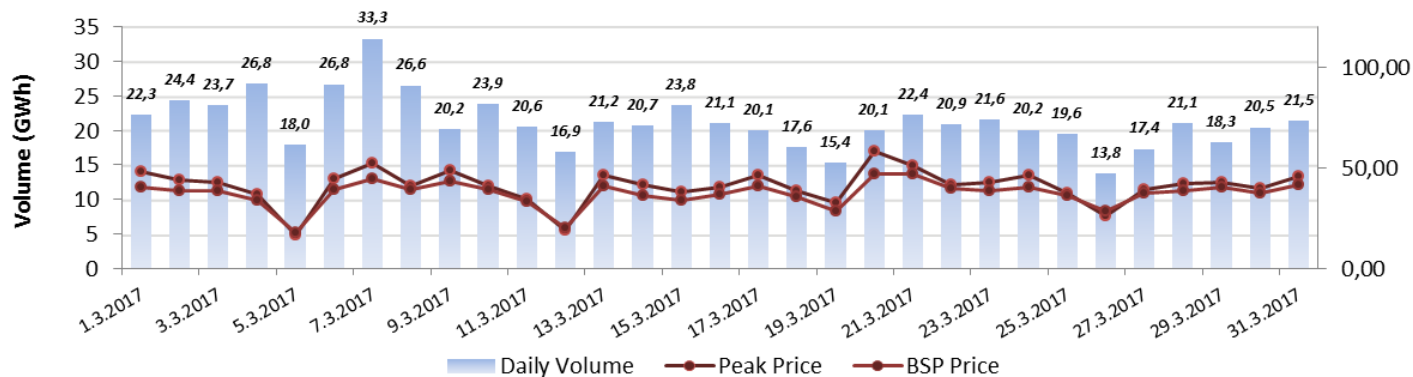
Intraday

	Volume (MWh)	Avg. Price (€/MWh)
MI2	17.516 ▼ 49,9%	35,55 ▼ 32,2%
MI6	5.505 ▼ 53,5%	38,14 ▼ 30,8%
Continuous	26.268 ▲ 37,4%	/

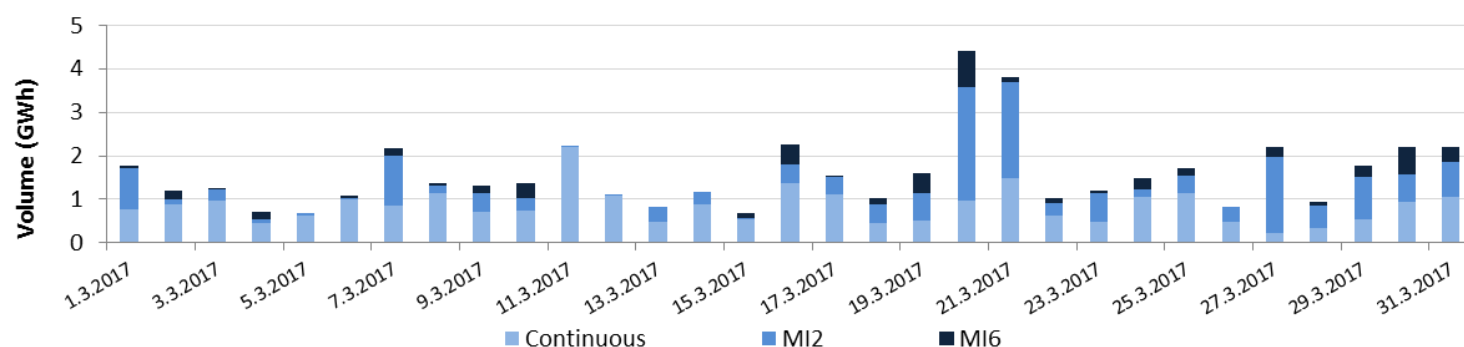
[Further Intraday Trading info.](#) (BSP website)



Day-Ahead Volumes and Prices



Intraday Daily Volumes



Day-Ahead Auction

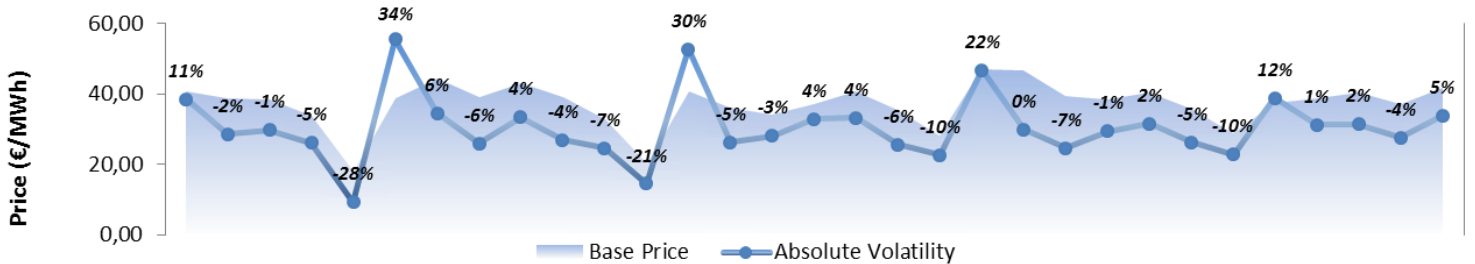
Average Hourly Prices

Hour (AM)	1	2	3	4	5	6	7	8	9	10	11	12
Volume (MWh)	857	882	907	913	846	833	834	888	902	874	845	831
Base price (€/MWh)	30,01	27,67	26,21	25,23	26,09	29,57	35,27	41,45	43,19	42,82	40,06	39,54
Hour (PM)	13	14	15	16	17	18	19	20	21	22	23	24
Volume (MWh)	833	809	814	840	875	961	997	993	969	950	957	898
Base price (€/MWh)	37,85	35,10	35,41	35,98	36,17	41,13	49,63	53,91	47,72	41,22	38,05	32,02

Cross-Zonal Capacities

	SI→IT	IT→SI	SI→AT	AT→SI	Total
Offered (MWh)	482.280	496.600	1.022.936	289.714	2.291.530
Allocated (MWh)	389.500	18.851	46.831	161.563	616.745
% Allocated	80,76%	3,80%	4,58%	55,77%	/

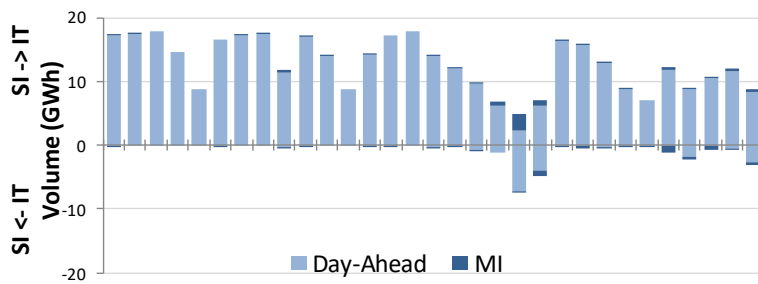
Daily Volatility of Base Price



[Methodology used for calculation of volatility.](#)

MI2 & MI6 Implicit Auctions

Allocated CZC Values on Slovenian-Italian Border

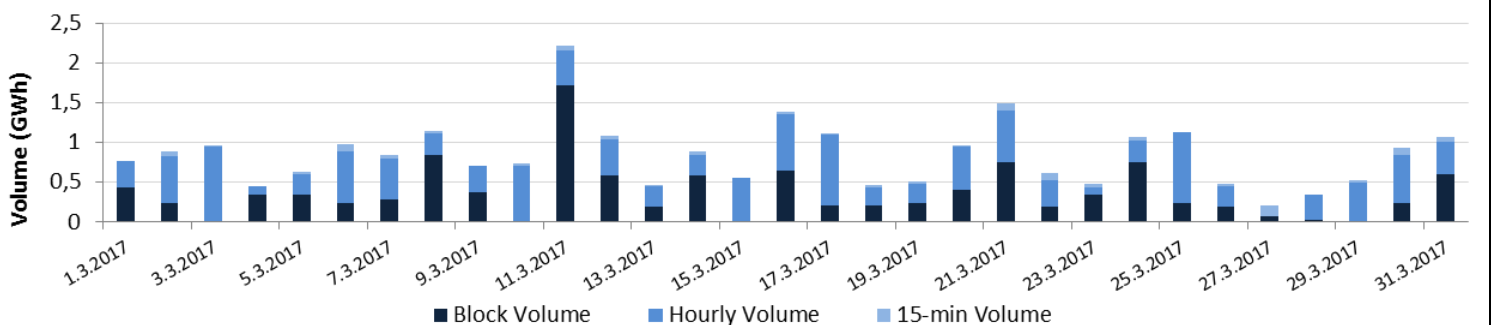


Cross-Zonal-Capacities

	SI-IT	IT-SI	Total
Offered (MWh)	111.630	461.720	573.350
Allocated (MWh)	7.233	6.712	13.945
% Allocated	6,48%	1,45%	/

Intraday Continuous Trading

Volumes by Products



Past 12 Months Trade Information

Day-Ahead Auction

Avg. Monthly Volume (MWh)	552.335
Avg. Daily Volume (MWh)	18.170
Avg. Base Price (€/MWh)	40,52
Avg. Euro-Peak Price (€/MWh)	45,43

Intraday Continuous Trading

Avg. Monthly volume (MWh)	24.201
Avg. Nbr. Of Transactions	391

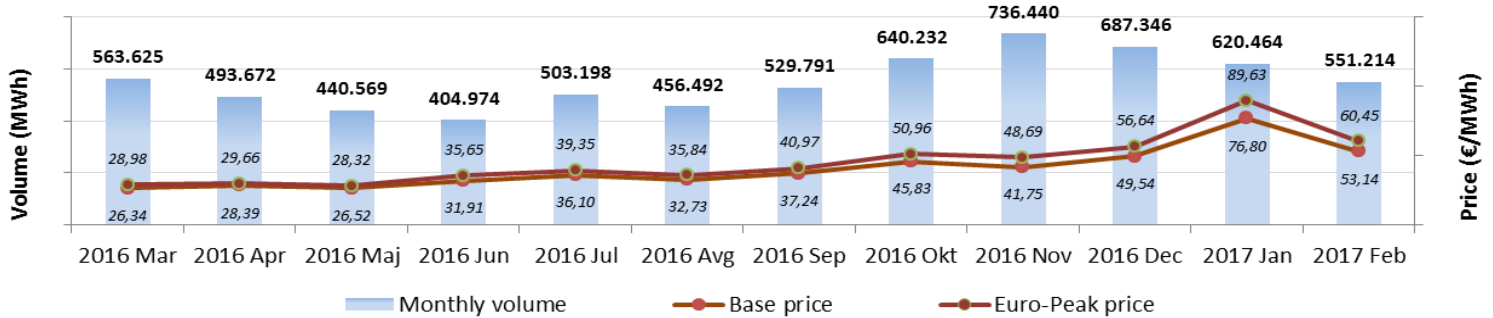
MI2 & MI6 Implicit Auctions

Avg. SI-IT offered (MWh)/Avg. % Allocated	400.968 / 69,0%	Avg. Monthly volume MI2 (MWh)	28.843
Avg. IT-SI offered (MWh)/Avg.% Allocated	473.792 / 8,1%	Avg. Monthly volume MI6 (MWh)	8.825
Avg. SI-AT offered (MWh)/Avg. % Allocated	930.149 / 3,5%	Avg. SI-IT offered (MWh)/Avg. % Allocated	163.471 / 7,2%
Avg. AT-SI offered (MWh)/Avg. % Allocated	215.280 / 61,9%	Avg. IT-SI offered (MWh)/Avg.% Allocated	378.393 / 3,0%

*Day-ahead coupling on SI-AT border was launched on 22nd July 2016. Therefore for average calculation, data from August is being used.

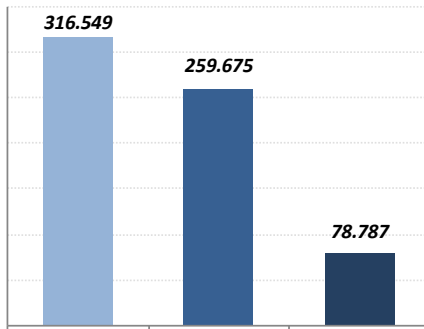
**Intraday coupling on SI-IT border was launched on 21st June 2016. Therefore for average calculation, data from July is being used.

Day-Ahead Market Volumes and Prices



Intraday Volumes (MWh)

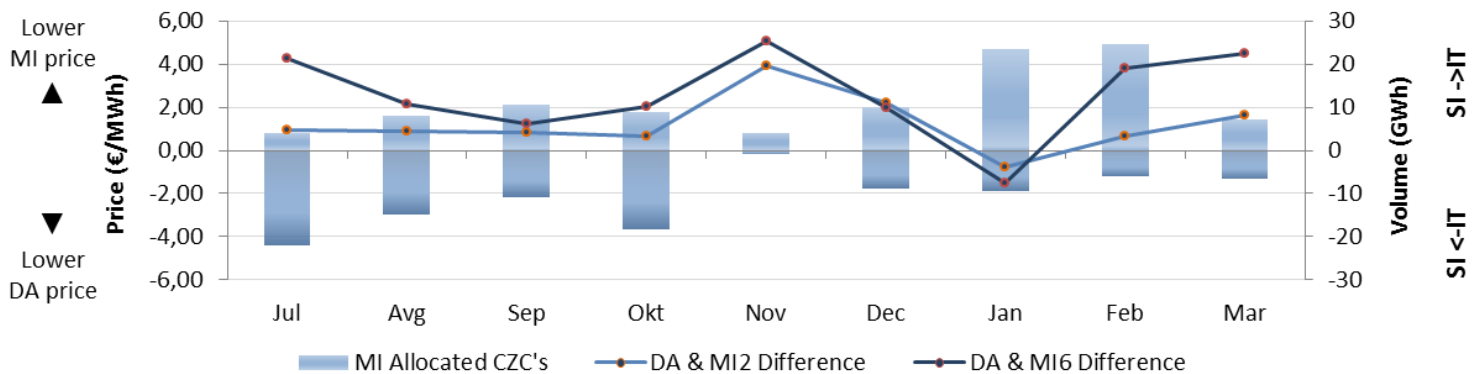
Total Volume from February 2016



	Continuous	MI2	MI6
Mar	17.816	*	*
Apr	53.887	*	*
Maj	29.850	*	*
Jun	29.045	11.418	2.679
Jul	13.309	33.515	5.582
Avg	31.659	29.657	8.309
Sep	9.212	27.861	10.493
Okt	17.377	34.984	9.566
Nov	16.342	8.964	1.444
Dec	12.541	23.301	9.464
Jan	40.356	37.490	13.914
Feb	19.024	34.970	11.829

*MI Auctions were launched on 22nd June 2016.

Absolute Difference Between MI and Day-Ahead Prices & MI Offered Cross-Zonal Capacities



*Cross-Zonal Capacities not allocated on Day-Ahead Auction are later offered for MI2 and MI6 Auctions.