

- 🌐 Total trading volume reached 609 GWh for November
- 🌐 On the 7th December – volume surpassed already 7 TWh
- 🌐 Average Base Price at 59,83 €/MWh

November Overall

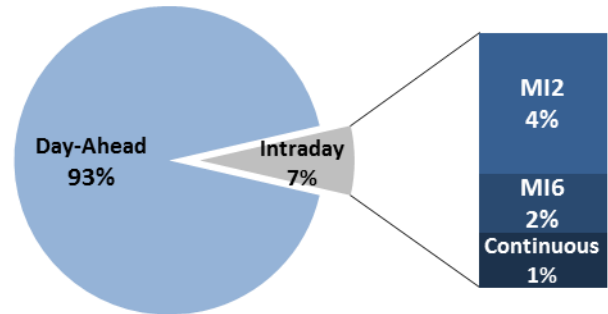
Day-Ahead

Volume (MWh)		Price (€/MWh)			
Total	564.837 ▲ 0,2%	Avg. Daily	Max. Daily	Min. Daily	Spec. Daily Volatility
Avg. daily	18.828 ▲ 3,6%	Base	79,84	33,36	9,8%
Max. daily	25.998 ▲ 6,0%	Euro-Peak	100,38	43,30	11,4%
Min. daily	13.002 ▲ 25,9%				

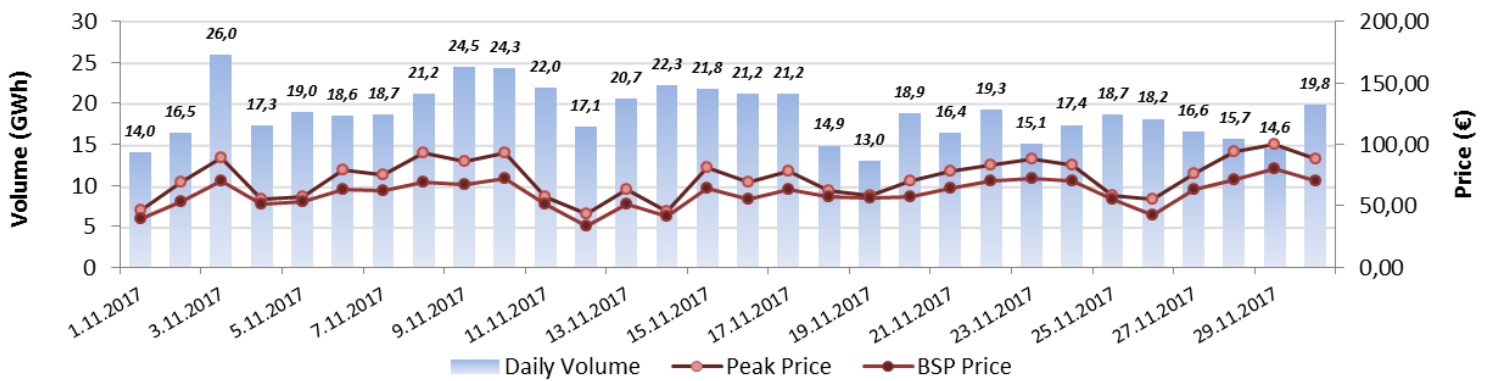
[Further Day-Ahead Auction Info.](#) (BSP website)

Intraday		
	Volume (MWh)	Avg. Price (€/MWh)
MI2	24.392 ▼ 13,6%	58,38 ▲ 19,7%
MI6	10.152 ▲ 43,3%	65,11 ▲ 16,2%
Continuous	9.509 ▼ 45,2%	/

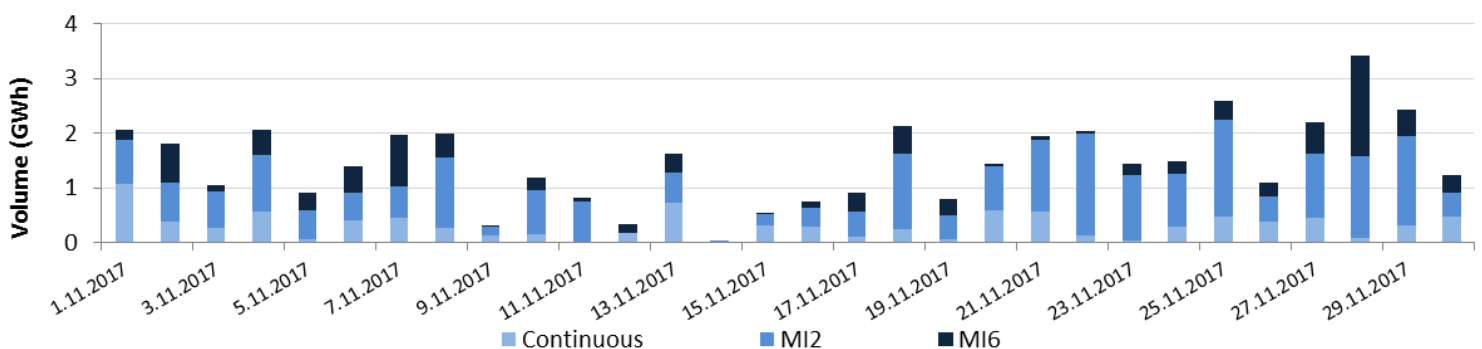
[Further Intraday Trading info.](#) (BSP website)



Day-Ahead Volumes and Prices



Intraday Daily Volumes



Day-Ahead Auction

Average Hourly Volumes and Prices

Hour (AM)	1	2	3	4	5	6	7	8	9	10	11	12
Volume (MWh)	748	723	739	747	716	712	733	746	815	816	817	827
Base price (€/MWh)	43,14	38,03	36,47	33,35	35,80	41,23	51,59	63,53	70,49	68,33	66,76	69,69
Hour (PM)	13	14	15	16	17	18	19	20	21	22	23	24
Volume (MWh)	806	782	786	818	882	850	848	842	795	754	749	779
Base price (€/MWh)	68,64	66,89	66,45	68,76	77,83	87,45	83,97	74,94	68,63	57,48	51,80	44,59

Cross-Zonal Capacities

	SI→IT	IT→SI	SI→AT	AT→SI	Total
Offered (MWh)	428.308	481.600	1.002.342	212.058	2.124.308
Allocated (MWh)	259.100	55.389	10.650	166.205	491.343
% Allocated	60,49%	11,50%	1,06%	78,38%	/

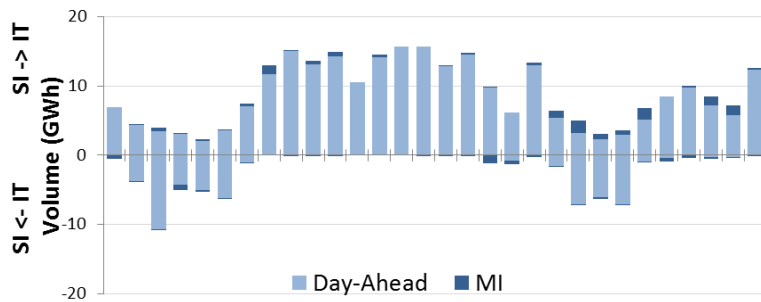
Daily Volatility of Base Price



[Methodology used for calculation of volatility.](#)

MI2 & MI6 Implicit Auctions

Allocated CZC Values on Slovenian-Italian Border



Cross-Zonal-Capacities

	SI-IT	IT-SI	Total
Offered (MWh)	224.598	158.715	383.313
Allocated (MWh)	14.384	5.675	20.059
% Allocated	6,40%	3,58%	/

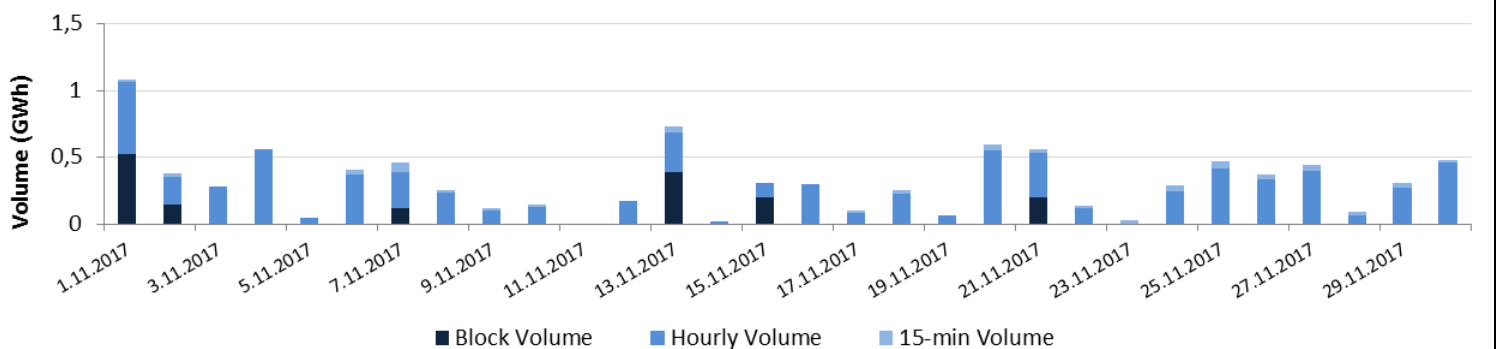


Read more about European Pilot Project

[Implicit Intraday Auctions \(MI2 & MI6\)](#)

Intraday Continuous Trading

Volumes by Products



For informational purposes only.

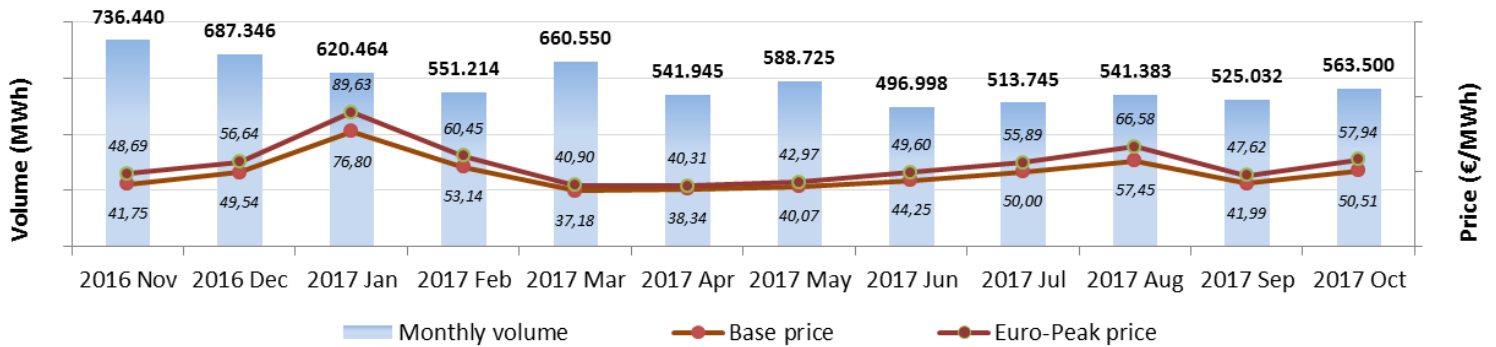
Past 12 Months Trade Information

Day-Ahead Auction

Intraday Continuous Trading

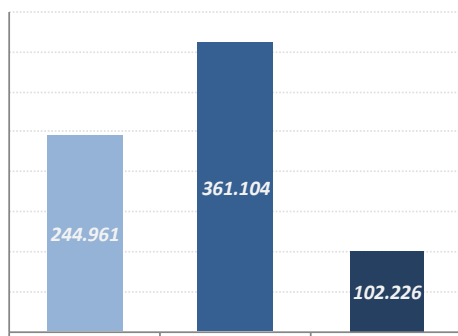
Avg. Monthly Volume (MWh)	585.612	Avg. Monthly volume (MWh)	20.425
Avg. Daily Volume (MWh)	19.253	Avg. Nbr. Of Transactions	419
Avg. Base Price (€/MWh)	48,42	MI2 & MI6 Implicit Auctions	
Avg. Euro-Peak Price (€/MWh)	54,77		
Avg. SI-IT offered (MWh)/Avg. % Allocated	402.050 / 56,8%	Avg. Monthly volume MI2 (MWh)	30.092
Avg. IT-SI offered (MWh)/Avg.% Allocated	476.735 / 15,5%	Avg. Monthly volume MI6 (MWh)	8.519
Avg. SI-AT offered (MWh)/Avg. % Allocated	987.053 / 2,6%	Avg. SI-IT offered (MWh)/Avg. % Allocated	245.603 / 6,0%
Avg. AT-SI offered (MWh)/Avg. % Allocated	231.173 / 68,2%	Avg. IT-SI offered (MWh)/Avg.% Allocated	312.749 / 3,3%

Day-Ahead Market Volumes and Prices



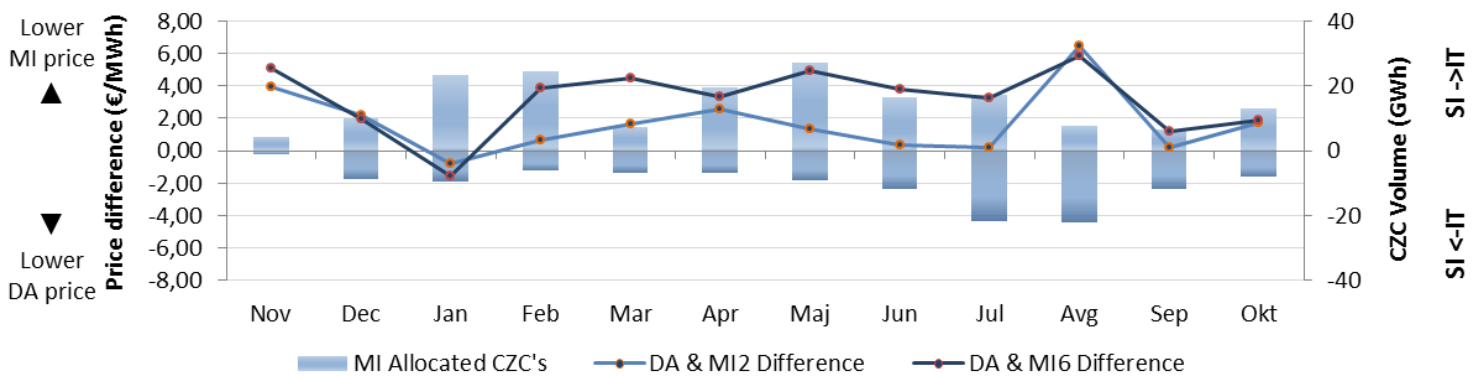
Intraday Volumes (MWh)

Total Volume in the past 12 months




	Continuous	MI2	MI6
Nov. 16	16.342	8.964	1.444
Dec. 16	12.541	23.301	9.464
Jan. 17	40.356	37.490	13.914
Feb. 17	19.024	34.970	11.829
Mar. 17	26.133	17.516	5.505
Apr. 17	27.822	29.853	9.325
Maj. 17	19.354	41.953	5.891
Jun. 17	13.404	33.927	10.241
Jul. 17	23.037	45.876	11.279
Avg. 17	13.612	34.912	10.123
Sep. 17	15.999	24.093	6.127
Oct. 17	17.338	28.246	7.084


Absolute Difference Between MI and Day-Ahead Prices & MI Offered Cross-Zonal Capacities



*Cross-Zonal Capacities not allocated on Day-Ahead Auction are later offered for MI2 and MI6 Auctions.

BSP Energy Exchange LL C
Dunajska 156
SI-1000 Ljubljana
Slovenija

 **+386 1 620 76 76**

 **+386 1 620 76 77**

 **www.bsp-southpool.com**

 **info@bsp-southpool.com**

