

- 🌐 Total traded volume in October 2017 amounted 616,2 GWh
- 🌐 Average daily Base Price above 50 €/MWh with 7,7% Daily Volatility
- 🌐 Intraday trading segment – 52,7 GWh (14% increase vs. September)

October Overall

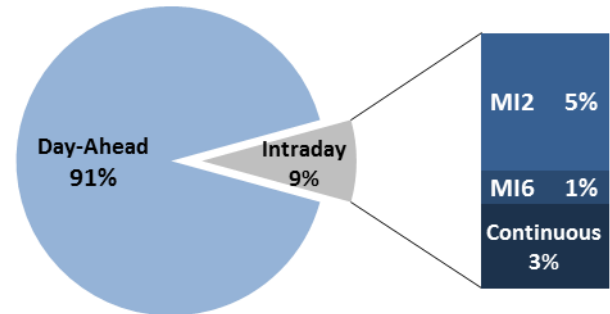
Day-Ahead

Volume (MWh)		Price (€/MWh)				
Total	563.500 ▲ 7,3%					
Avg. daily	18.177 ▲ 3,9%	Avg. Daily	Max. Daily	Min. Daily	Spec. Daily Volatility	
Max. daily	24.519 ▲ 7,9%	Base	65,74	30,08	7,7%	
Min. daily	10.326 ▼ 25,0%	Euro-Peak	57,94 ▲ 21,7%	74,62	36,33	9,1%

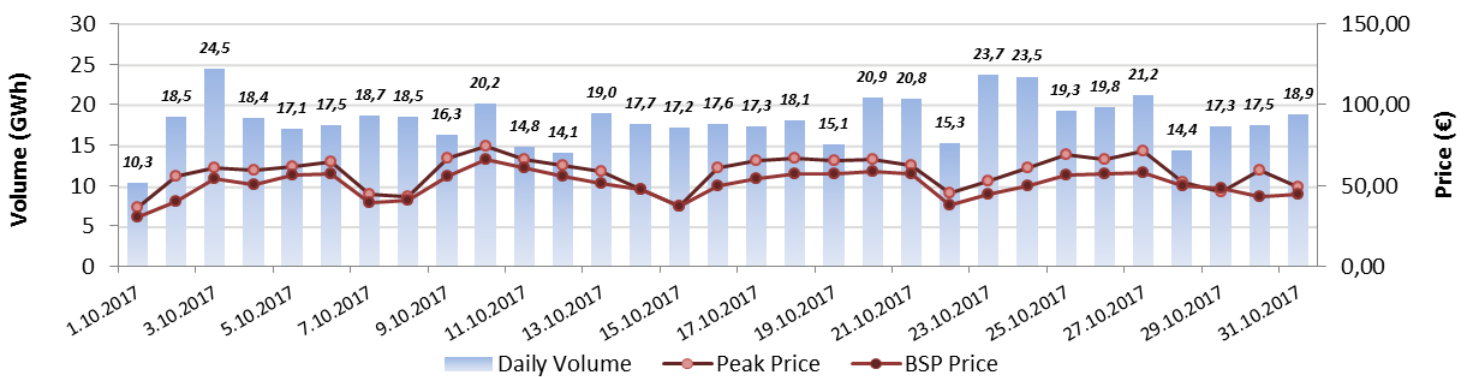
[Further Day-Ahead Auction Info.](#) (BSP website)

Intraday		
	Volume (MWh)	Avg. Price (€/MWh)
MI2	28.246 ▲ 17,2%	48,77 ▲ 16,8%
MI6	7.084 ▲ 15,6%	56,06 ▲ 25,4%
Continuous	17.338 ▲ 8,4%	/

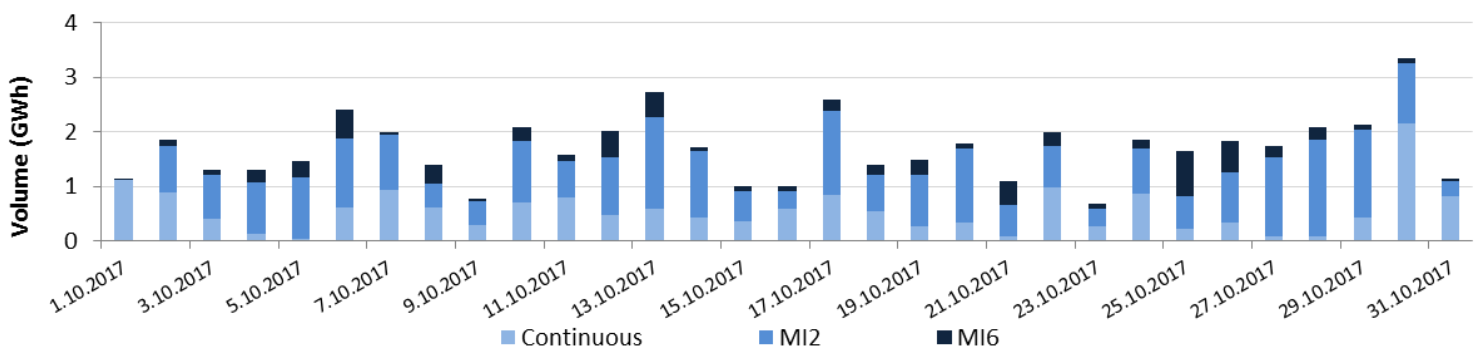
[Further Intraday Trading info.](#) (BSP website)



Day-Ahead Volumes and Prices



Intraday Daily Volumes



Day-Ahead Auction

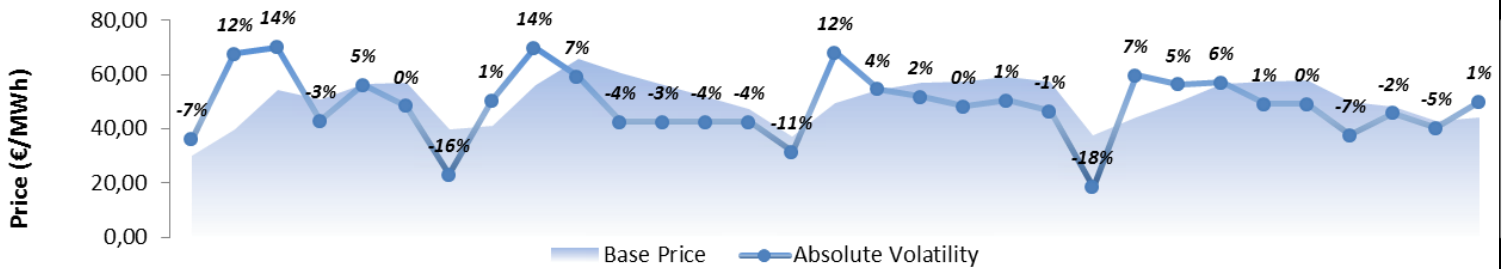
Average Hourly Volumes and Prices

Hour (AM)	1	2	3	4	5	6	7	8	9	10	11	12
Volume (MWh)	726	743	751	773	748	741	738	747	773	781	742	735
Base price (€/MWh)	40,23	33,16	30,45	28,99	30,25	36,28	49,62	56,71	59,94	57,62	56,62	57,43
Hour (PM)	13	14	15	16	17	18	19	20	21	22	23	24
Volume (MWh)	735	732	711	728	705	742	876	855	775	772	765	763
Base price (€/MWh)	55,18	52,97	51,36	52,16	54,43	57,59	65,08	74,94	63,29	54,91	48,73	44,39

Cross-Zonal Capacities

	SI→IT	IT→SI	SI→AT	AT→SI	Total
Offered (MWh)	464.510	490.110	971.892	193.308	2.119.820
Allocated (MWh)	214.192	75.958	6.006	166.342	462.497
% Allocated	46,11%	15,50%	0,62%	86,05%	/

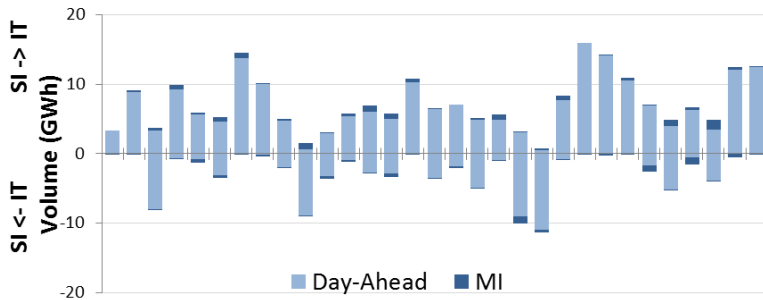
Daily Volatility of Base Price



[Methodology used for calculation of volatility.](#)

MI2 & MI6 Implicit Auctions

Allocated CZC Values on Slovenian-Italian Border



Cross-Zonal-Capacities

	SI-IT	IT-SI	Total
Offered (MWh)	326.167	173.017	499.184
Allocated (MWh)	12.880	7.979	20.859
% Allocated	3,95%	4,61%	/

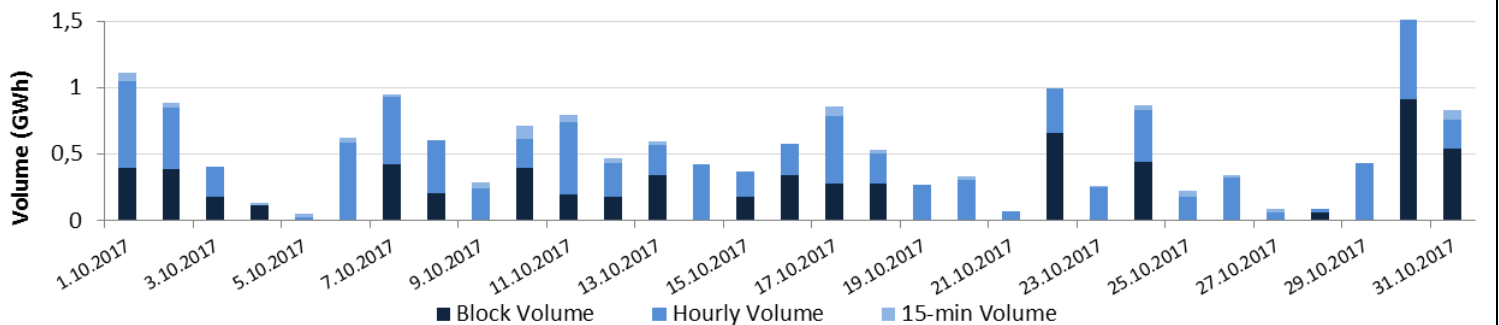


Read more about European Pilot Project

[Implicit Intraday Auctions \(MI2 & MI6\)](#)

Intraday Continuous Trading

Volumes by Products



Past 12 Months Trade Information

Day-Ahead Auction

Avg. Monthly Volume (MWh)	592.006
Avg. Daily Volume (MWh)	19.463
Avg. Base Price (€/MWh)	48,03
Avg. Euro-Peak Price (€/MWh)	54,19

Intraday Continuous Trading

Avg. Monthly volume (MWh)	20.428
Avg. Nbr. Of Transactions	421

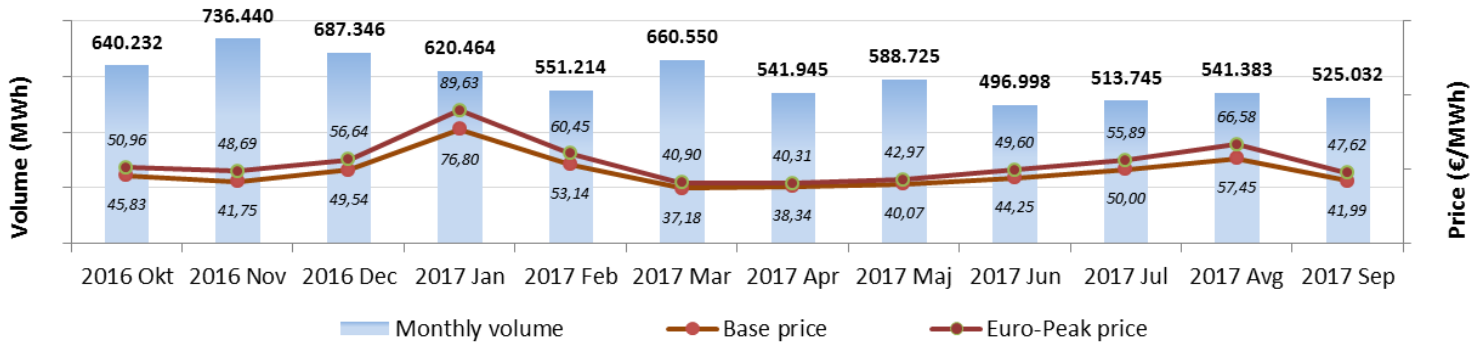
MI2 & MI6 Implicit Auctions

Avg. SI-IT offered (MWh)/Avg. % Allocated	404.117 / 60,2%	Avg. Monthly volume MI2 (MWh)	30.653
Avg. IT-SI offered (MWh)/Avg. % Allocated	477.416 / 14,3%	Avg. Monthly volume MI6 (MWh)	8.726
Avg. SI-AT offered (MWh)/Avg. % Allocated	985.399 / 2,7%	Avg. SI-IT offered (MWh)/Avg. % Allocated	227.544 / 6,3%
Avg. AT-SI offered (MWh)/Avg. % Allocated	228.994 / 66,6%	Avg. IT-SI offered (MWh)/Avg. % Allocated	335.713 / 3,3%

*Day-ahead coupling on SI-AT border was launched on 22nd July 2016. Therefore for average calculation, data from August is being used.

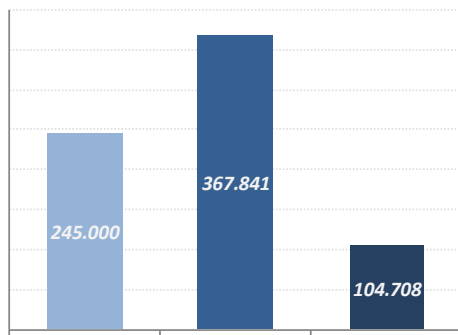
**Intraday coupling on SI-IT border was launched on 21st June 2016. Therefore for average calculation, data from July is being used.

Day-Ahead Market Volumes and Prices



Intraday Volumes (MWh)

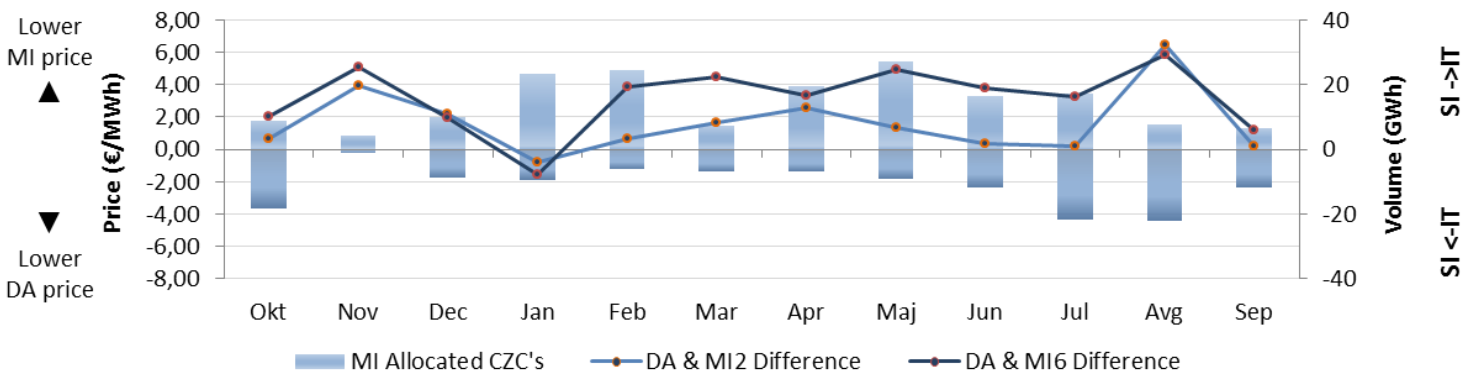
Total Volume in past 12 months



	Continuous	MI2	MI6
Okt. 16	17.377	34.984	9.566
Nov. 16	16.342	8.964	1.444
Dec. 16	12.541	23.301	9.464
Jan. 17	40.356	37.490	13.914
Feb. 17	19.024	34.970	11.829
Mar. 17	26.133	17.516	5.505
Apr. 17	27.822	29.853	9.325
Maj. 17	19.354	41.953	5.891
Jun. 17	13.404	33.927	10.241
Jul. 17	23.037	45.876	11.279
Avg. 17	13.612	34.912	10.123
Sep. 17	15.999	24.093	6.127


*MI Auctions were launched on 22nd June 2016.


Absolute Difference Between MI and Day-Ahead Prices & MI Offered Cross-Zonal Capacities




*Cross-Zonal Capacities not allocated on Day-Ahead Auction are later offered for MI2 and MI6 Auctions.

BSP Energy Exchange LL C
Dunajska 156
SI-1000 Ljubljana
Slovenija

 **+386 1 620 76 76**

 **+386 1 620 76 77**

 **www.bsp-southpool.com**

 **info@bsp-southpool.com**

