

- 🌐 Total trading volume in April reached 675 GWh
- 🌐 Intraday trading volume represents 16% in total trading volume
- 🌐 Average daily Base price at 23,75 €/MWh

April Overall

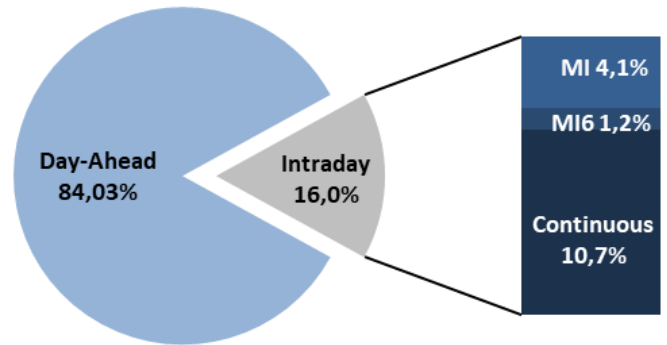
Day-Ahead

Volume (MWh)		Price (€/MWh)				
Total	567.359 ▼ 9,0%					
Avg. daily	18.912 ▼ 6,0%	Avg. Daily	Max. Daily	Min. Daily	Spec. Daily Volatility	
Max. daily	24.816 ▼ 10,1%	Base	31,11	9,20	14,3%	
Min. daily	14.492 ▲ 5,5%	Euro-Peak	24,08 ▼ 24,9%	35,13	8,11	20,4%

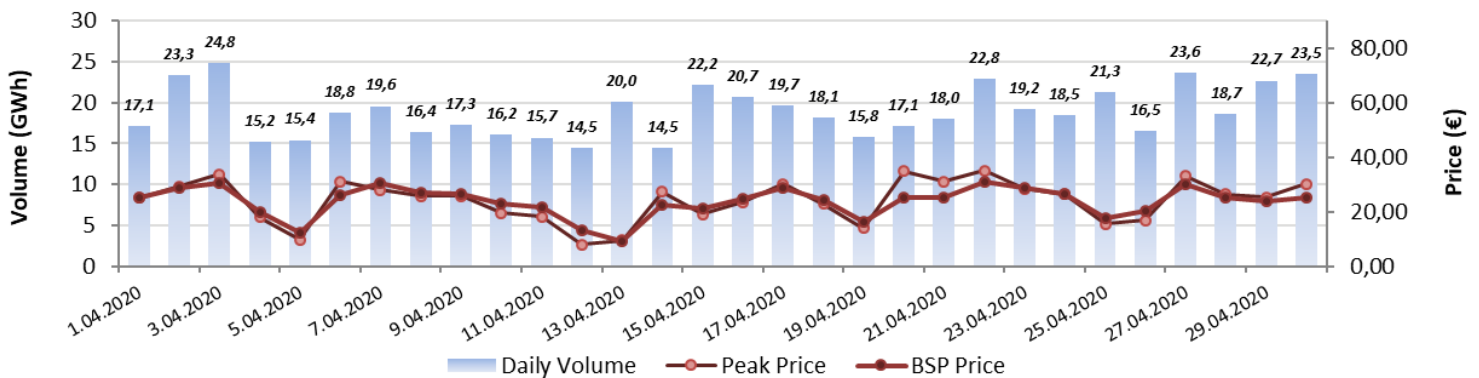
[Further Day-Ahead Auction Info.](#) (BSP website)

Intraday		
	Volume (MWh)	Avg. Price (€/MWh)
MI2	27.901 ▼ 8,2%	19,05 ▼ 28,0%
MI6	8.008 ▲ 0,2%	37,97 ▲ 27,9%
Continuous	71.949 ▼ 7,7%	

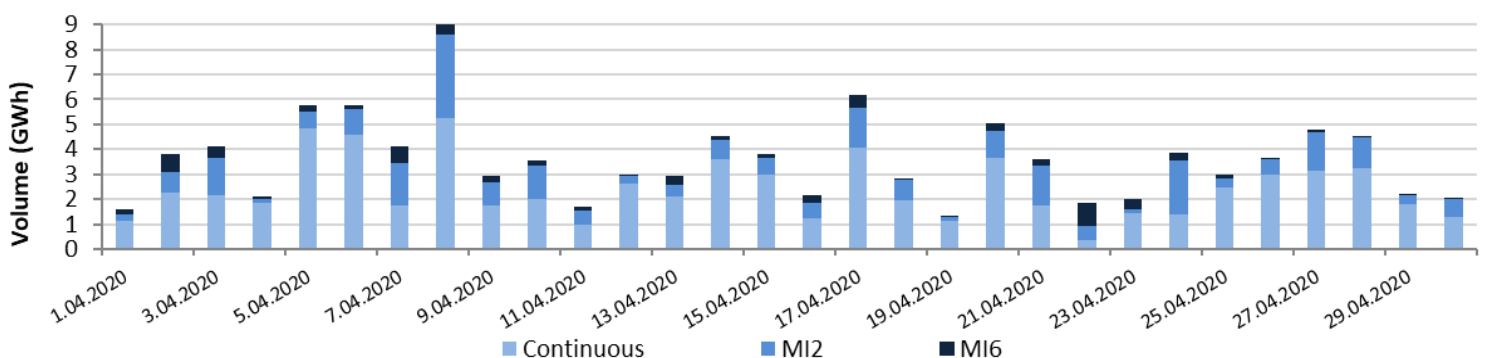
[Further Intraday Trading info.](#) (BSP website)



Day-Ahead Volumes and Prices



Intraday Daily Volumes



Day-Ahead Auction

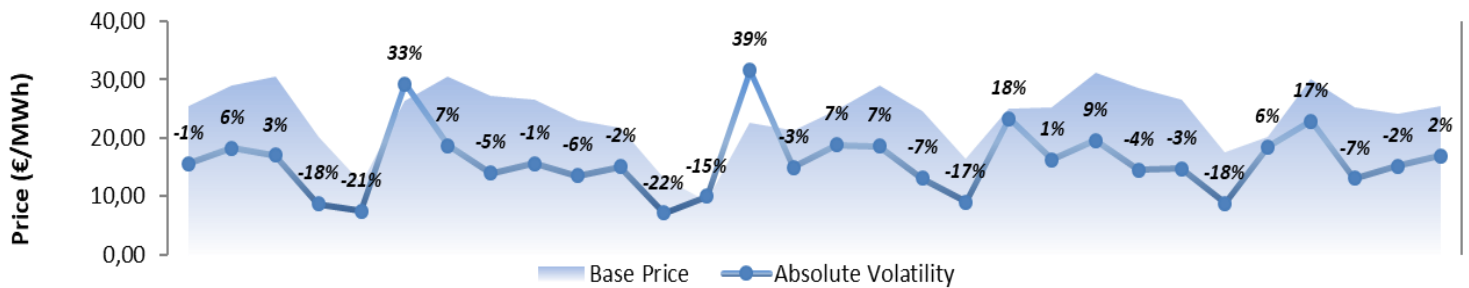
Average Hourly Volumes and Prices

Hour (AM)	1	2	3	4	5	6	7	8	9	10	11	12
Volume (MWh)	780	725	697	690	728	702	629	748	746	731	742	788
Base price (€/MWh)	21,41	17,91	16,90	15,49	16,28	19,03	23,30	27,23	27,97	26,20	23,73	23,57
Hour (PM)	13	14	15	16	17	18	19	20	21	22	23	24
Volume (MWh)	868	874	796	768	769	793	857	901	967	908	910	795
Base price (€/MWh)	23,01	19,41	17,80	18,84	20,03	23,39	27,97	37,11	40,75	33,19	26,64	22,77

Cross-Zonal Capacities

	SI→IT	IT→SI	SI→AT	AT→SI	SI→HR	HR→SI	Total
Offered (MWh)	196.088	481.920	817.476	368.624	755.351	1.404.649	4.024.108
Allocated (MWh)	29.072	204.434	34.168	241.568	276.736	14.824	800.802
% Allocated	14,83%	42,42%	4,18%	65,53%	36,64%	1,06%	

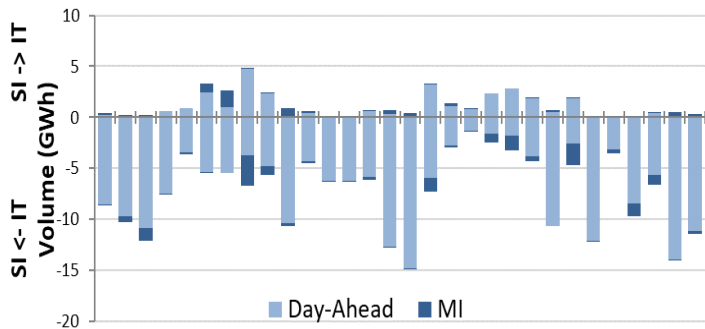
Daily Volatility of Base Price



[Methodology used for calculation of volatility.](#)

MI2 & MI6 Implicit Auctions

Allocated CZC Values on Slovenian-Italian Border



Cross-Zonal-Capacities

	SI-IT	IT-SI	Total
Offered (MWh)	321.145	282.676	603.821
Allocated (MWh)	6.782	16.933	23.715
% Allocated	2,11%	5,99%	/

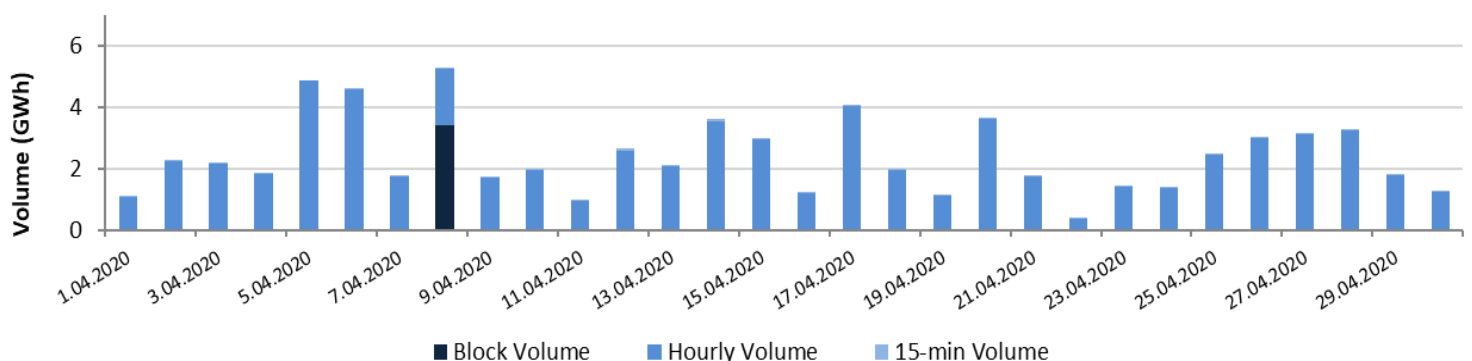


Read more about European Pilot Project

[Implicit Intraday Auctions \(MI2 & MI6\)](#)

Intraday Continuous Trading

Volumes by Products



For informational purposes only.

Past 12 Months Trade Information

Day-Ahead Auction

Avg. Monthly Volume (MWh)	691.804
Avg. Daily Volume (MWh)	22.682
Avg. Base Price (€/MWh)	43,80
Avg. Euro-Peak Price (€/MWh)	48,36
Avg. SI-IT offered (MWh)/Avg. % Allocated	375.420 / 40,1%
Avg. IT-SI offered (MWh)/Avg.% Allocated	465.462 / 27,7%
Avg. SI-AT offered (MWh)/Avg. % Allocated	812.985 / 2,8%
Avg. AT-SI offered (MWh)/Avg. % Allocated	484.649 / 72,6%
Avg. SI-HR offered (MWh)/Avg. % Allocated	797.268 / 27,5%
Avg. HR-SI offered (MWh)/Avg. % Allocated	1.379.163 / 5,8%

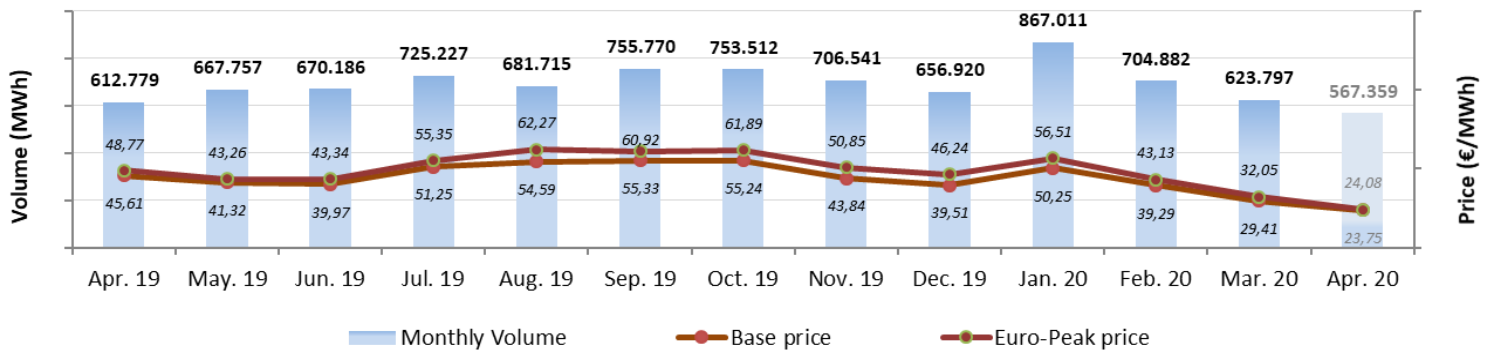
Intraday Continuous Trading

Avg. Monthly Volume (MWh)	39.178
Number of trades	13.975

MI2 & MI6 Implicit Auctions

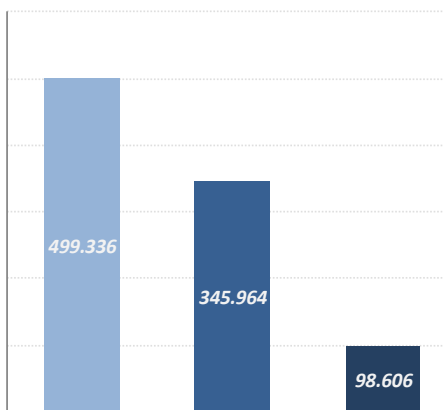
Avg. Monthly volume MI2 (MWh)	30.828
Avg. Monthly volume MI6 (MWh)	8.695
Avg. SI-IT offered (MWh)/Avg. % Allocated	339.667 / 3,6%
Avg. IT-SI offered (MWh)/Avg.% Allocated	263.232 / 4,4%

Day-Ahead Market Volumes and Prices



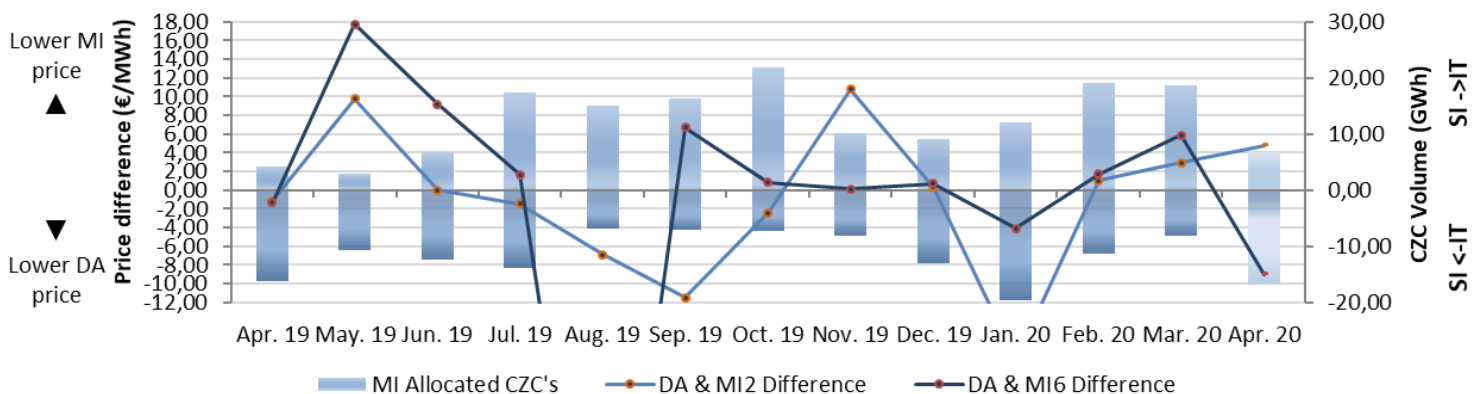
Intraday Volumes (MWh)

Total Volume in the past 12 months




	Continuous	MI2	MI6
May. 19	10.299	16.901	4.707
Jun. 19	9.999	23.118	11.256
Jul. 19	9.834	34.572	11.544
Aug. 19	13.075	26.922	5.042
Sep. 19	12.887	27.784	5.345
Oct. 19	7.756	32.170	9.045
Nov. 19	28.771	26.380	5.879
Dec. 19	98.311	28.693	11.110
Jan. 20	84.528	36.402	6.842
Feb. 20	73.982	34.742	11.831
Mar. 20	77.947	30.378	7.996
Apr. 20	71.949	27.901	8.008


Absolute Difference Between MI and Day-Ahead Prices & MI Offered Cross-Zonal Capacities




*Cross-Zonal Capacities not allocated on Day-Ahead Auction are later offered for MI2 and MI6 Auctions.

BSP Energy Exchange LL C
Dunajska 156
SI-1000 Ljubljana
Slovenija

 **+386 1 620 76 76**

 **+386 1 620 76 77**

 **www.bsp-southpool.com**

 **info@bsp-southpool.com**

