

- 🌐 Total trading volume in November reached 743 GWh
- 🌐 Intraday trading volume represents 16,4% in total trading volume
- 🌐 Average daily Base price at 46,91 €/MWh

November Overall

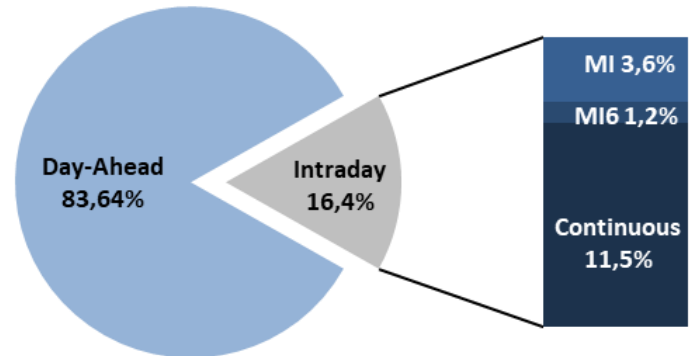
Day-Ahead

Volume (MWh)		Price (€/MWh)				
Total	621.002 ▼ 4,1%	Avg. Daily	Max. Daily	Min. Daily	Spec. Daily Volatility	
Avg. daily	20.700 ▼ 0,9%	Base	68,62	21,94	8,3%	
Max. daily	30.338 ▲ 17,0%	Euro-Peak	53,41 ▲ 21,8%	84,09	26,66	9,8%
Min. daily	14.529 ▼ 2,2%					

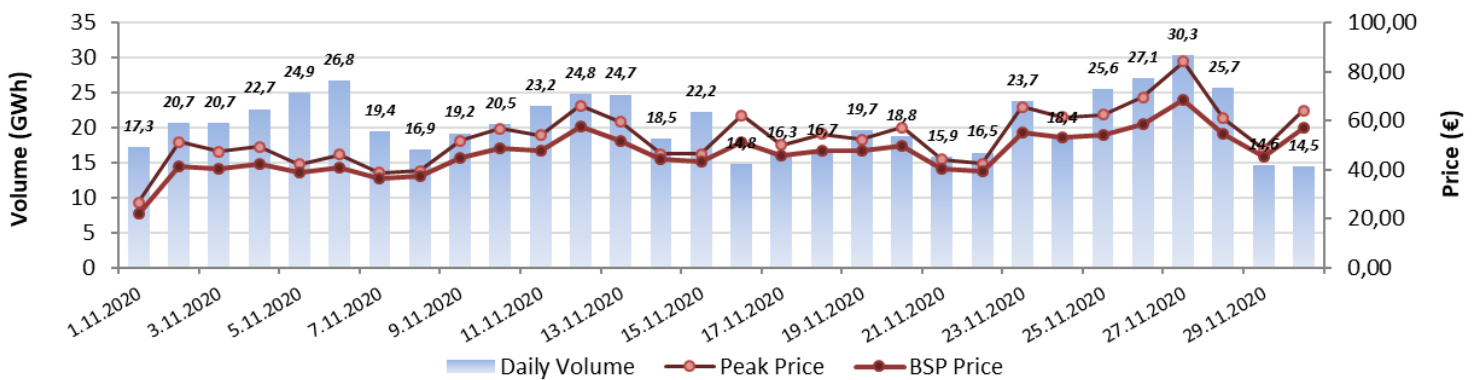
[Further Day-Ahead Auction Info.](#) (BSP website)

Intraday		
	Volume (MWh)	Avg. Price (€/MWh)
MI2	26.922 ▼ 19,1%	63,47 ▲ 66,0%
MI6	8.795 ▲ 25,8%	56,79 ▲ 34,1%
Continuous	85.751 ▼ 19,7%	

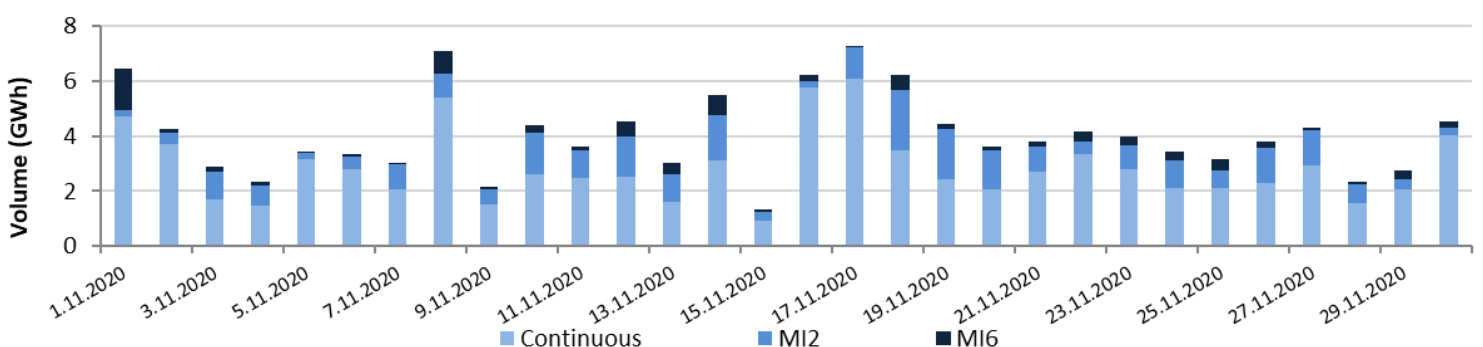
[Further Intraday Trading info.](#) (BSP website)



Day-Ahead Volumes and Prices



Intraday Daily Volumes



Day-Ahead Auction

Average Hourly Volumes and Prices

Hour (AM)	1	2	3	4	5	6	7	8	9	10	11	12
Volume (MWh)	805	769	758	739	730	803	847	846	884	893	882	922
Base price (€/MWh)	36,96	34,94	34,08	33,13	33,93	37,06	45,25	50,93	54,35	52,18	49,60	49,76
Hour (PM)	13	14	15	16	17	18	19	20	21	22	23	24
Volume (MWh)	954	923	886	893	969	941	885	899	890	919	899	763
Base price (€/MWh)	48,50	46,38	48,32	53,06	56,49	64,79	60,87	56,64	50,47	46,04	43,53	38,59

Cross-Zonal Capacities

	SI→IT	IT→SI	SI→AT	AT→SI	SI→HR	HR→SI	Total
Offered (MWh)	474.091	481.600	680.200	352.050	703.231	1.456.769	4.147.941
Allocated (MWh)	142.741	110.120	11.976	271.303	216.486	79.529	832.155
% Allocated	30,11%	22,87%	1,76%	77,06%	30,78%	5,46%	

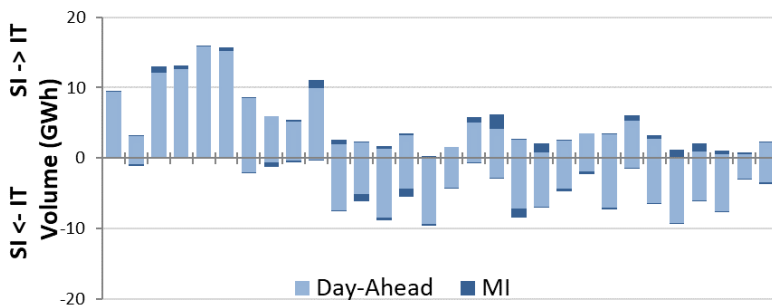
Daily Volatility of Base Price



[Methodology used for calculation of volatility.](#)

MI2 & MI6 Implicit Auctions

Allocated CZC Values on Slovenian-Italian Border



Cross-Zonal-Capacities

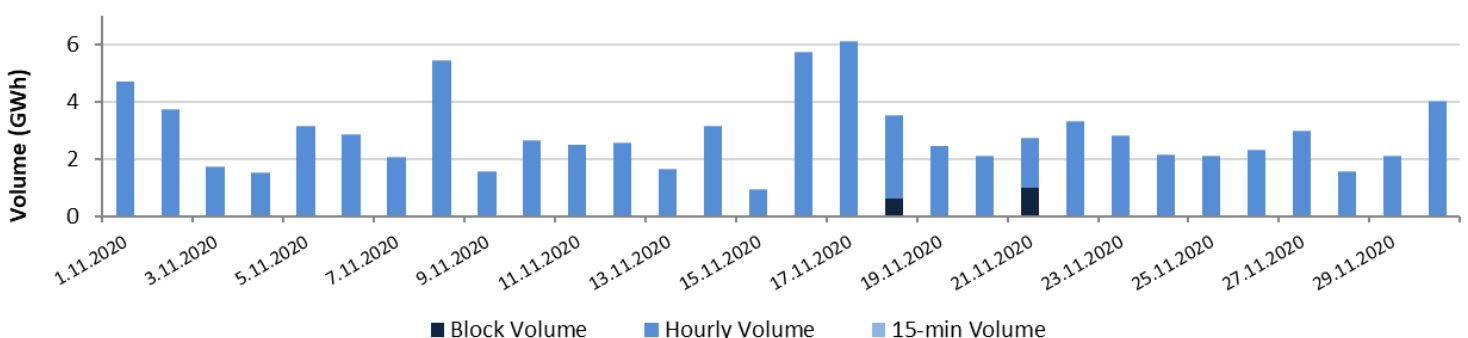
	SI-IT	IT-SI	Total
Offered (MWh)	360.522	159.198	519.720
Allocated (MWh)	13.647	7.965	21.611
% Allocated	3,79%	5,00%	/



Read more about European Pilot Project
[Implicit Intraday Auctions \(MI2 & MI6\)](#)

Intraday Continuous Trading

Volumes by Products



For informational purposes only.

Past 12 Months Trade Information

Day-Ahead Auction

Avg. Monthly Volume (MWh)	638.851
Avg. Daily Volume (MWh)	20.946
Avg. Base Price (€/MWh)	36,87
Avg. Euro-Peak Price (€/MWh)	40,66
Avg. SI-IT offered (MWh)/Avg. % Allocated	371.364 / 40,4%
Avg. IT-SI offered (MWh)/Avg.% Allocated	470.388 / 24,6%
Avg. SI-AT offered (MWh)/Avg. % Allocated	775.664 / 5,5%
Avg. AT-SI offered (MWh)/Avg. % Allocated	477.444 / 59,2%
Avg. SI-HR offered (MWh)/Avg. % Allocated	713.393 / 27,4%
Avg. HR-SI offered (MWh)/Avg. % Allocated	1.479.838 / 6,0%

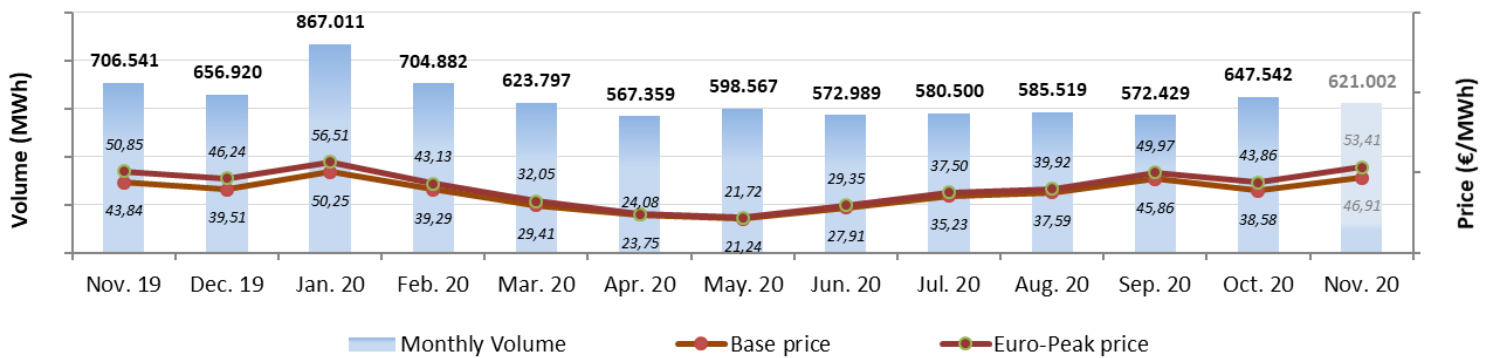
Intraday Continuous Trading

Avg. Monthly Volume (MWh)	81.315
Number of trades	13.975

MI2 & MI6 Implicit Auctions

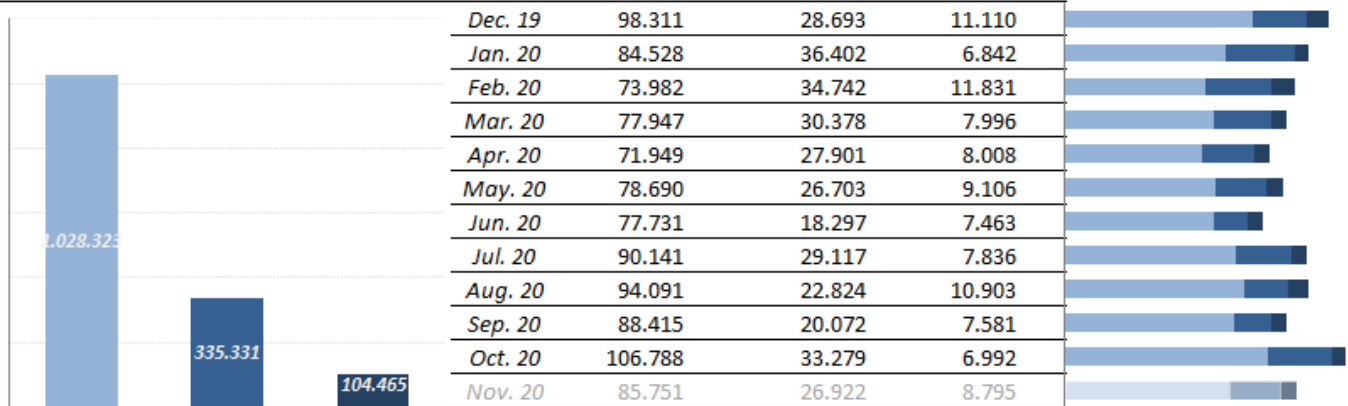
Avg. Monthly volume MI2 (MWh)	30.143
Avg. Monthly volume MI6 (MWh)	9.195
Avg. SI-IT offered (MWh)/Avg. % Allocated	306.663 / 3,7%
Avg. IT-SI offered (MWh)/Avg.% Allocated	281.971 / 4,1%

Day-Ahead Market Volumes and Prices

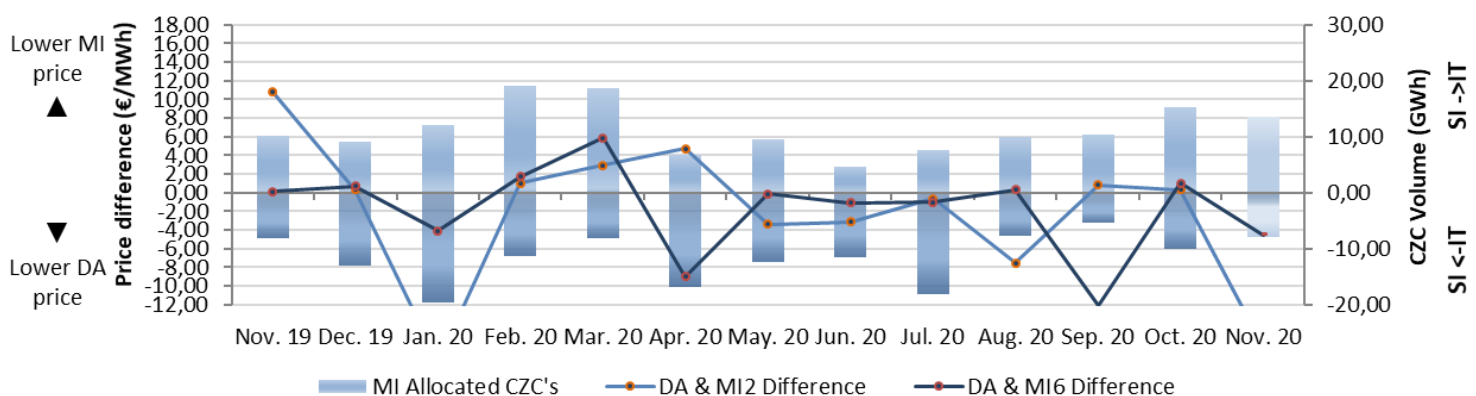


Intraday Volumes (MWh)

Total Volume in the past 12 months





Absolute Difference Between MI and Day-Ahead Prices & MI Offered Cross-Zonal Capacities




*Cross-Zonal Capacities not allocated on Day-Ahead Auction are later offered for MI2 and MI6 Auctions.

BSP Energy Exchange LL C
Dunajska 156
SI-1000 Ljubljana
Slovenija

 **+386 1 620 76 76**

 **+386 1 620 76 77**

 **www.bsp-southpool.com**

 **info@bsp-southpool.com**

