

- 🌐 Total trading volume in May reached 713 GWh
- 🌐 Intraday trading volume represents 16,1% in total trading volume
- 🌐 Average daily Base price at 21,24 €/MWh

May Overall

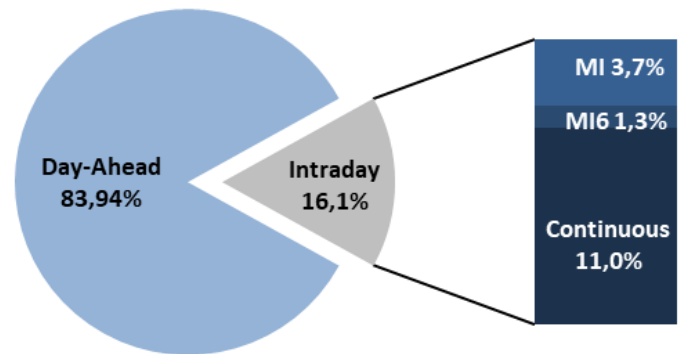
Day-Ahead

Volume (MWh)		Price (€/MWh)			
Total	598.567 ▲ 5,5%				
Avg. daily	19.309 ▲ 2,1%	Avg. Daily	Max. Daily	Min. Daily	Spec. Daily Volatility
Max. daily	27.892 ▲ 12,4%	Base	33,47	7,02	15,5%
Min. daily	13.358 ▼ 7,8%	Euro-Peak	37,42	5,21	21,6%

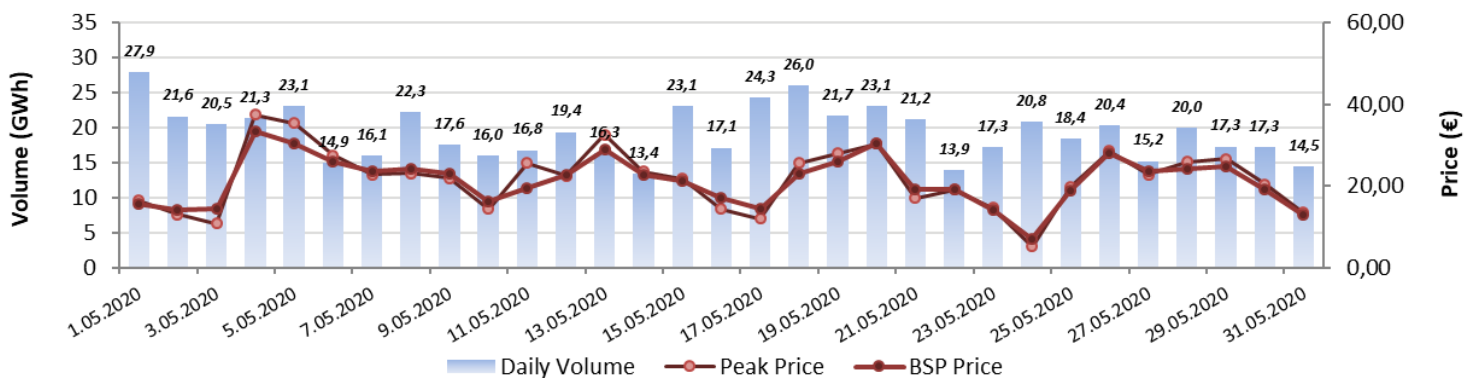
[Further Day-Ahead Auction Info.](#) (BSP website)

Intraday		
	Volume (MWh)	Avg. Price (€/MWh)
MI2	26.703 ▼ 4,3%	24,62 ▲ 29,2%
MI6	9.106 ▲ 13,7%	25,27 ▼ 33,4%
Continuous	78.690 ▲ 9,4%	

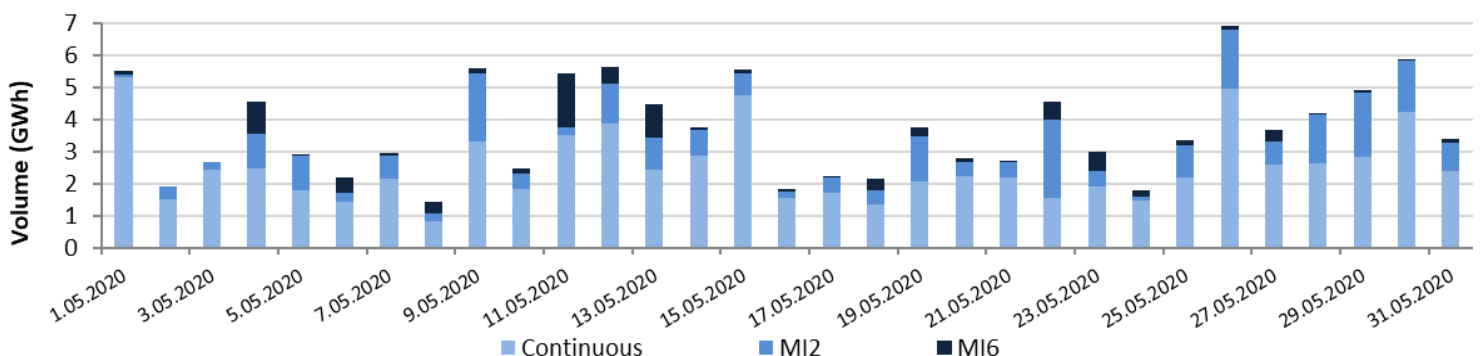
[Further Intraday Trading info.](#) (BSP website)



Day-Ahead Volumes and Prices



Intraday Daily Volumes



Day-Ahead Auction

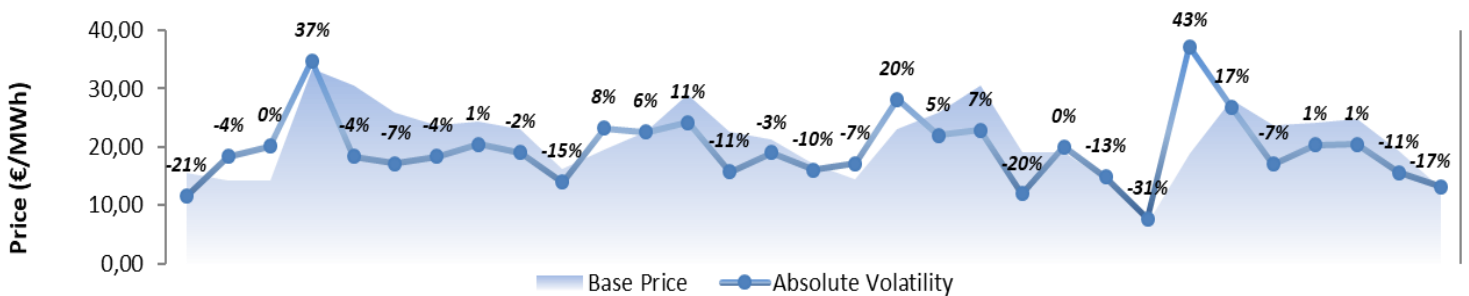
Average Hourly Volumes and Prices

Hour (AM)	1	2	3	4	5	6	7	8	9	10	11	12
Volume (MWh)	784	673	678	716	684	604	696	785	724	727	747	825
Base price (€/MWh)	19,35	17,30	15,98	15,31	14,84	15,02	20,18	24,21	24,86	22,46	21,26	21,70
Hour (PM)	13	14	15	16	17	18	19	20	21	22	23	24
Volume (MWh)	907	917	861	844	865	838	880	886	1039	954	930	746
Base price (€/MWh)	21,63	19,24	17,65	17,89	18,85	21,11	24,36	29,61	32,87	28,85	24,47	20,75

Cross-Zonal Capacities

	SI→IT	IT→SI	SI→AT	AT→SI	SI→HR	HR→SI	Total
Offered (MWh)	241.278	469.880	856.150	423.200	702.367	1.529.633	4.222.508
Allocated (MWh)	23.149	201.983	34.219	272.471	330.906	17.690	880.419
% Allocated	9,59%	42,99%	4,00%	64,38%	47,11%	1,16%	

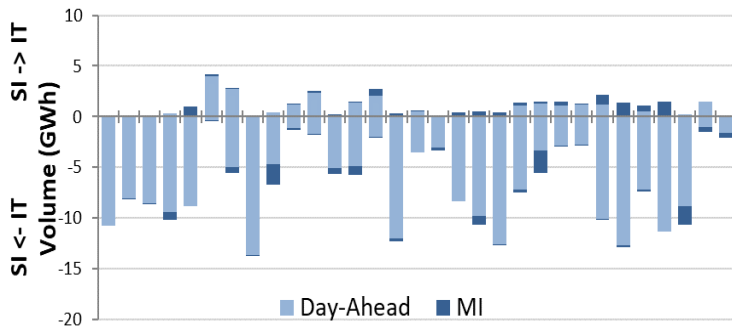
Daily Volatility of Base Price



[Methodology used for calculation of volatility.](#)

MI2 & MI6 Implicit Auctions

Allocated CZC Values on Slovenian-Italian Border



Cross-Zonal-Capacities

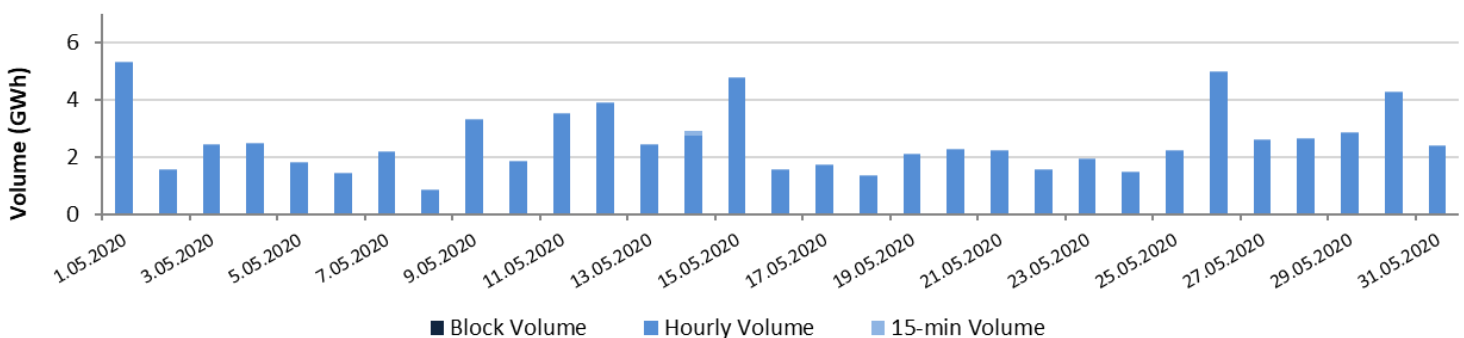
	SI-IT	IT-SI	Total
Offered (MWh)	371.892	273.535	645.427
Allocated (MWh)	9.588	12.384	21.972
% Allocated	2,58%	4,53%	/



Read more about European Pilot Project [Implicit Intraday Auctions \(MI2 & MI6\)](#)

Intraday Continuous Trading

Volumes by Products



For informational purposes only.

Past 12 Months Trade Information

Day-Ahead Auction

Avg. Monthly Volume (MWh)	690.711
Avg. Daily Volume (MWh)	22.646
Avg. Base Price (€/MWh)	41,92
Avg. Euro-Peak Price (€/MWh)	46,28
Avg. SI-IT offered (MWh)/Avg. % Allocated	367.506 / 35,9%
Avg. IT-SI offered (MWh)/Avg.% Allocated	464.535 / 30,7%
Avg. SI-AT offered (MWh)/Avg. % Allocated	817.880 / 3,0%
Avg. AT-SI offered (MWh)/Avg. % Allocated	478.050 / 72,1%
Avg. SI-HR offered (MWh)/Avg. % Allocated	785.653 / 30,0%
Avg. HR-SI offered (MWh)/Avg. % Allocated	1.401.854 / 5,3%

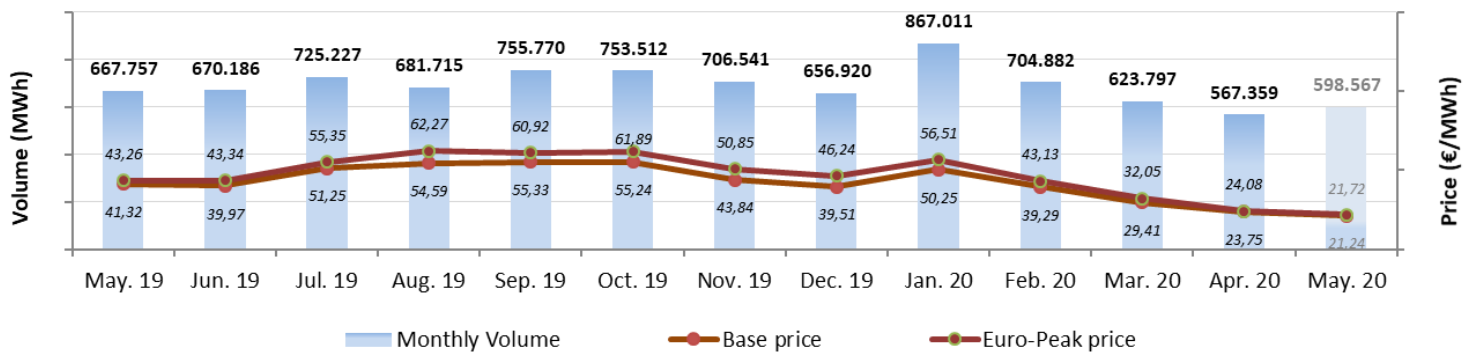
Intraday Continuous Trading

Avg. Monthly Volume (MWh)	44.463
Number of trades	13.975

MI2 & MI6 Implicit Auctions

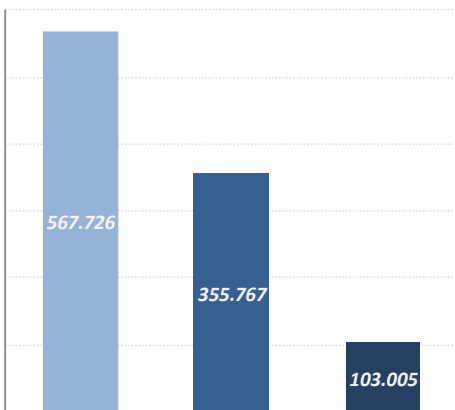
Avg. Monthly volume MI2 (MWh)	31.056
Avg. Monthly volume MI6 (MWh)	8.976
Avg. SI-IT offered (MWh)/Avg. % Allocated	361.054 / 3,5%
Avg. IT-SI offered (MWh)/Avg.% Allocated	258.816 / 4,4%

Day-Ahead Market Volumes and Prices



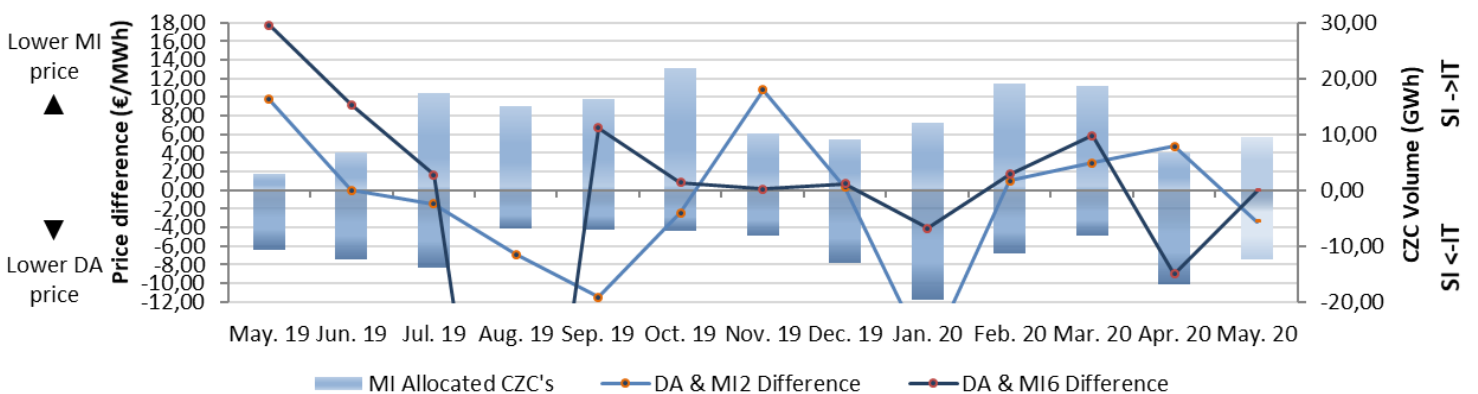
Intraday Volumes (MWh)

Total Volume in the past 12 months




	Continuous	MI2	MI6
Jun. 19	9.999	23.118	11.256
Jul. 19	9.834	34.572	11.544
Aug. 19	13.075	26.922	5.042
Sep. 19	12.887	27.784	5.345
Oct. 19	7.756	32.170	9.045
Nov. 19	28.771	26.380	5.879
Dec. 19	98.311	28.693	11.110
Jan. 20	84.528	36.402	6.842
Feb. 20	73.982	34.742	11.831
Mar. 20	77.947	30.378	7.996
Apr. 20	71.949	27.901	8.008
May. 20	78.690	26.703	9.106


Absolute Difference Between MI and Day-Ahead Prices & MI Offered Cross-Zonal Capacities




*Cross-Zonal Capacities not allocated on Day-Ahead Auction are later offered for MI2 and MI6 Auctions.

BSP Energy Exchange LL C
Dunajska 156
SI-1000 Ljubljana
Slovenija

 **+386 1 620 76 76**

 **+386 1 620 76 77**

 **www.bsp-southpool.com**

 **info@bsp-southpool.com**

