



	6,350 (-200)	10,985 (+580)	665 (-15)	6,800 (-115)
9	7,654 (+169)	6,522 (+122)	1,632 (-54)	3,652 (+182)
0	7,150 (-150)	782 (+74)	1,901 (+101)	3,280 (-120)
	2,022 (-18)	631 (+40)	6,287 (-57)	12,630 (+330)

MONTHLY REPORT

September 2024

September 2024 Overall

BSP

Day-Ahead

Volume (MWh)		
Total	991.565	↓ 13,9%
Avg. daily	33.052	↓ 11,1%
Max. daily	38.492	↓ 10,8%
Min. daily	25.732	↓ 16,5%

Price (€/MWh)					
	Avg. Daily		Max. Daily	Min. Daily	Spec. Daily Volatility
Base	94,63	↓ 14,7%	232,77	33,17	10,00%
Euro-Peak	96,21	↓ 5,4%	304,99	31,65	15,51%

Day-Ahead
991.565 GWh
(-13,9% MoM)

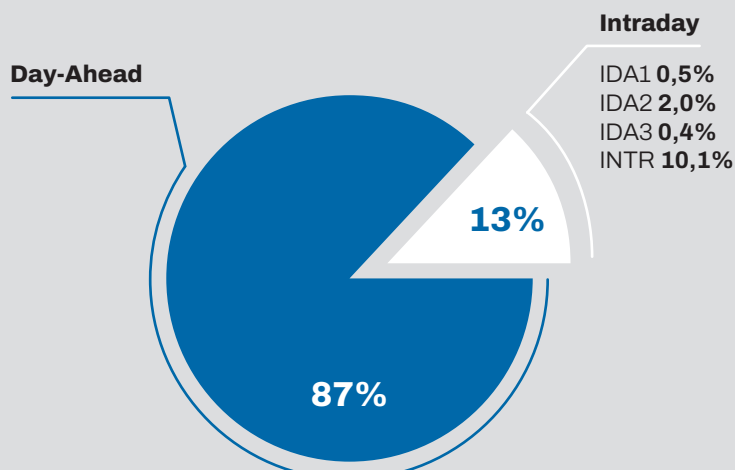
Base Avg.
94,63 €/MWh
(-14,7% MoM)

Intraday
146.820 GWh
(+24,5% MoM)

Intraday

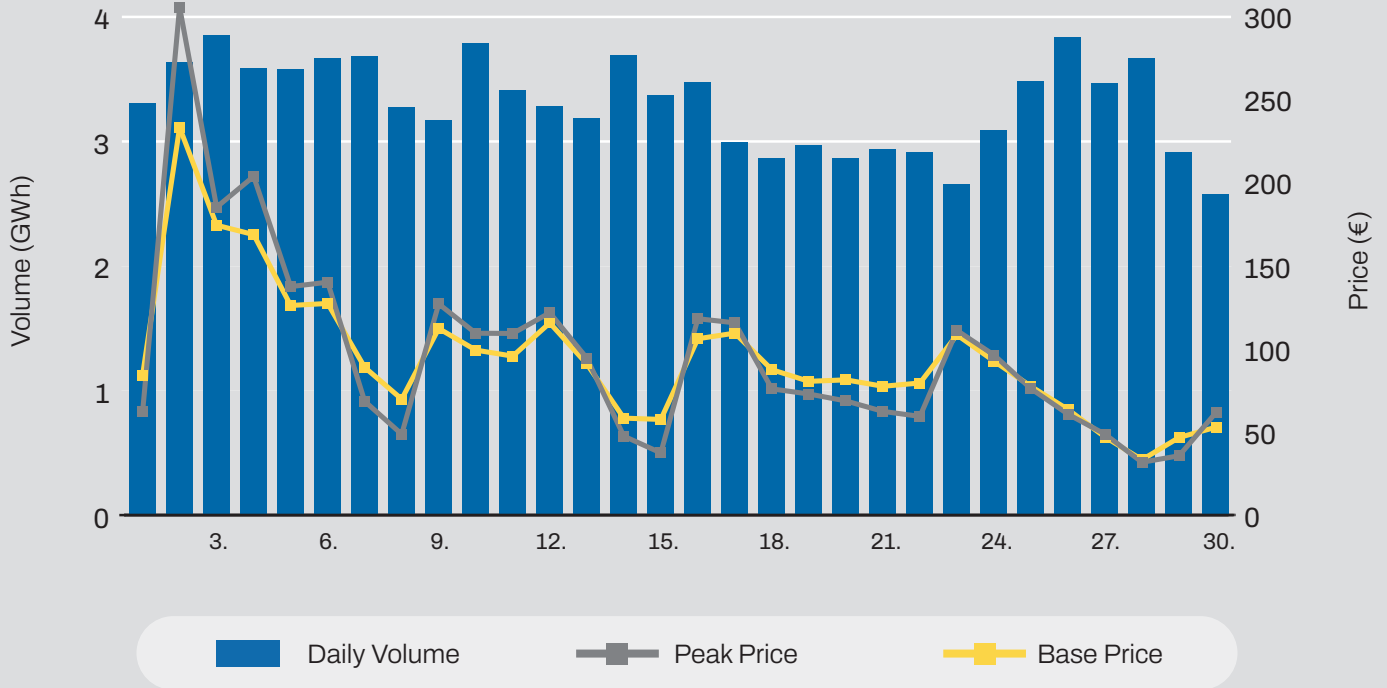
Volume (MWh)			Price (€/MWh)		
INTR	114.392,08	↑ 29,7%	INTR WAP	85,44	↓ 33,5%
IDA1	5.830	↑ 67,4%			
IDA2	22.831	↓ 7,1%	INTR Max	1.156,00	↓ 17,4%
IDA3	3.767	↑ 119,5%	INTR Min	-400,00	↓ 33,3%

Daily Average
33.052 GWh
(-11,1% MoM)



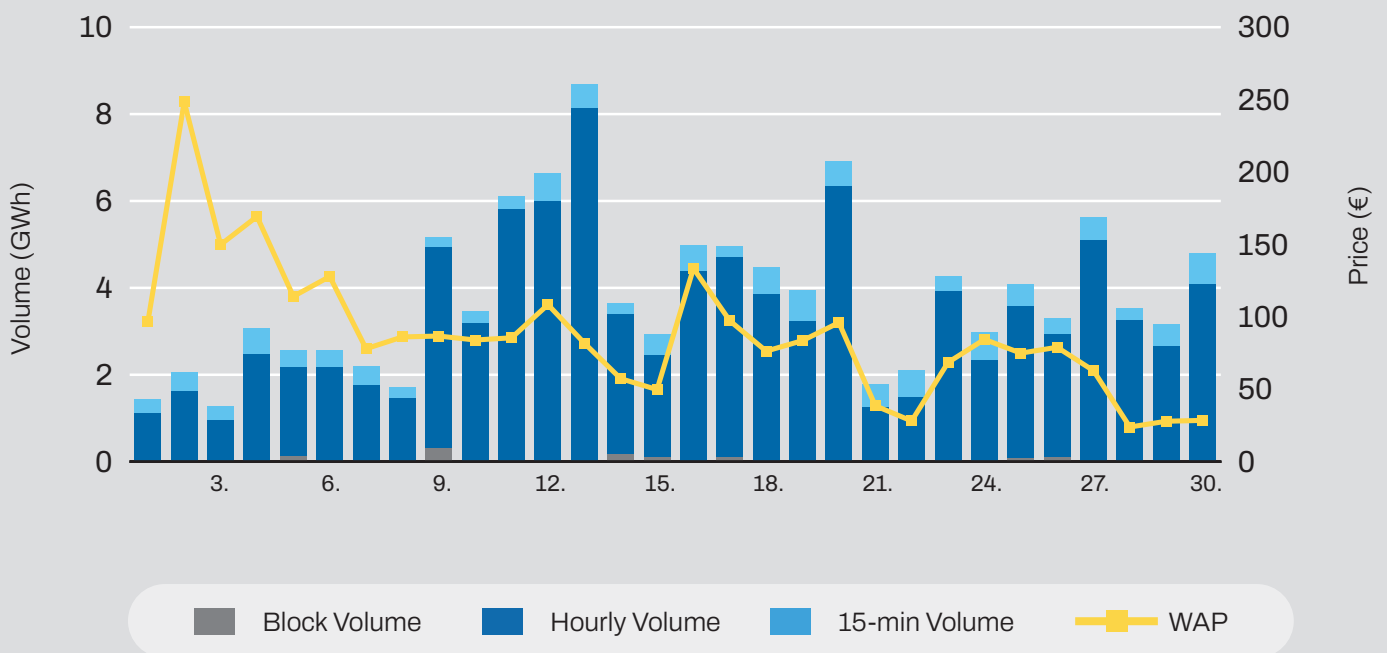
Daily Record
38.492 GWh
(-10,8% MoM)

Day-Ahead Volumes and Prices



Intraday Continuous Trading

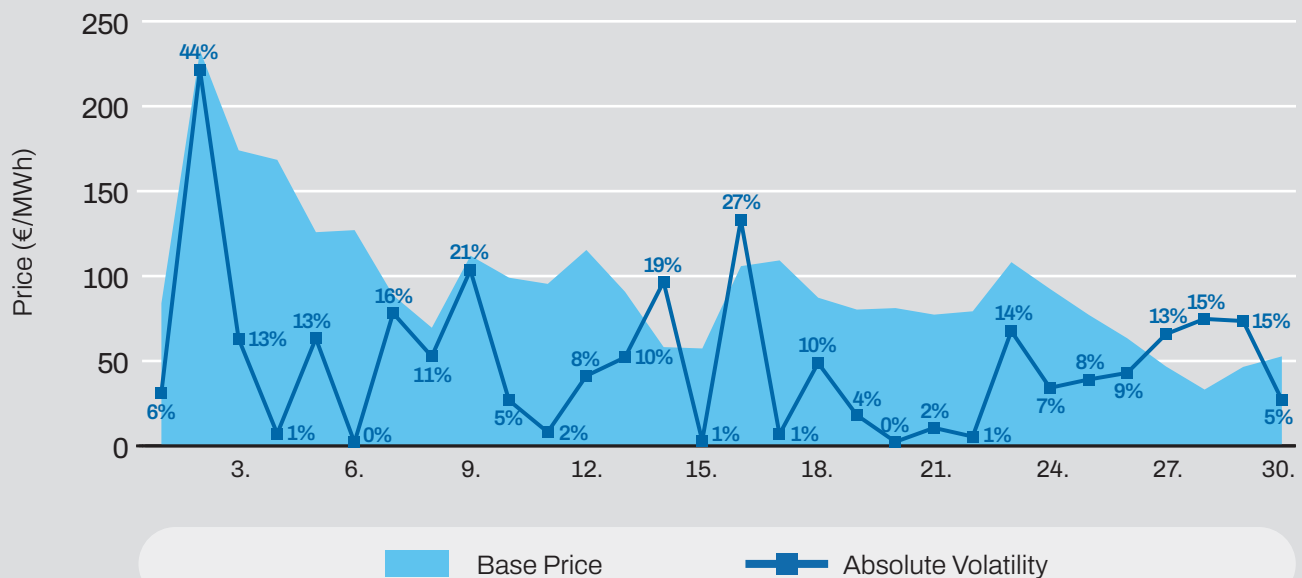
Volumes by Products



Average Monthly Day-Ahead Auction

Average Hourly Prices						Cross-Zonal Capacities	
Hour	Volume (MWh)	Average price (€/MWh)	Hour	Volume (MWh)	Average price (€/MWh)	Export/Import	Allocated (MWh)
1	1.252	77,01	13	1.312	43,49	SI → IT	237.980
2	1.176	70,87	14	1.368	41,21	IT → SI	76.358
3	1.127	68,31	15	1.351	47,12	SI → AT	5.002
4	1.137	66,53	16	1.308	61,30	AT → SI	570.081
5	1.133	69,46	17	1.498	91,22	SI → HU	145.189
6	1.215	78,53	18	1.609	125,25	HU → SI	95.433
7	1.354	101,95	19	1.754	181,45	SI → HR	374.177
8	1.392	121,77	20	1.920	257,77	HR → SI	2.317
9	1.257	108,09	21	1.822	163,55	Total	1.506.536
10	1.148	84,26	22	1.632	117,78		
11	1.157	62,15	23	1.546	97,30		
12	1.265	51,18	24	1.322	83,66		

Daily Volatility of Base Price



Comparison

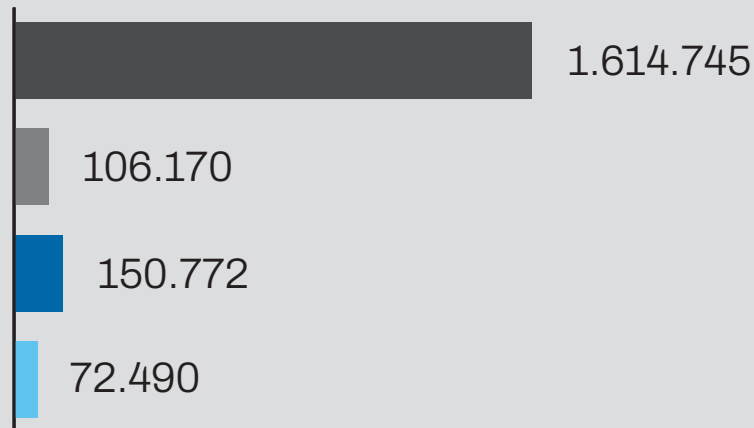
Day-Ahead Auction			
	September 2024	August 2024	September 2023
Avg. Daily Volume (MWh)	33.052	37.166	24.788
Avg. Hourly Volume (MWh)	1.377	1.549	1.033
Avg. Base Price (€/MWh)	94,60	110,89	102,56
Avg. Euro-Peak Price (€/MWh)	96,21	101,7	100,85

Day-Ahead Market Volumes and Prices



Past 12 Months Trade Information

Total Intraday Volumes (MWh)



Total Volume from Oct 2023

	Continuous	MI1	MI2	MI3
Oct	112.298	10.930	9.677	13.897
Nov	131.995	11.288	8.949	8.951
Dec	114.685	8.884	3.729	2.710
Jan	157.069	9.075	8.822	4.719
Feb	165.546	7.245	5.793	4.820
Mar	173.791	6.993	4.122	8.938
Apr	170.675	9.681	5.547	7.689
May	153.122	12.571	7.389	6.536
Jun	133.400	14.038	22.656	5.756
Jul	99.603	6.152	26.684	2.991
Aug	88.171	3.483	24.570	1.716
Sep	114.392	5.830	22.831	3.767

Continuous

MI1

MI2

MI3

September 2024 Overall

Seepex

Day-Ahead
507.761 GWh
(-4,2% MoM)

Base Avg.
107,07 €/MWh
(-15,8% MoM)

Daily
Average
16.925 GWh
(-1% MoM)

Daily
Record
20.177 GWh
(+2,9% MoM)

Day-Ahead

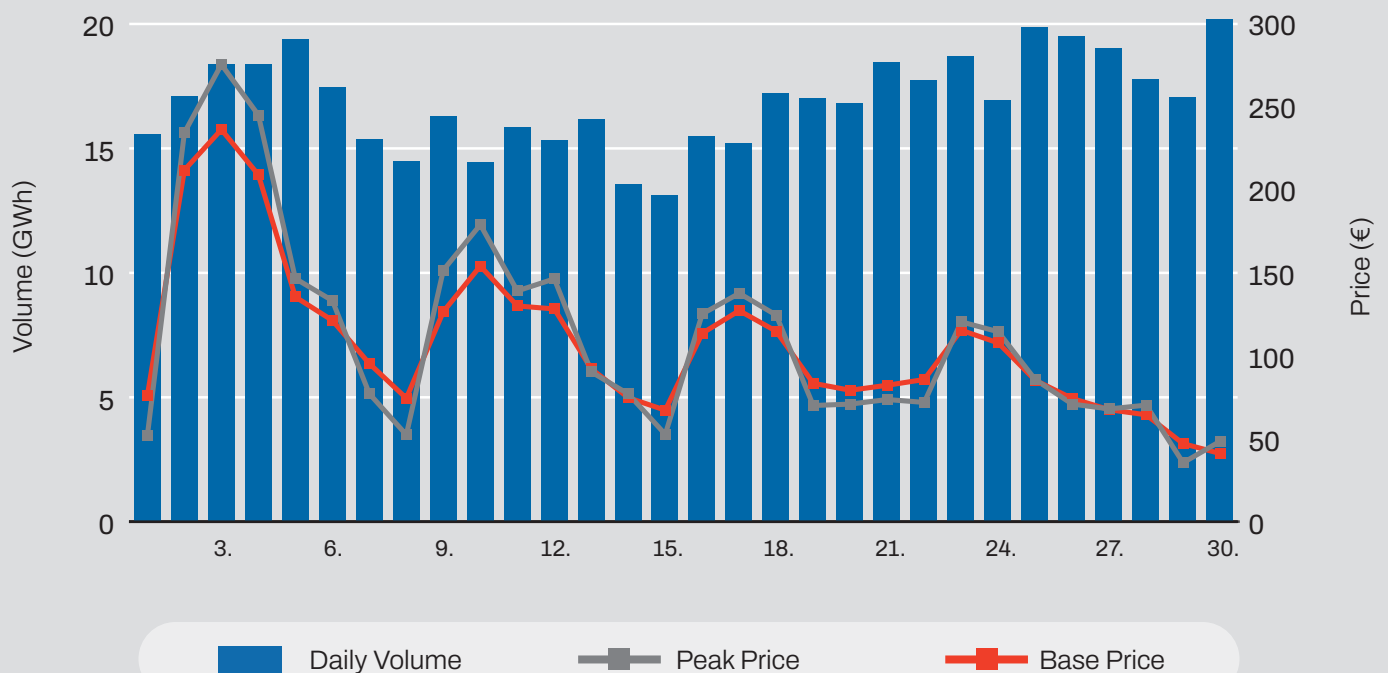
Volume (MWh)

Total	507.761	↓ 4,2%
Avg. daily	16.925	↓ 1,0%
Max. daily	20.177	↑ 2,9%
Min. daily	13.124	↓ 11,2%

Price (€/MWh)

	Avg. Daily	Max. Daily	Min. Daily	Spec. Daily Volatility
Base	107,07 ↓ 15,8%	235,67	40,95	9,63%
Euro-Peak	111,01 ↓ 8,0%	274,79	35,41	14,78%

Day-Ahead Volumes and Prices

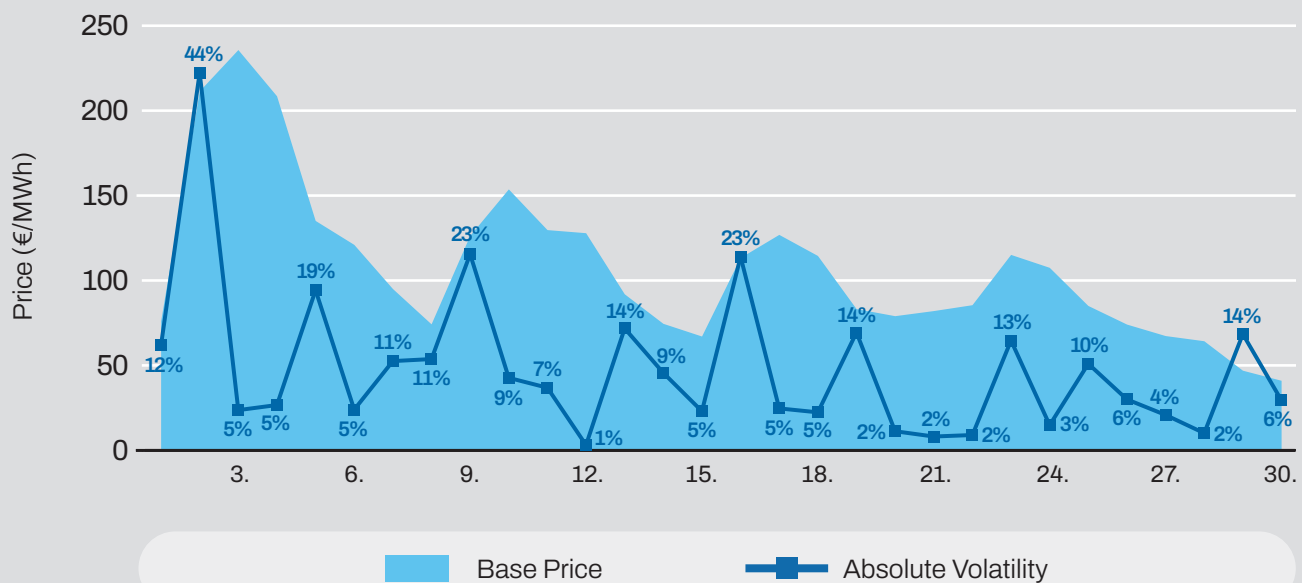


Day-Ahead Auction

Average Hourly Prices

Hour	Average Volume (MWh)	Average price (€/MWh)	Hour	Average Volume (MWh)	Average price (€/MWh)
1	576	81,81	13	914	50,60
2	592	74,81	14	926	49,29
3	600	70,38	15	909	53,66
4	614	69,18	16	839	71,95
5	623	71,16	17	726	103,75
6	604	82,42	18	661	149,12
7	589	106,89	19	696	222,85
8	614	125,12	20	712	315,90
9	665	108,98	21	678	213,49
10	791	84,94	22	640	138,27
11	850	64,97	23	620	110,44
12	898	56,06	24	590	93,76

Daily Volatility of Base Price



Intraday trading on SEEPEX started on **25th July 2023**
 Number of participants: **20**



U	1.822	20.349.000
K	3.680	233.681.000
PL	1.062	55.678.000
E	485	8.369.000
AH	8.569	159.301.000
PP	6.602	102.698.000
K	890	24.697.000
G	6.280	76.002.000
ID	2.436	57.610.000



1.822 (-35)	20.369 (+580)	890 (-20)
3.605 (+210)	9.542 (-128)	2.600 (+35)
3.204 (-33)	5.211 (+156)	7.100 (-60)
3.110 (-20)	712 (+12)	134 (+5)



ADEX GROUP holding company Ltd.

Dunajska cesta 156,
1000 Ljubljana, Slovenia

T SI +386 1 /620 76 76
T RS +381 11 715 28 43
E info@adex-spot.com