



	6,350 (-200)	10,985 (+580)	665 (-15)	6,800 (-115)
9	7,654 (+169)	6,522 (+122)	1,632 (-54)	3,652 (+182)
0	7,150 (-150)	782 (+74)	1,901 (+101)	3,280 (-120)
	2,022 (-18)	631 (+40)	6,287 (-57)	12,630 (+330)

MONTHLY REPORT

**July 2024**

# July 2024 Overall

BSP SouthPool

## Day-Ahead

Volume (MWh)		
Total	1.244.598	↑5,2%
Avg. daily	40.148	↑1,8%
Max. daily	45.856	↓6,6%
Min. daily	22.569	↓9,2%

Price (€/MWh)					
	Avg. Daily		Max. Daily	Min. Daily	Spec. Daily Volatility
Base	88,26	↓4,8%	132,62	17,41	14,94%
Euro-Peak	75,28	↑0,5%	128,60	-8,60	26,71%

Day-Ahead  
**1.244.598 GWh**  
(+5,2% MoM)

Base Avg.  
**88,26 €/MWh**  
(-4,8% MoM)

Intraday  
**135.431 GWh**  
(-23,0% MoM)

Daily Average  
**40.148 GWh**  
(+1,8% MoM)

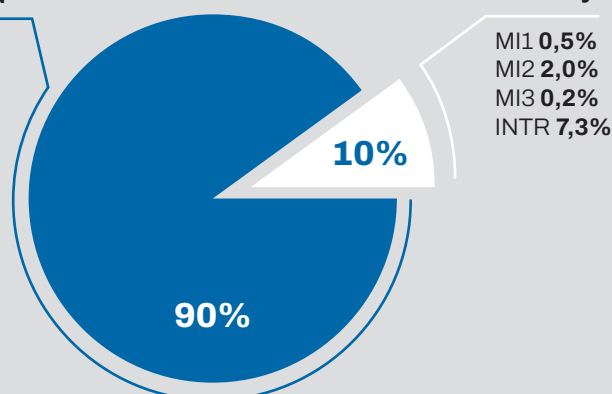
Daily Record  
**45.856 GWh**  
(-6,6% MoM)

## Intraday

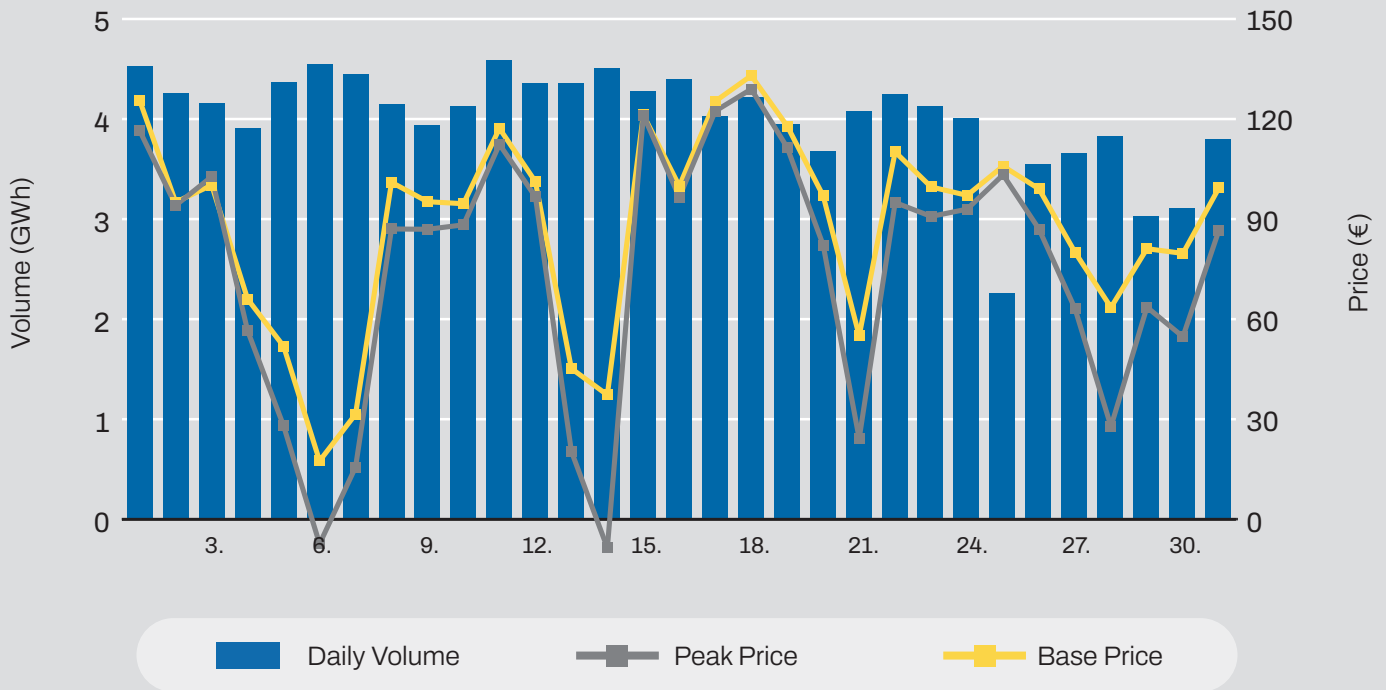
Volume (MWh)		
MI1	6.152	↓56,2%
MI2	26.684	↑17,8%
MI3	2.991	↓48,0%
INTR	99.603	↓25,3%

Day-Ahead

Intraday

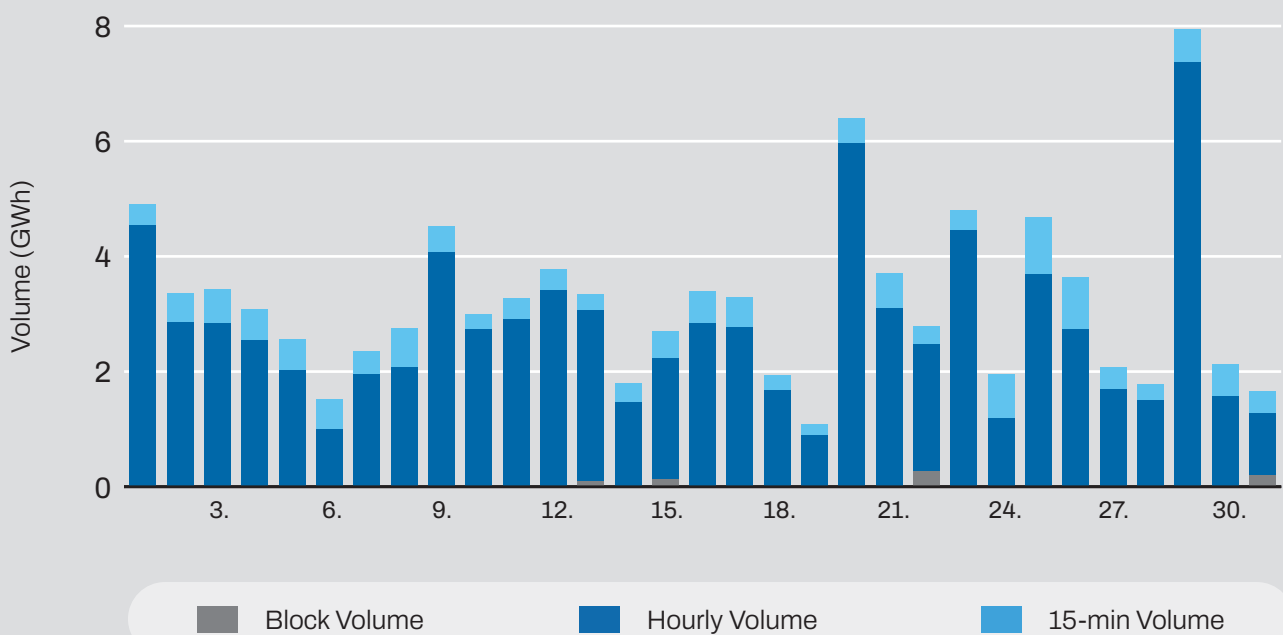


## Day-Ahead Volumes and Prices



## Intraday Continuous Trading

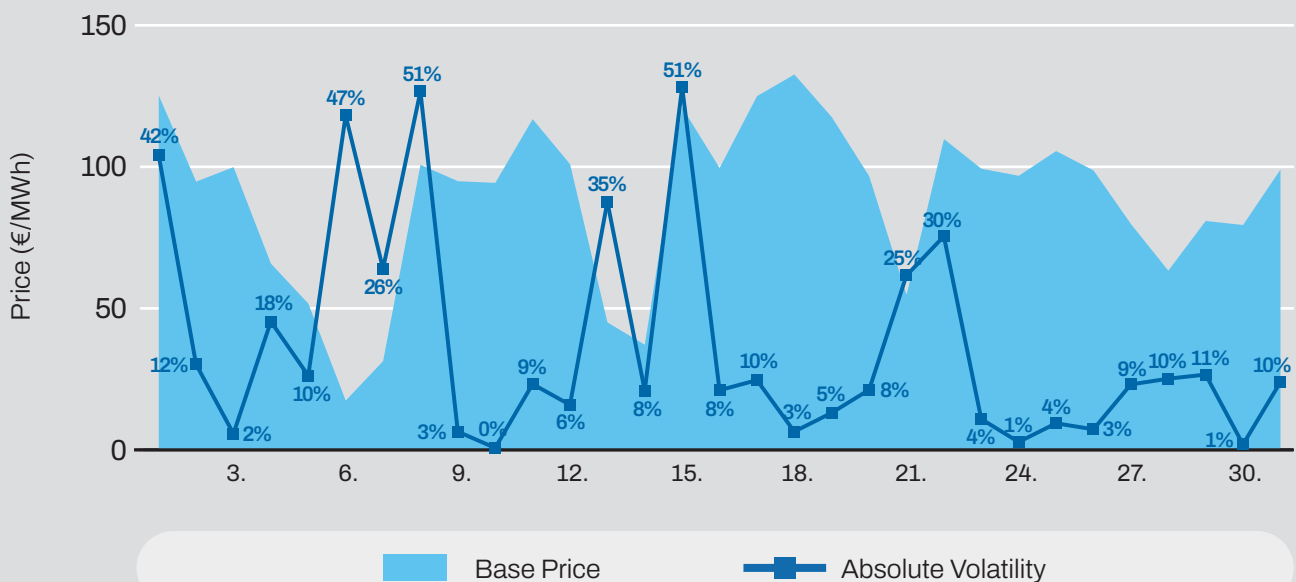
### Volumes by Products



## Average Monthly Day-Ahead Auction

Average Hourly Prices						Cross-Zonal Capacities	
Hour	Volume (MWh)	Average price (€/MWh)	Hour	Volume (MWh)	Average price (€/MWh)	Export/Import	Allocated (MWh)
1	1.715	89,02	13	1.754	51,22	SI → IT	192.411
2	1.608	75,99	14	1.778	50,07	IT → SI	100.483
3	1.538	72,90	15	1.787	49,51	SI → AT	0
4	1.536	70,38	16	1.724	56,88	AT → SI	868.050
5	1.508	69,42	17	1.749	69,42	SI → HU	240.561
6	1.501	75,43	18	1.773	83,75	HU → SI	23.194
7	1.484	94,66	19	1.805	116,89	SI → HR	622.672
8	1.468	94,32	20	1.881	160,26	HR → SI	0
9	1.462	85,67	21	1.939	207,73	<b>Total</b>	<b>2.047.370</b>
10	1.499	68,02	22	1.934	152,55		
11	1.532	58,98	23	1.815	118,07		
12	1.645	52,73	24	1.712	94,38		

### Daily Volatility of Base Price



## Comparison

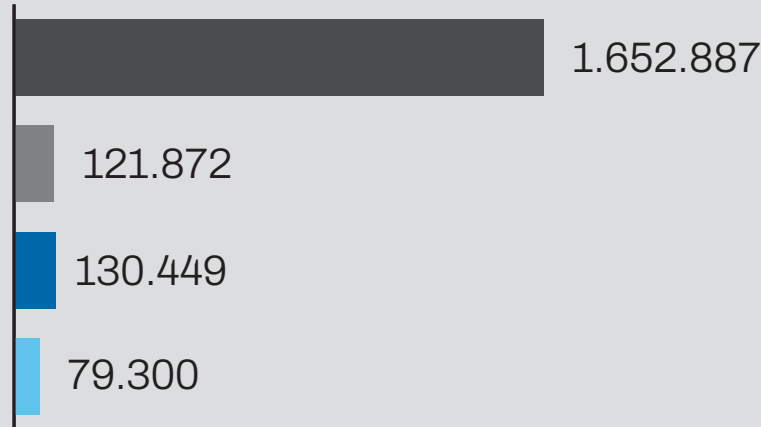
Day-Ahead Auction			
	July 2024	June 2024	July 2023
Avg. Daily Volume (MWh)	<b>40.148</b>	<b>39.424</b>	<b>25.221</b>
Avg. Hourly Volume (MWh)	<b>1.673</b>	<b>1.643</b>	<b>1.051</b>
Avg. Base Price (€/MWh)	<b>88,26</b>	<b>92,73</b>	<b>90,33</b>
Avg. Euro-Peak Price (€/MWh)	<b>75,28</b>	<b>74,89</b>	<b>82,45</b>

## Day-Ahead Market Volumes and Prices



## Past 12 Months Trade Information

### Total Intraday Volumes (MWH)



### Total Volume from Aug 2023

	Continuous	MI1	MI2	MI3
Aug	140.685	16.329	11.164	5.137
Sep	100.019	8.686	15.915	7.155
Oct	112.298	10.930	9.677	13.897
Nov	131.995	11.288	8.949	8.951
Dec	114.685	8.884	3.729	2.710
Jan	157.069	9.075	8.822	4.719
Feb	165.546	7.245	5.793	4.820
Mar	173.791	6.993	4.122	8.938
Apr	170.675	9.681	5.547	7.689
May	153.122	12.571	7.389	6.536
Jun	133.400	14.038	22.656	5.756
Jul	99.603	6.152	26.684	2.991

Continuous

MI1

MI2

MI3

# July 2024 Overall

Seepex

Day-Ahead  
**493.487 GWh**  
(+18,3% MoM)

Base Avg.  
**134,29 €/MWh**  
(+37,0% MoM)

Daily  
Average  
**15.919 GWh**  
(+14,5% MoM)

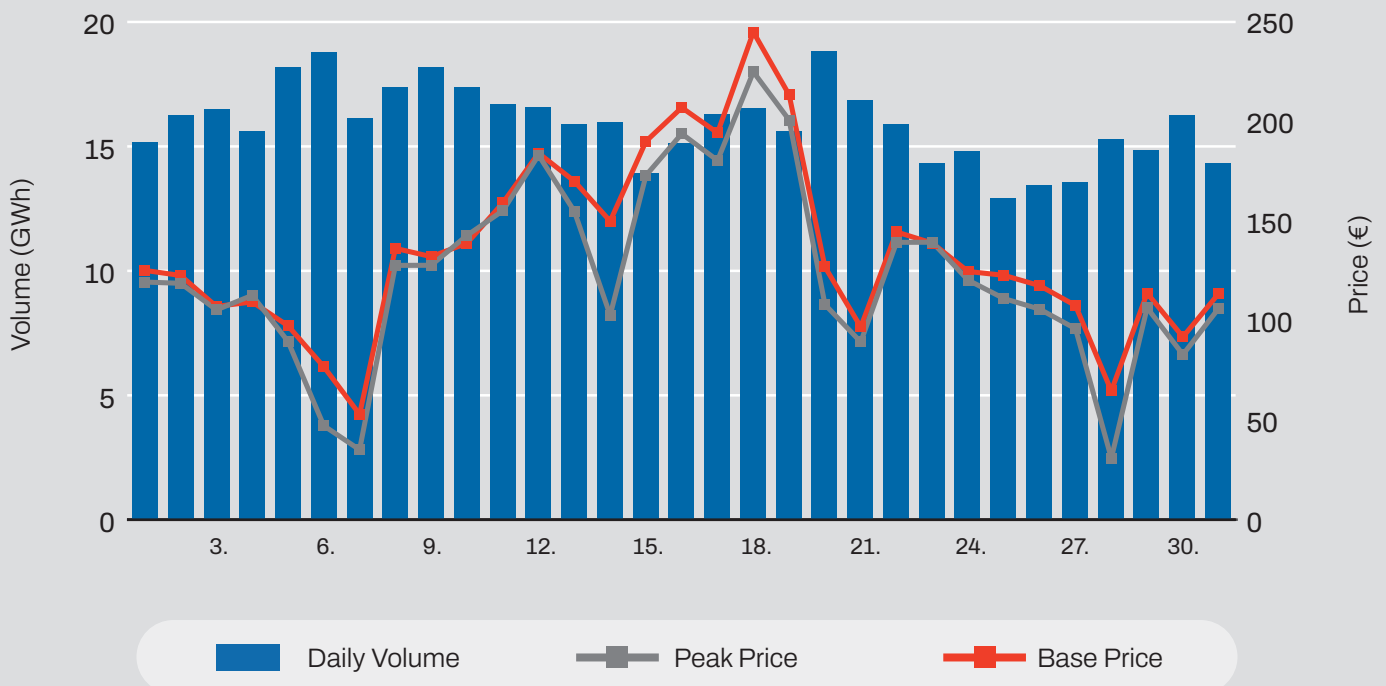
Daily  
Record  
**18.814 GWh**  
(+2,8% MoM)

## Day-Ahead

Volume (MWh)		
Total	<b>493.487</b>	<b>↑18,3%</b>
Avg. daily	<b>15.919</b>	<b>↑14,5%</b>
Max. daily	<b>18.814</b>	<b>↑2,8%</b>
Min. daily	<b>12.917</b>	<b>↑39,6%</b>

Price (€/MWh)				
	Avg. Daily	Max. Daily	Min. Daily	Spec. Daily Volatility
Base	<b>134,29</b> <b>↑37,0%</b>	<b>244,22</b>	<b>52,77</b>	<b>9,3%</b>
Euro-Peak	<b>123,2</b> <b>↑48,1%</b>	<b>224,28</b>	<b>30,73</b>	<b>14,4%</b>

## Day-Ahead Volumes and Prices



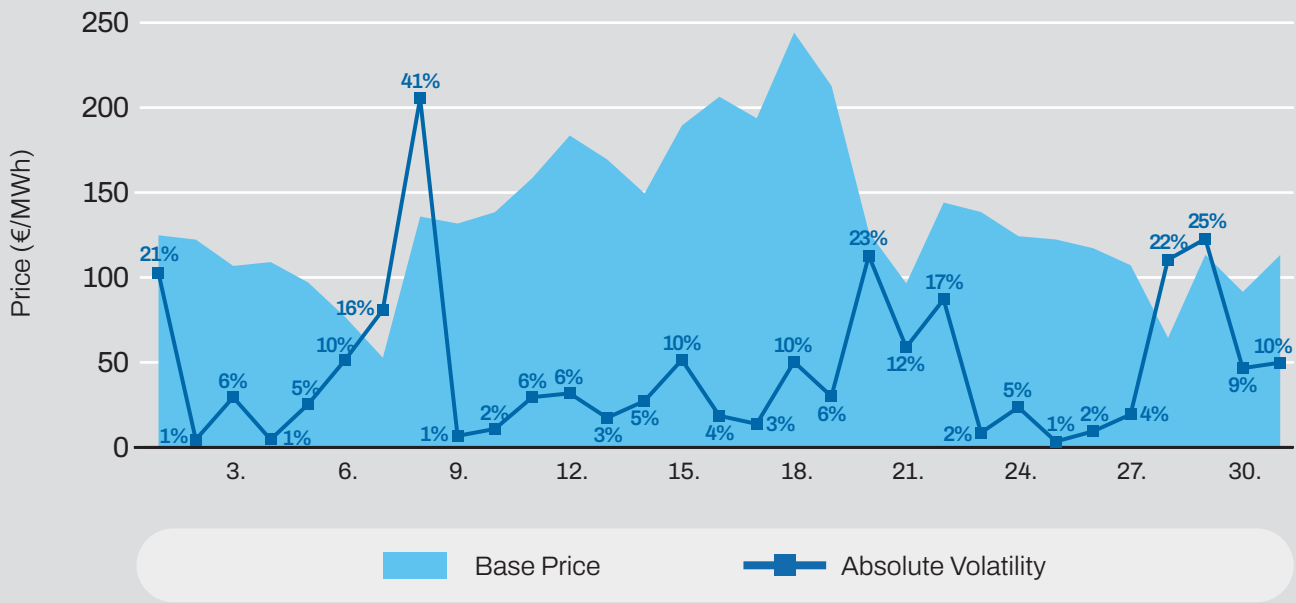


## Day-Ahead Auction

Average Hourly Prices

Hour	Average Volume (MWh)	Average price (€/MWh)	Hour	Average Volume (MWh)	Average price (€/MWh)
1	571	123,47	13	847	79,80
2	533	103,49	14	838	82,49
3	539	92,48	15	811	86,12
4	530	88,74	16	774	99,83
5	532	86,84	17	728	116,50
6	545	89,96	18	656	145,30
7	549	102,41	19	615	225,97
8	608	106,92	20	617	299,21
9	688	98,20	21	642	341,92
10	774	85,00	22	635	277,33
11	834	80,81	23	598	179,76
12	845	79,17	24	609	151,19

## Daily Volatility of Base Price

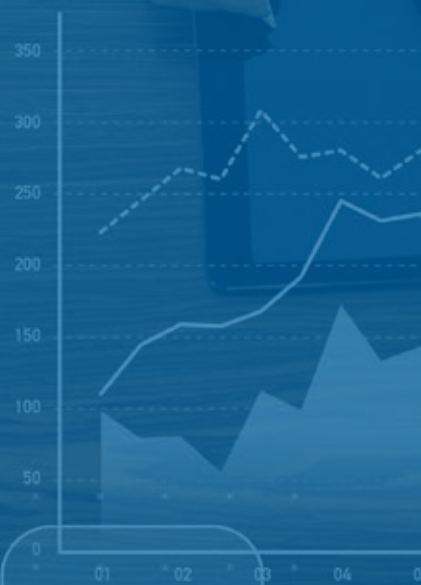


Intraday trading on SEEPEX started on **25th July 2023**  
 Number of participants: **20**





U	1,822	12,349,000
K	3,680	238,681,000
PL	1,062	65,678,000
EE	485	8,369,000
AH	8,569	189,301,000
OP	6,602	102,698,000
K	890	24,697,000
G	6,280	76,002,000
ID	2,436	57,610,000



1,822 (-35)	20,369 (+580)	890 (-20)
3,605 (+210)	9,542 (-128)	2,600 (+35)
3,204 (-33)	5,211 (+156)	7,100 (-60)
3,330 (-20)	712 (+12)	134 (+5)



**ADEX GROUP holding company Ltd.**

Dunajska cesta 156,  
1000 Ljubljana, Slovenia

**T SI** +386 1/620 76 76

**T RS** +381 11 715 28 43

**E** info@adex-spot.com